



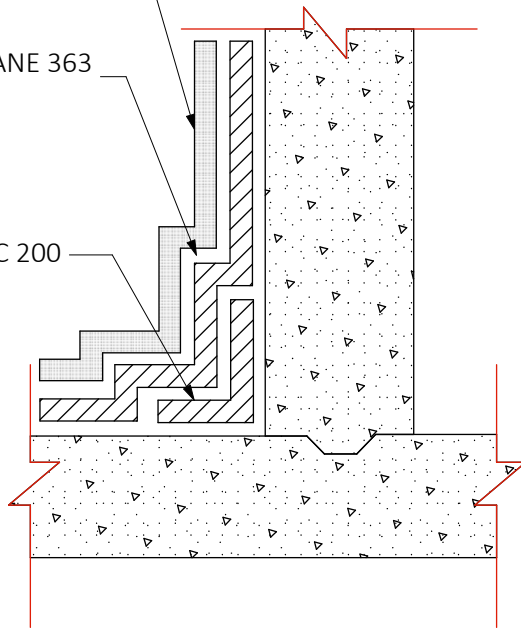
**WATERPROOFING &
BUILDING PRODUCTS**



IF SPECIFIED INSTALL
DRAINAGE / PROTECTION BOARD

ARMORMEMBRANE 363
@ 60 MILS WET

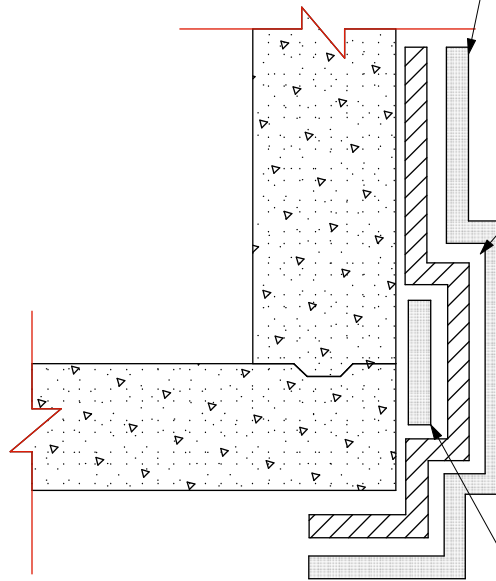
ARMORMASTIC 200



IF SPECIFIED INSTALL
DRAINAGE / PROTECTION BOARD

ARMORMEMBRANE 363
@ 60 MILS WET

ARMORMASTIC 200

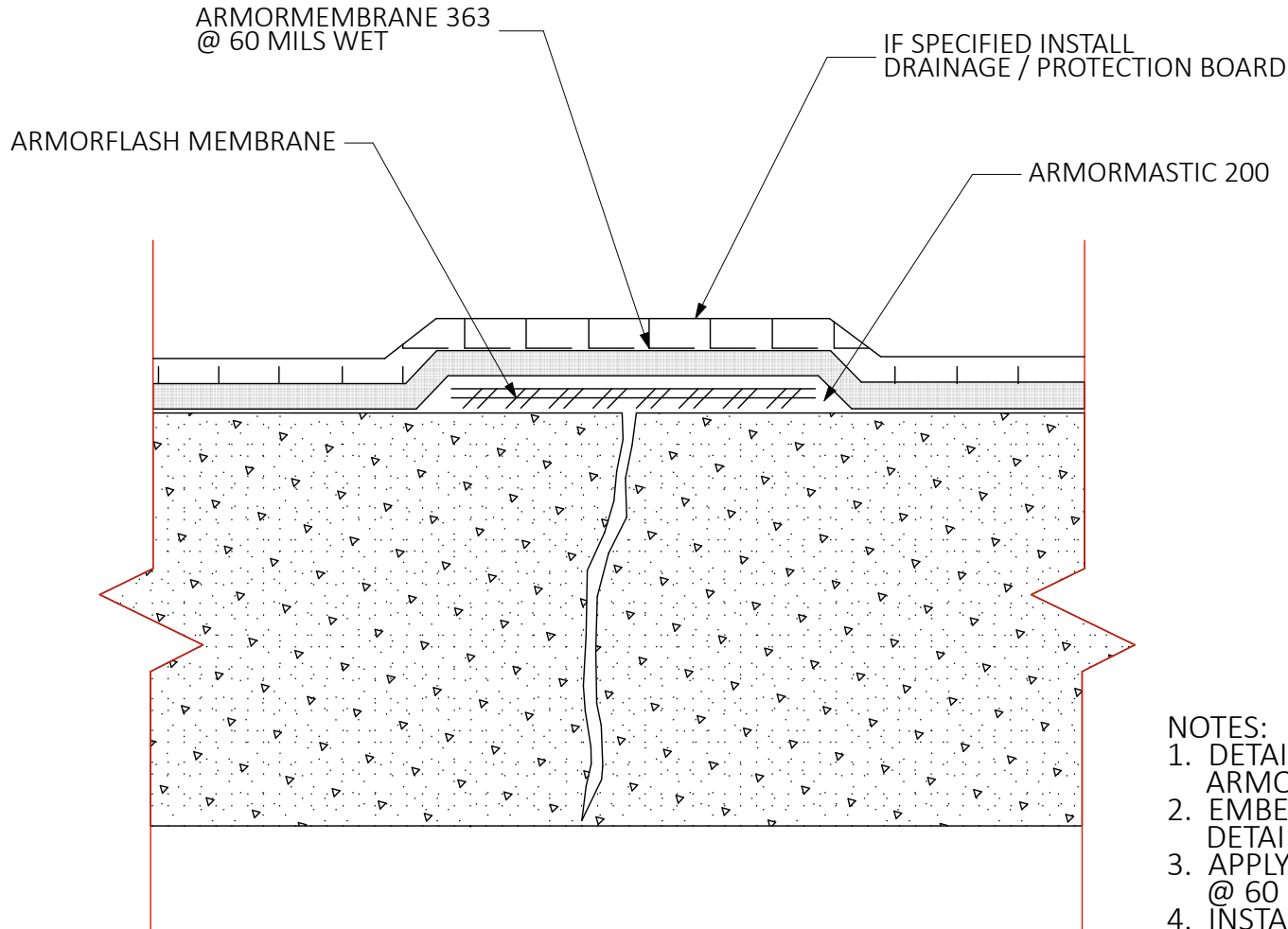


AM363 / ACCJ

INSIDE / OUTSIDE ANGLE CHANGES WITH CONSTRUCTION JOINT



**WATERPROOFING &
BUILDING PRODUCTS**



NOTES:

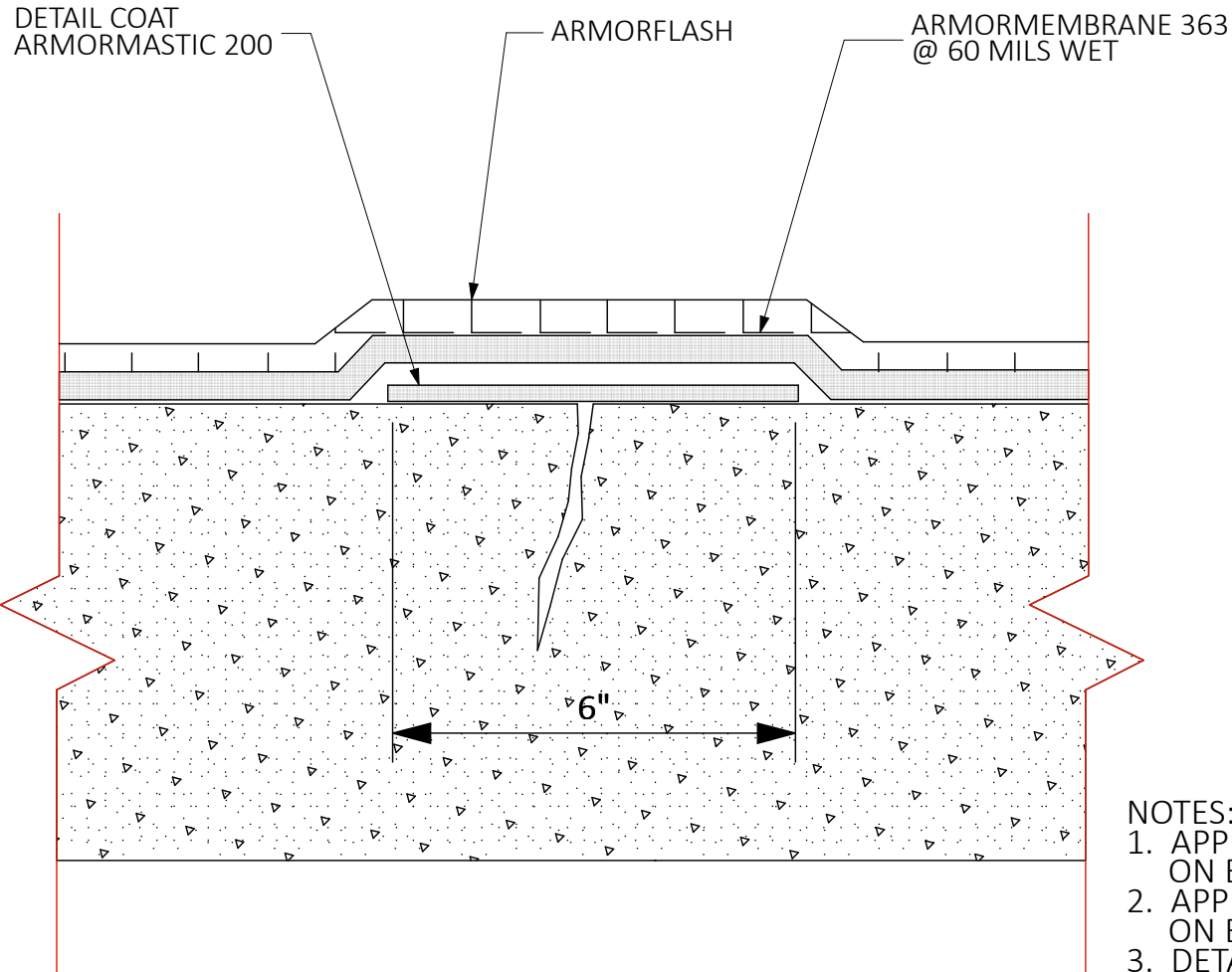
1. DETAIL JOINT OR CRACK WITH ARMORMASTIC
2. EMBED ARMORFLASH IN MASTIC
DETAIL SEAMS WITH MASTIC.
3. APPLY ARMORMEMBRANE 363 @ 60 MILS WET
4. INSTALL DRAINAGE / PROTECTION BOARD IF SPECIFIED

AM363 / CTG

**CRACK TREATMENT GREATER THAN 1/16"
CONSTRUCTION JOINTS OR MOVING CRACKS**



**WATERPROOFING &
BUILDING PRODUCTS**



NOTES:

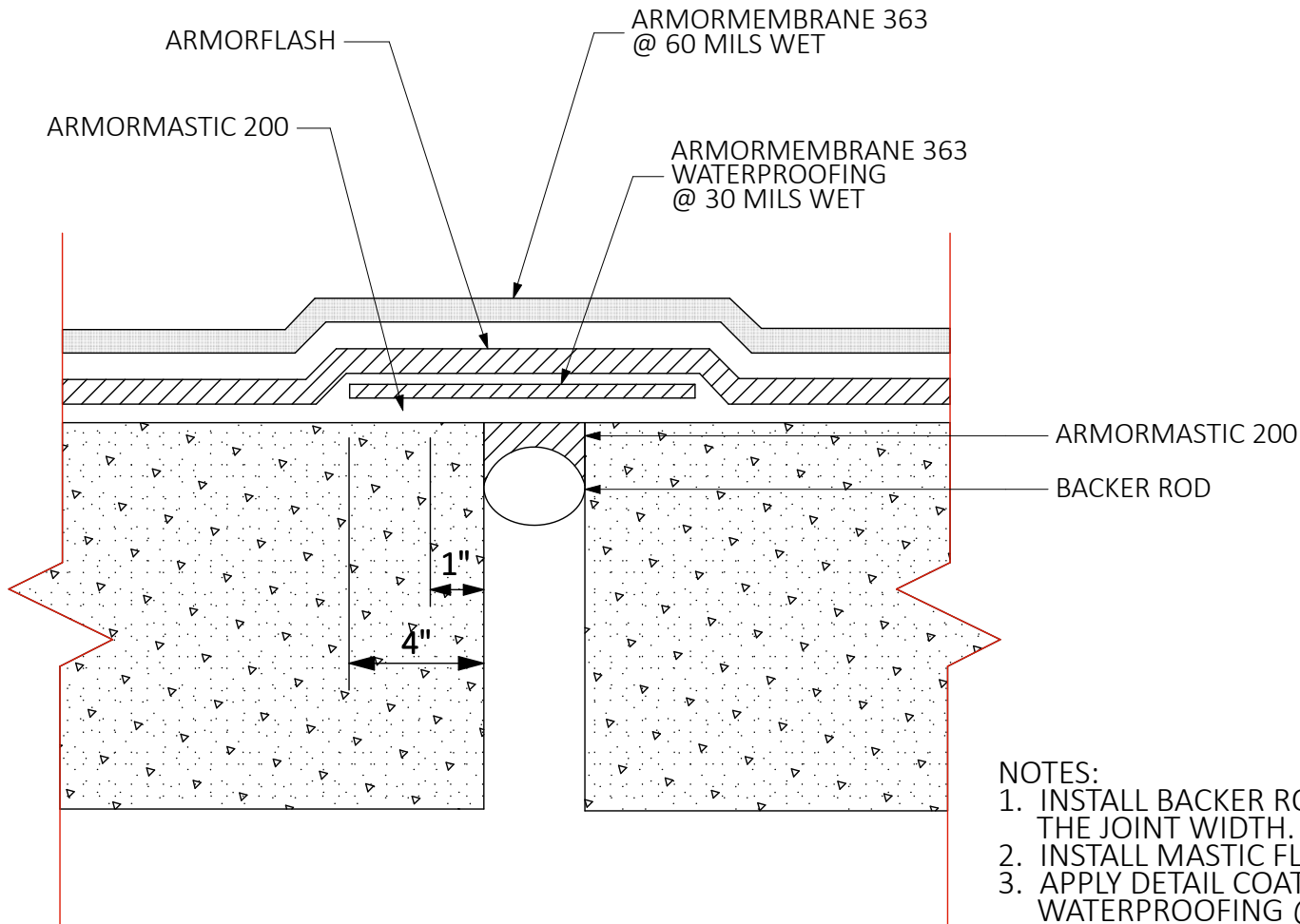
1. APPLY ARMORMASTIC 200 A MINIMUM OF 2" ON EITHER SIDE OF CRACK.
2. APPLY ARMORFLASH A MINIMUM OF 4" ON EITHER SIDE OF CRACK.
3. DETAIL ALL ARMORFLASH SEAMS WITH ARMORMASTIC 200

AM363 / CTL

**CRACK TREATMENT
NON MOVING CRACKS LESS THAN 1/16"**



**WATERPROOFING &
BUILDING PRODUCTS**



NOTES:

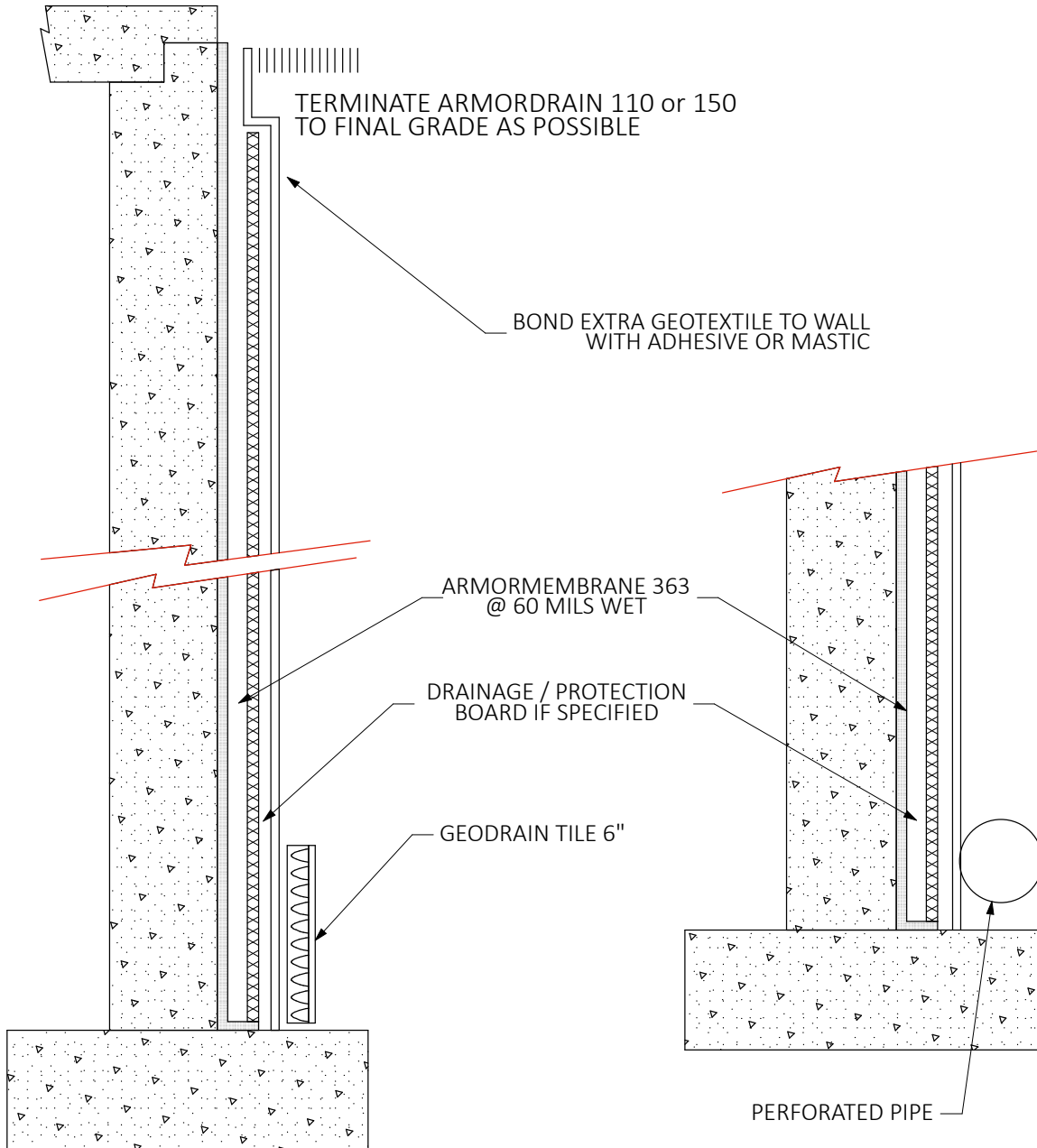
1. INSTALL BACKER ROD 1/2 THE DEPTH OF THE JOINT WIDTH. 1/2" W = 1/4" DEPTH.
2. INSTALL MASTIC FLUSH WITH SURFACE.
3. APPLY DETAIL COAT OF ARMORMEMBRANE 363 WATERPROOFING @ 30 MILS WET.
4. APPLY WATERPROOFING COAT @ 60 MILS WET

AM363 / EJL

EXPANSION JOINTS LESS THAN 1/2"



**WATERPROOFING &
BUILDING PRODUCTS**

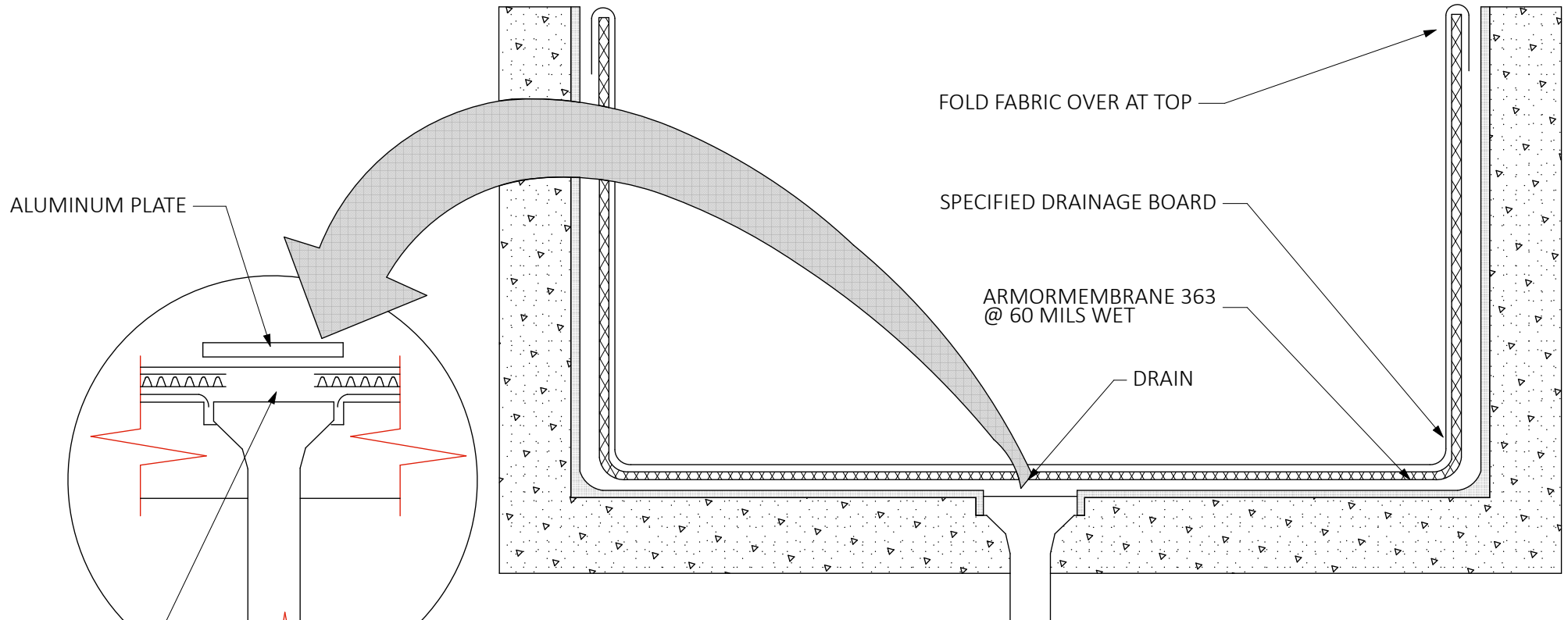


AM363 / FWS

TYPICAL FOUNDATION WALL DETAIL



**WATERPROOFING &
BUILDING PRODUCTS**



ALUMINUM PLATE

FOLD FABRIC OVER AT TOP

SPECIFIED DRAINAGE BOARD

ARMORMEMBRANE 363
@ 60 MILS WET

DRAIN

REMOVE
CORE

DETAIL 1

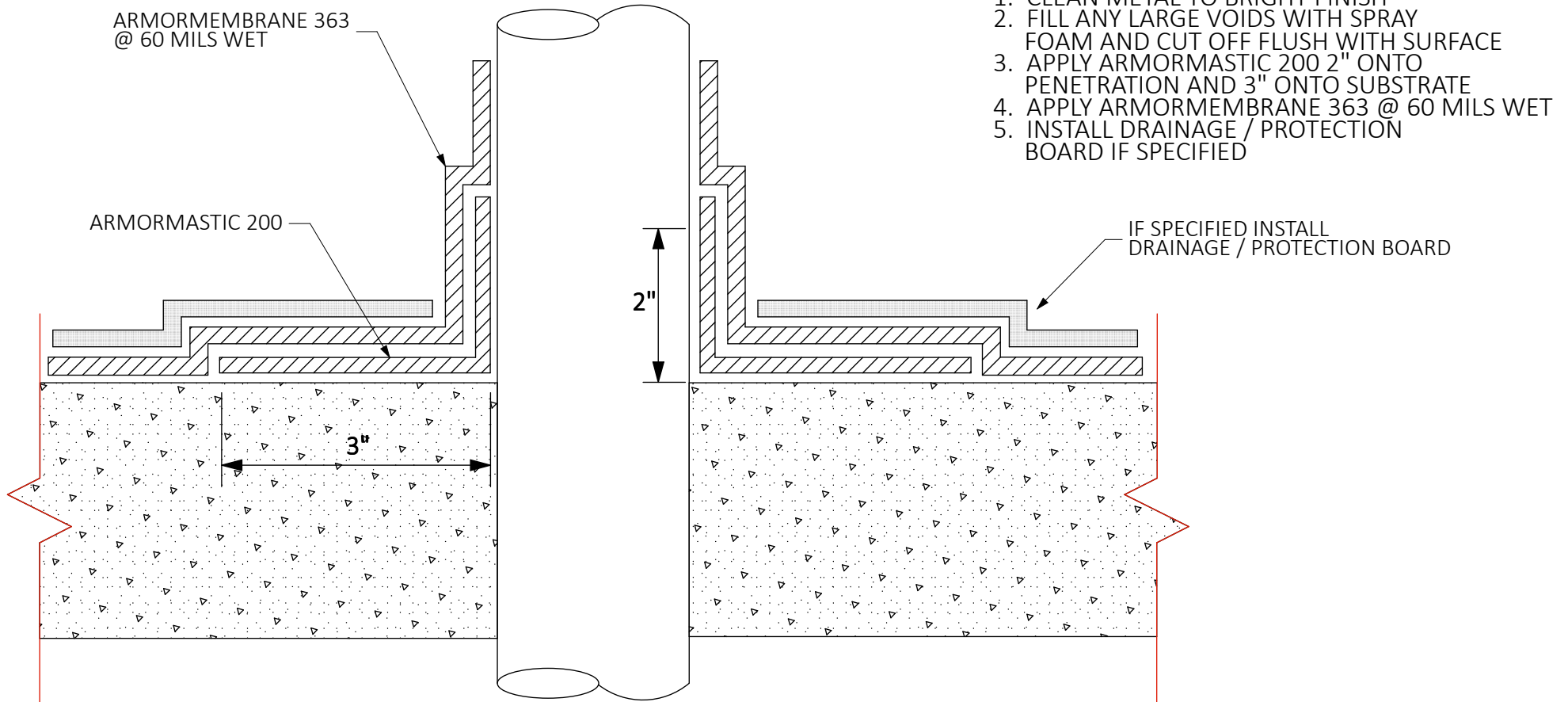
NOTES:
WHEN USING ARMORDRAIN 110 or 150 REMOVE CORE AND
COVER WITH ALUMINUM PLATE AS SHOWN IN DETAIL

AM363 / TPD

TYPICAL PLANTER DETAIL



**WATERPROOFING &
BUILDING PRODUCTS**



NOTES:

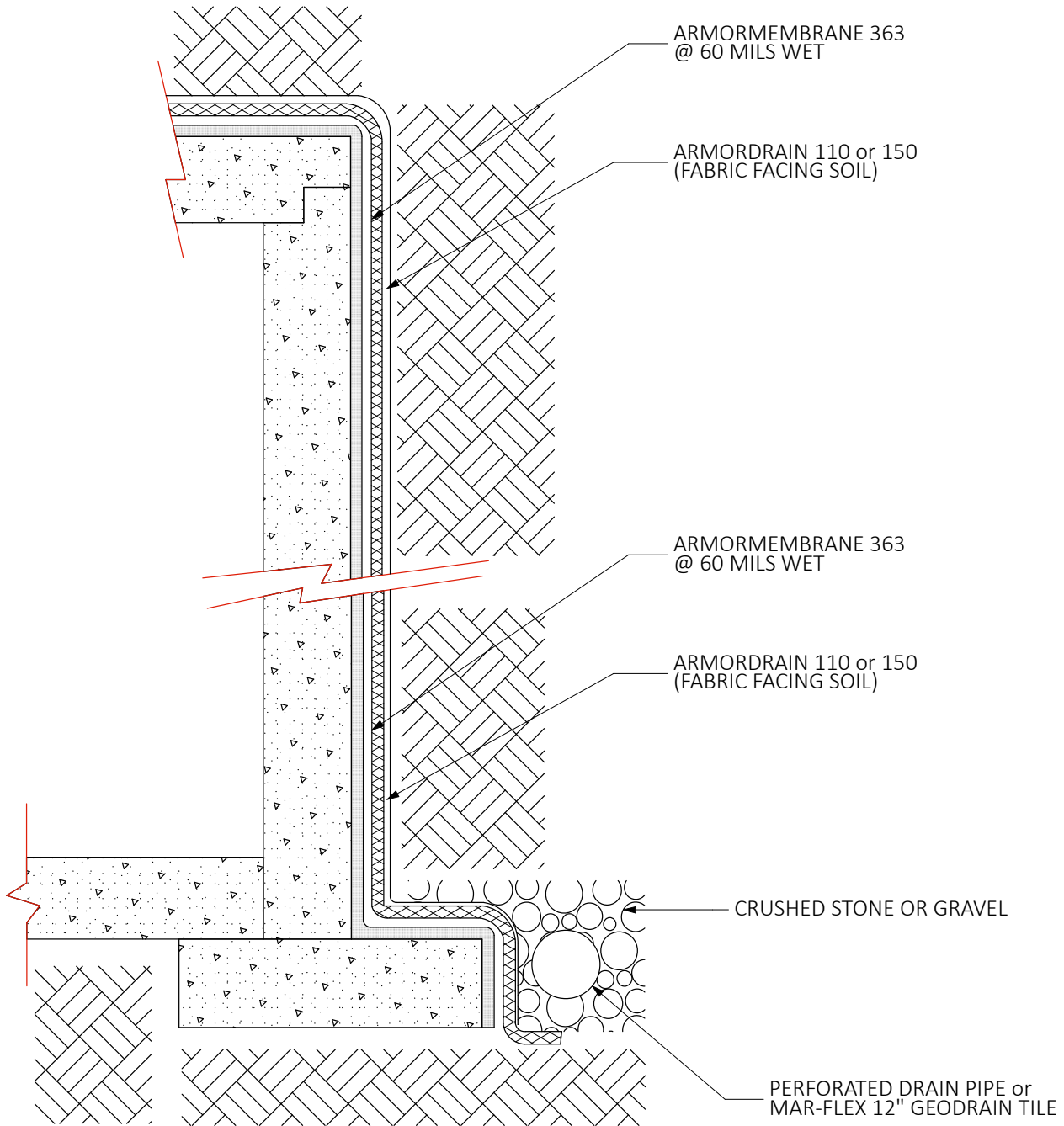
1. CLEAN METAL TO BRIGHT FINISH
2. FILL ANY LARGE VOIDS WITH SPRAY FOAM AND CUT OFF FLUSH WITH SURFACE
3. APPLY ARMORMASTIC 200 2" ONTO PENETRATION AND 3" ONTO SUBSTRATE
4. APPLY ARMORMEMBRANE 363 @ 60 MILS WET
5. INSTALL DRAINAGE / PROTECTION BOARD IF SPECIFIED

AM363 / TPP

PIPE PENETRATION



**WATERPROOFING &
BUILDING PRODUCTS**



AM363 / TTD

TYPICAL TUNNEL DETAIL