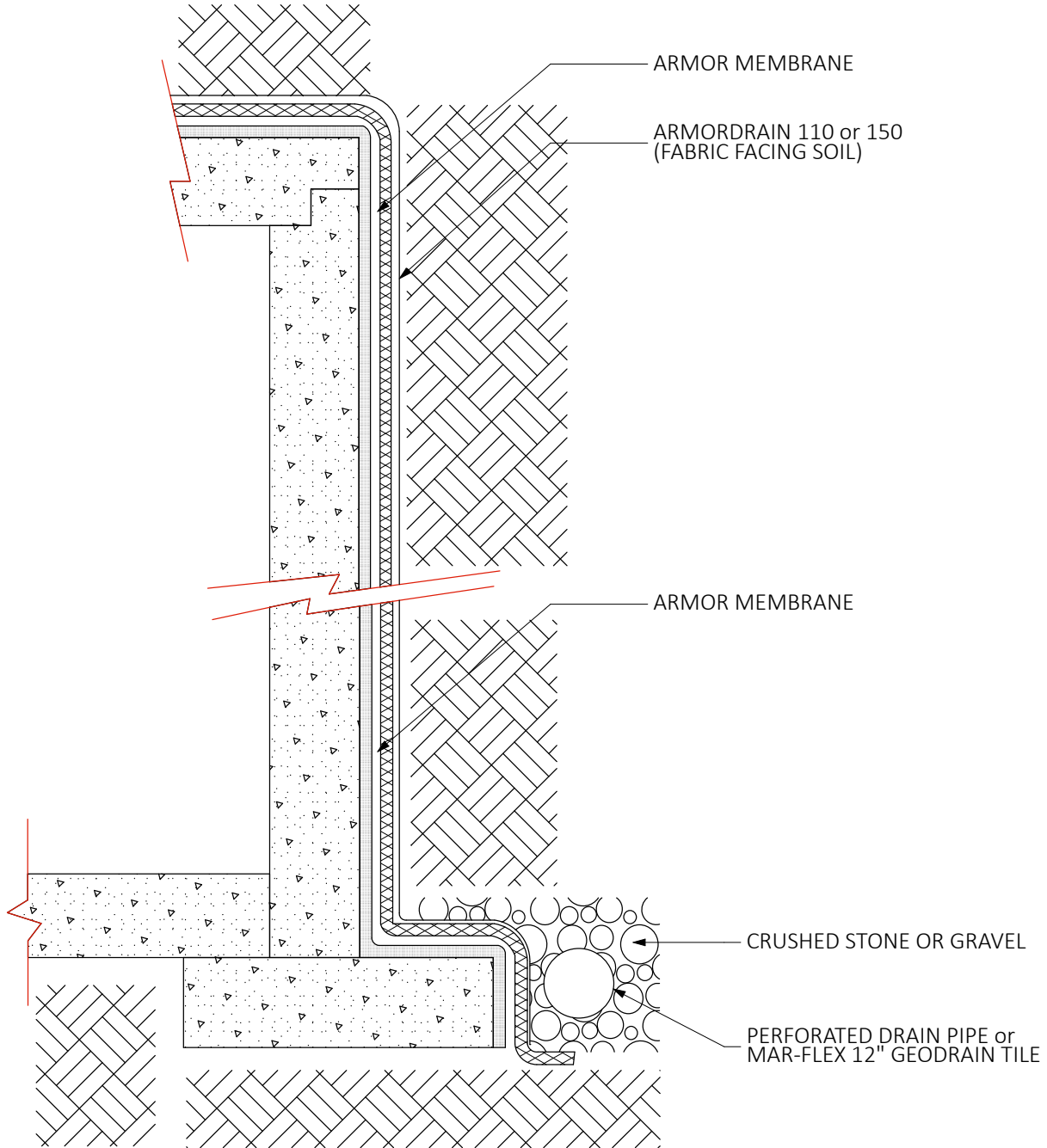




**WATERPROOFING &  
BUILDING PRODUCTS**



DB 100 & 150 / TD

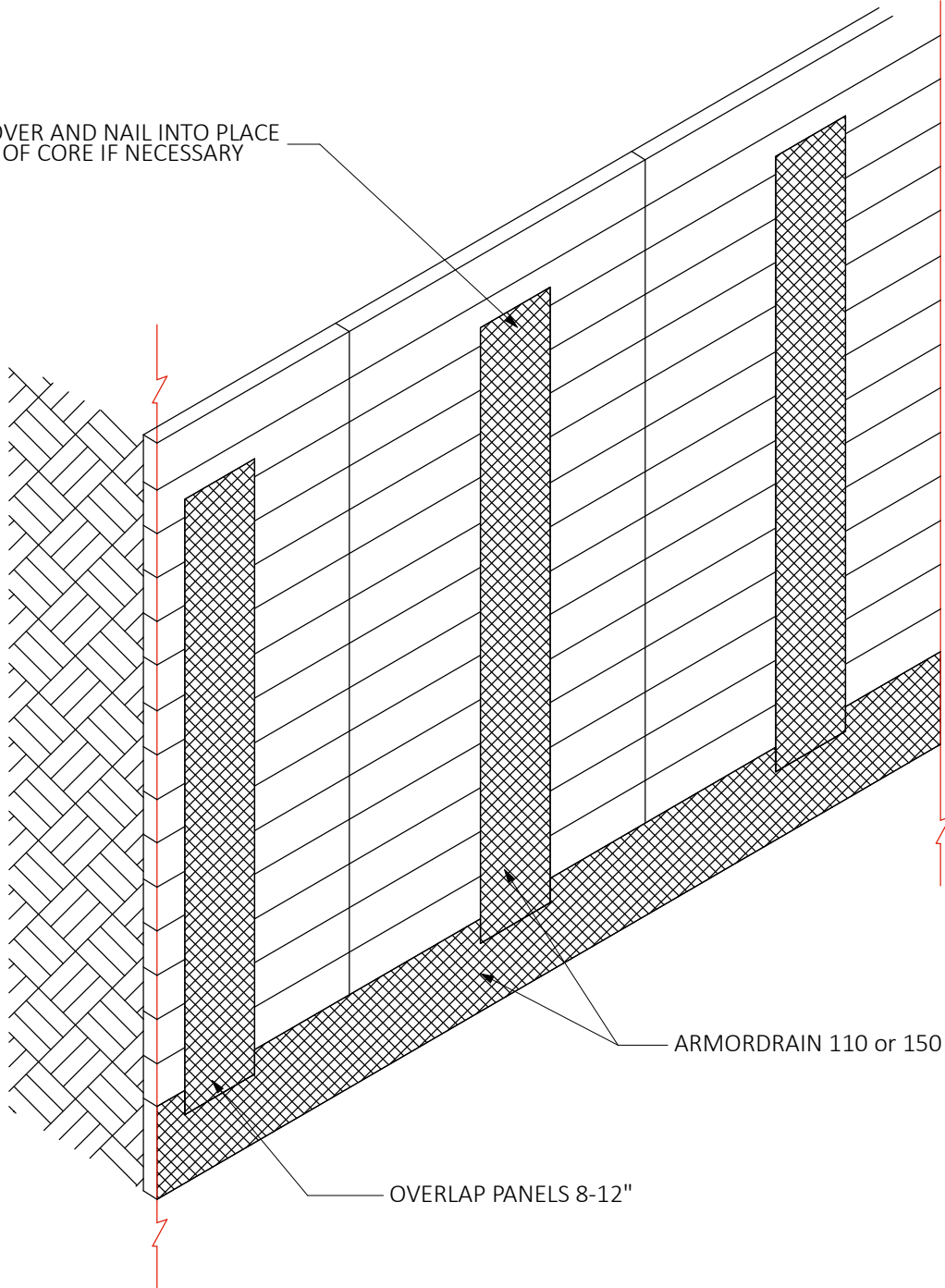
TYPICAL TUNNEL DETAIL



**WATERPROOFING &  
BUILDING PRODUCTS**



FOLD FABRIC OVER AND NAIL INTO PLACE  
REMOVE PART OF CORE IF NECESSARY



ARMORDRAIN 110 or 150

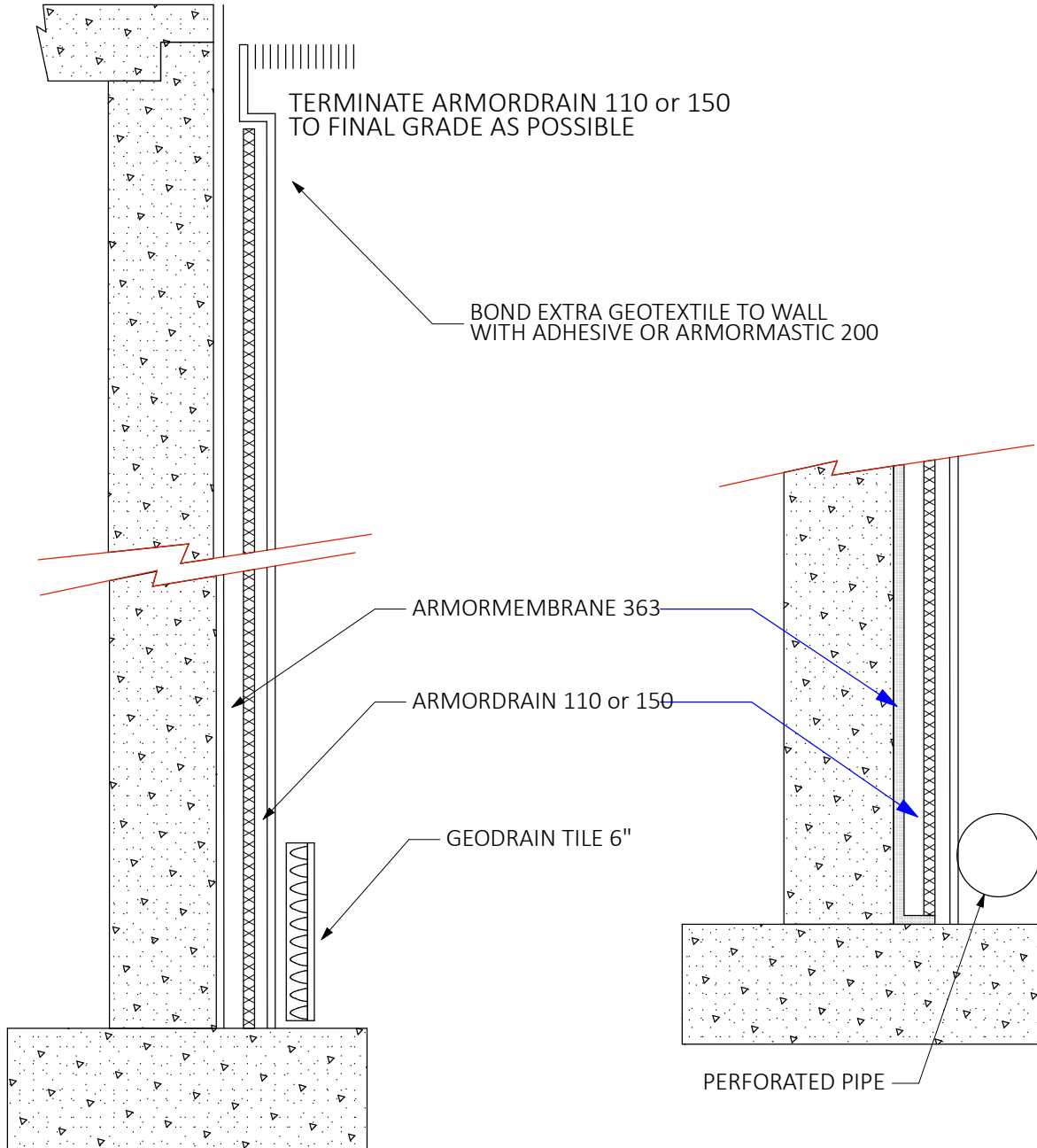
OVERLAP PANELS 8-12"

DB 110 & 150 / CLWD

TYPICAL CHIMNEY ON LAGGING WALL DETAIL



**WATERPROOFING &  
BUILDING PRODUCTS**



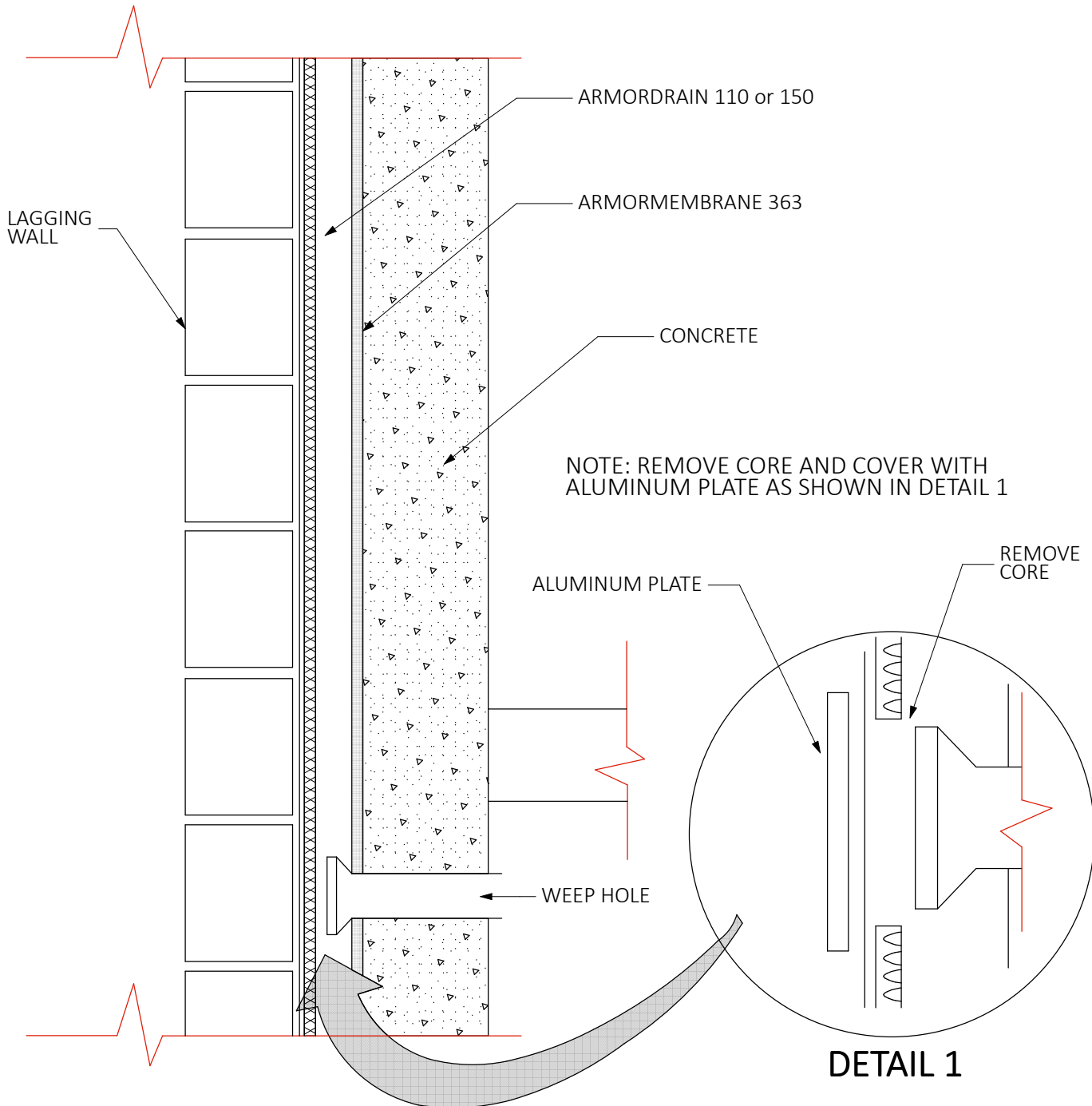
NOTES: ALTERNATE METHOD FOR WATER COLLECTION. SEE DRAIN AWAY FOUNDATION DRAINAGE FOR FITTINGS AND ADAPTORS

DB 110 & 150 / FWD

TYPICAL FOUNDATION WALL DETAIL



**WATERPROOFING &  
BUILDING PRODUCTS**

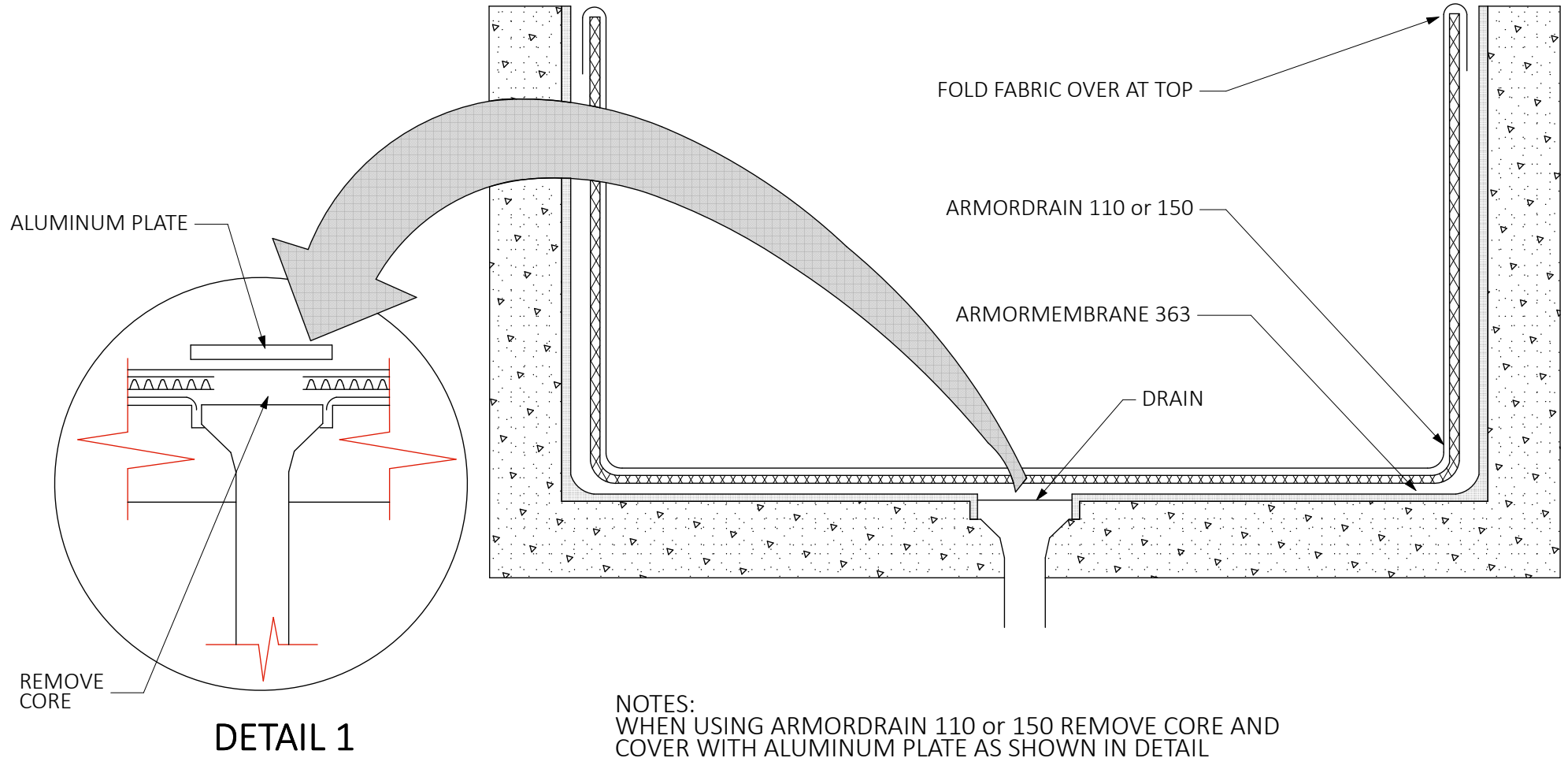


DB110 & 150 / LWD

TYPICAL LAGGING WALL DETAIL



**WATERPROOFING &  
BUILDING PRODUCTS**



DB 110 & 150 / PD

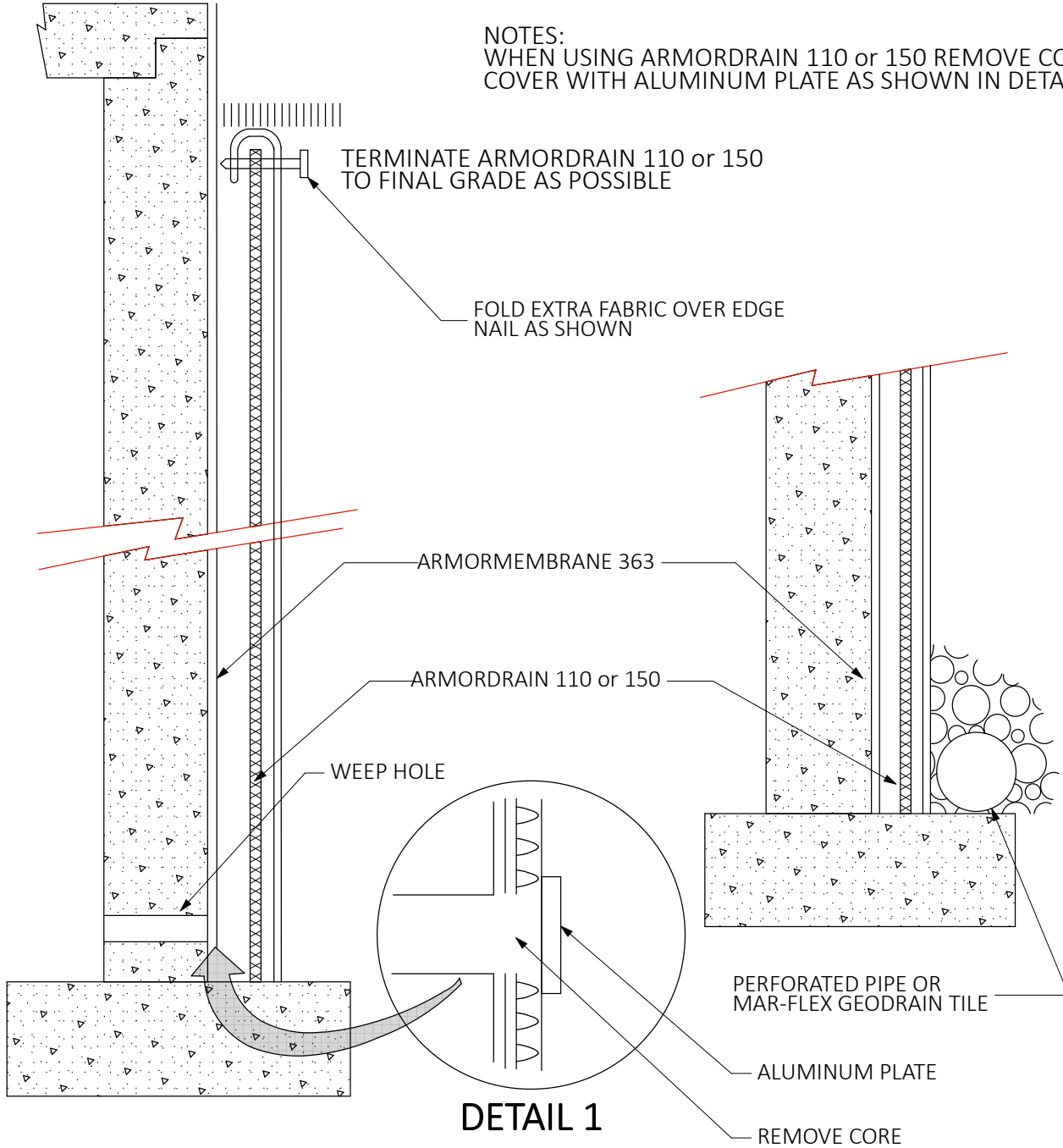
TYPICAL PLANTER DETAIL



**WATERPROOFING &  
BUILDING PRODUCTS**



NOTES:  
WHEN USING ARMORDRAIN 110 or 150 REMOVE CORE AND  
COVER WITH ALUMINUM PLATE AS SHOWN IN DETAIL

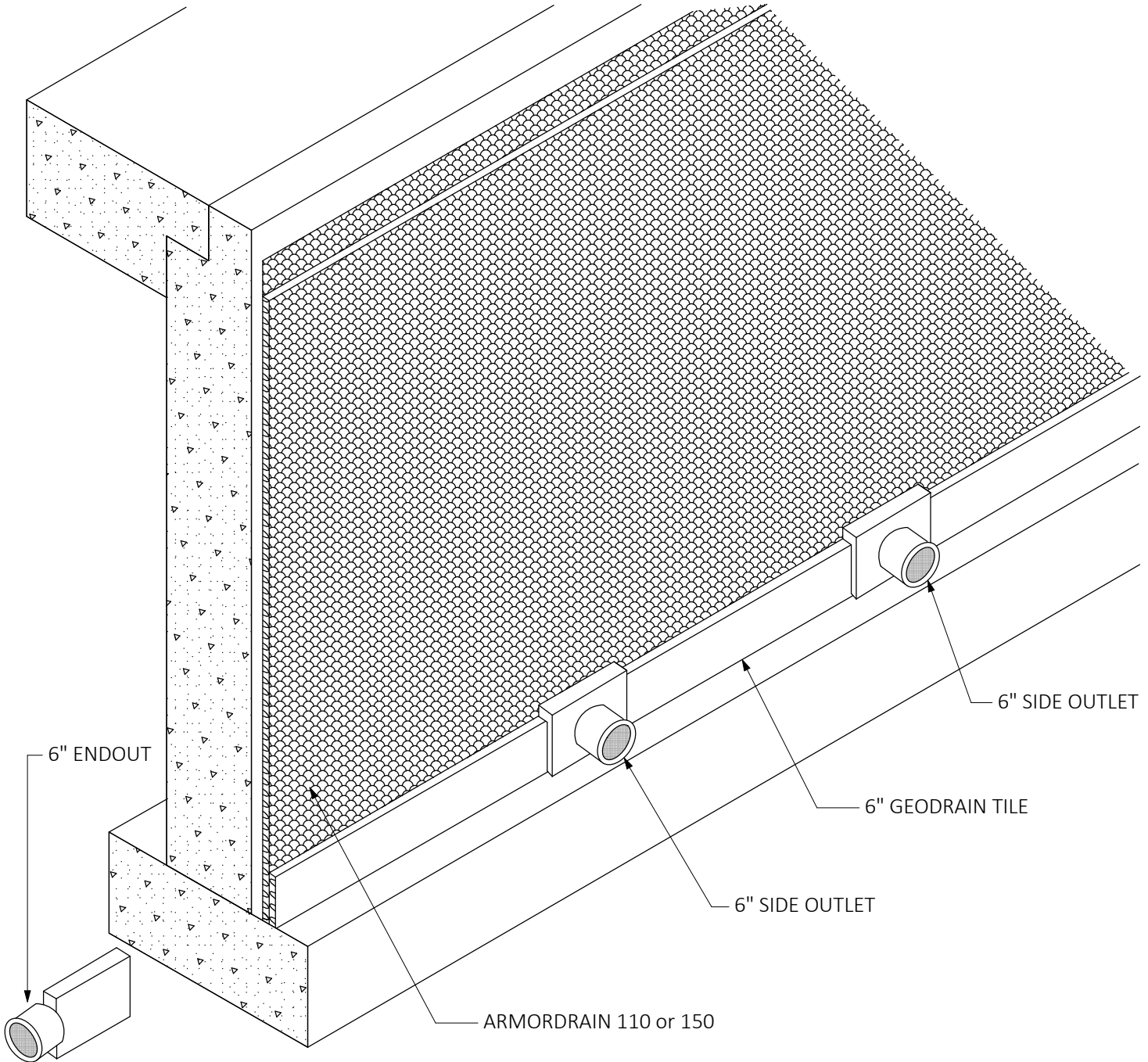


DB 110 & 150 / RWD

TYPICAL RETAINING WALL DETAIL



**WATERPROOFING &  
BUILDING PRODUCTS**

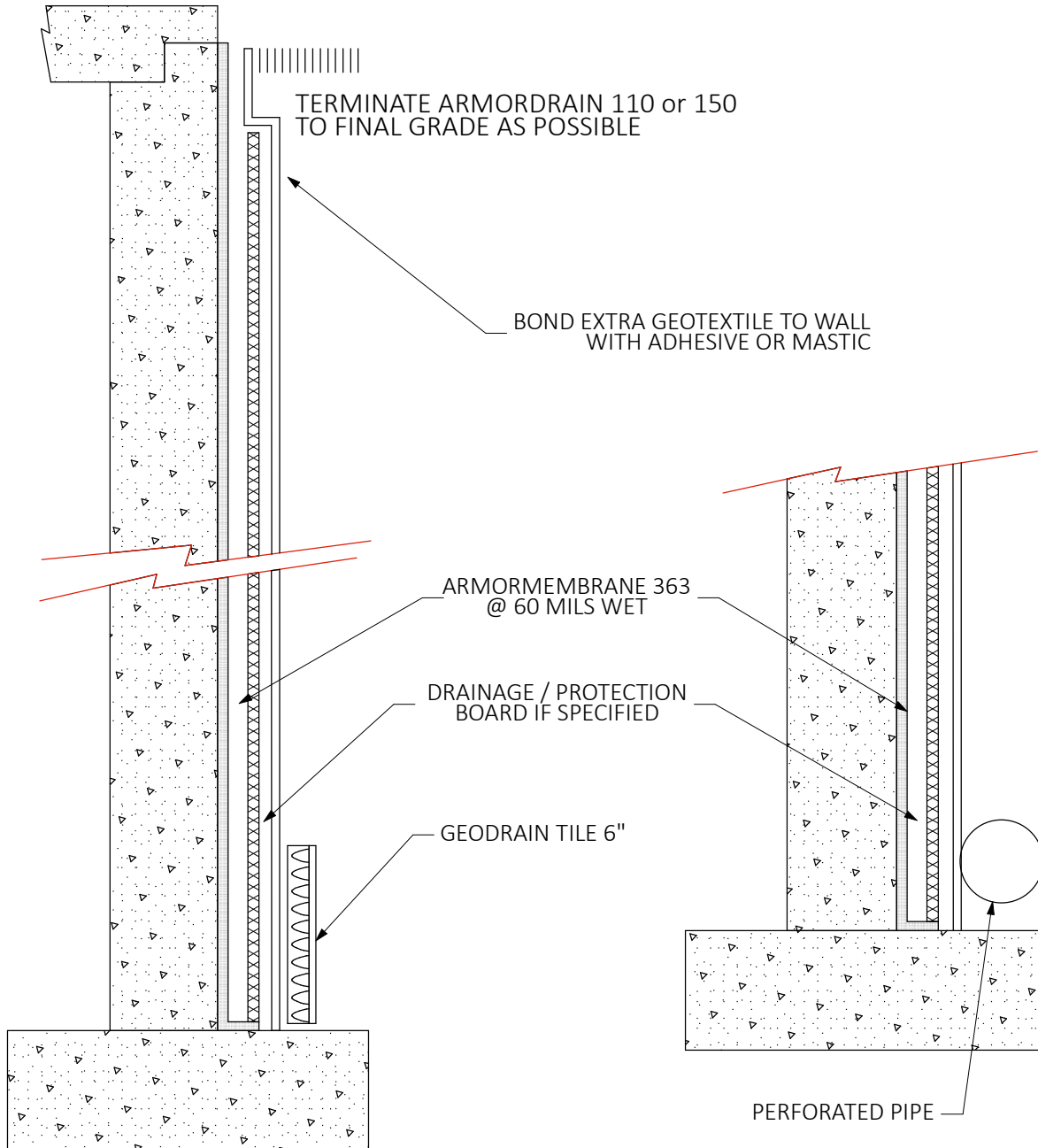


DB 6" / WDWCD

TYPICAL WALL DRAINAGE WATER COLLECTION DETAIL



**WATERPROOFING &  
BUILDING PRODUCTS**



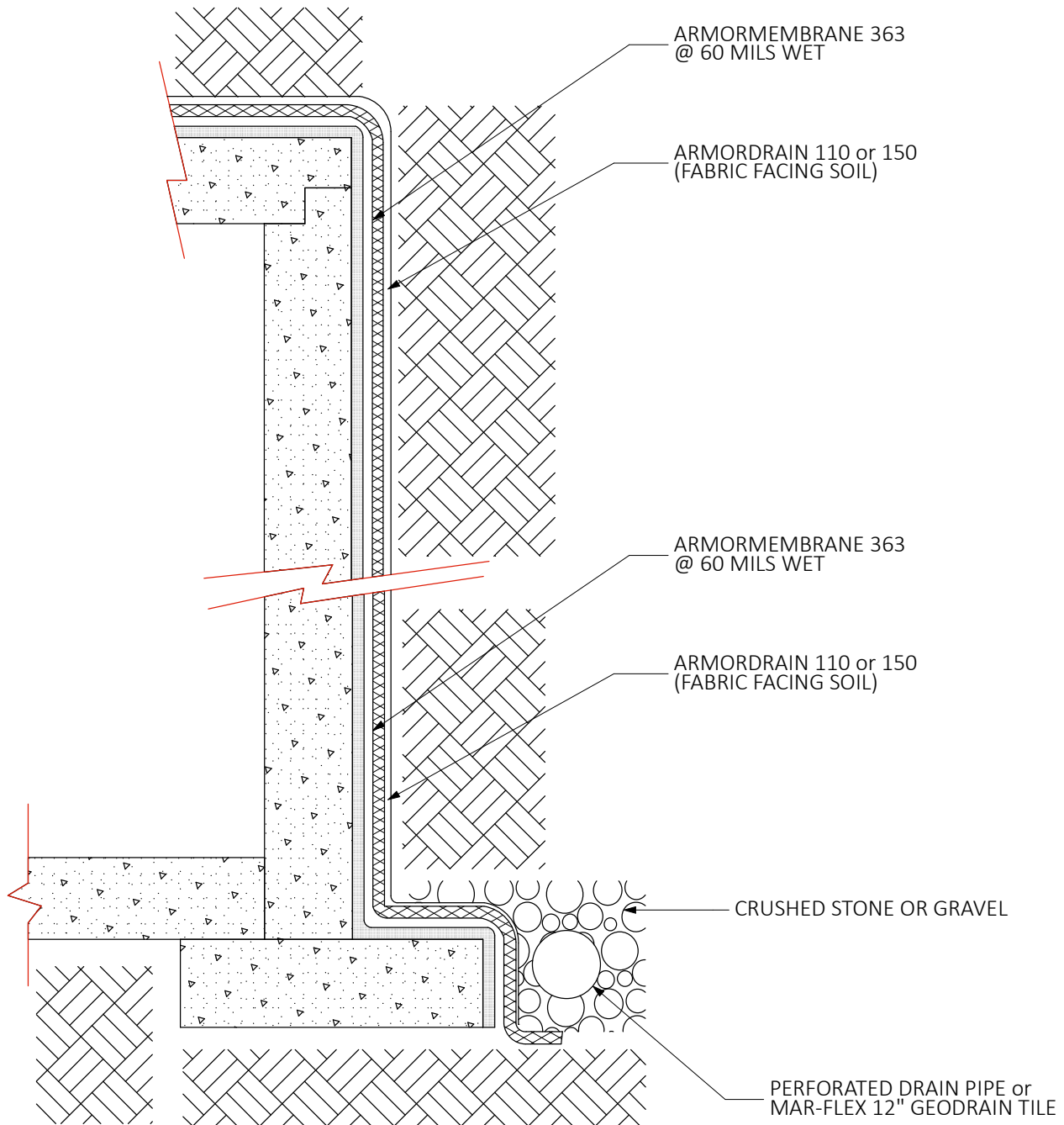
P363 / FWS

TYPICAL FOUNDATION WALL DETAIL





**WATERPROOFING &  
BUILDING PRODUCTS**



P363 / TTD

TYPICAL TUNNEL DETAIL