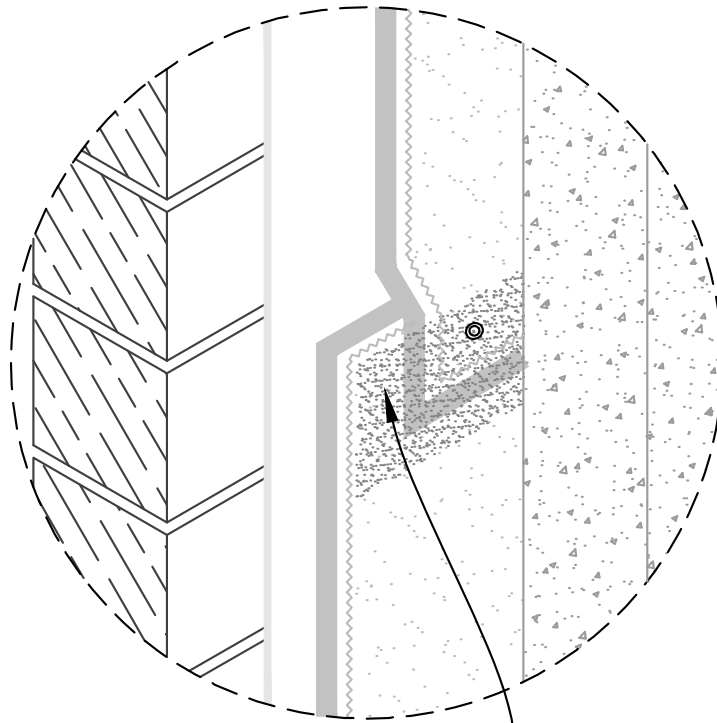


B-1

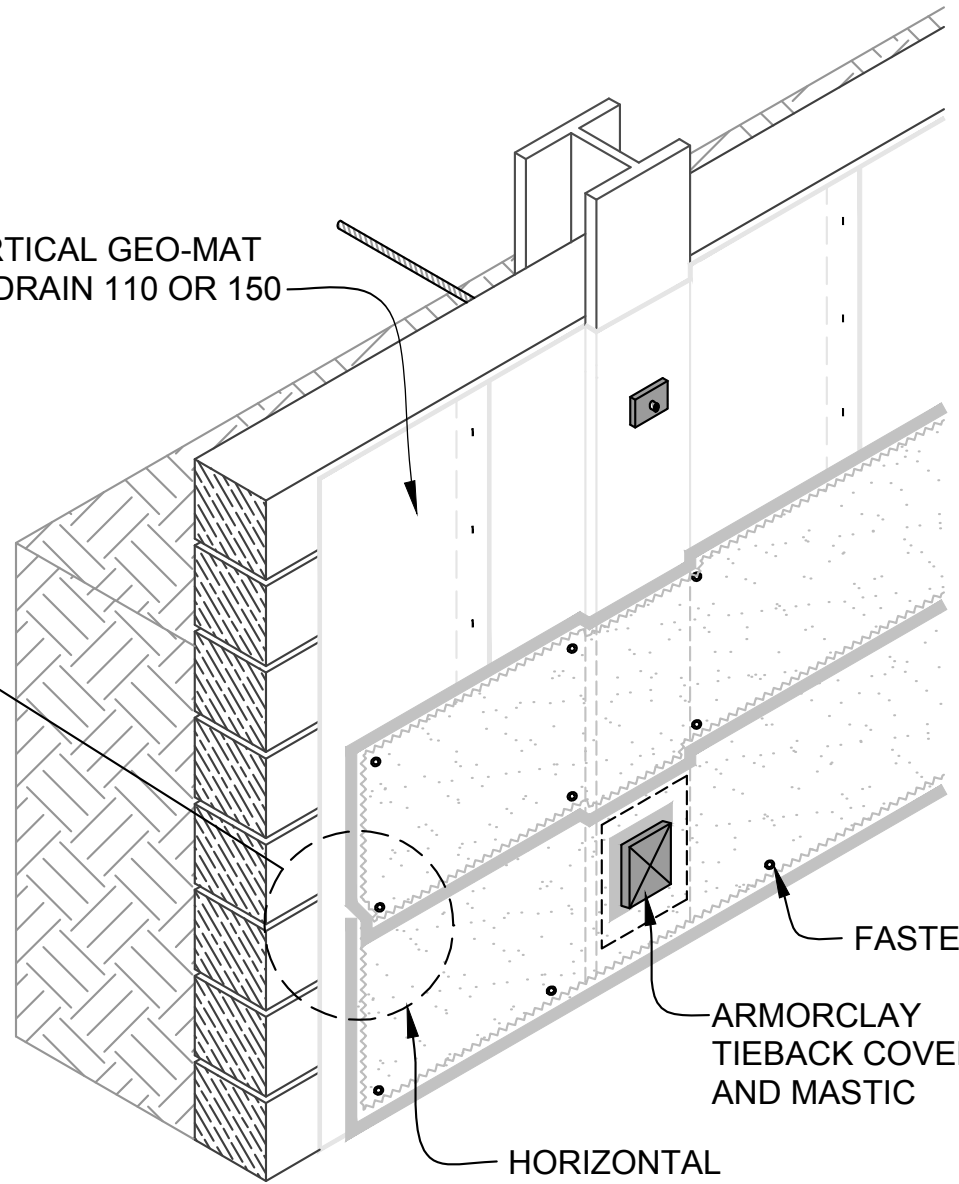
DIRECT WATERPROOFING
APPLICATION TO LAGGING





MEMBRANE BONDED WITH
ARMORCLAY MASTIC ADHESIVE
INSIDE AND OVER SEAMS

VERTICAL GEO-MAT
"C" DRAIN 110 OR 150



FASTENERS

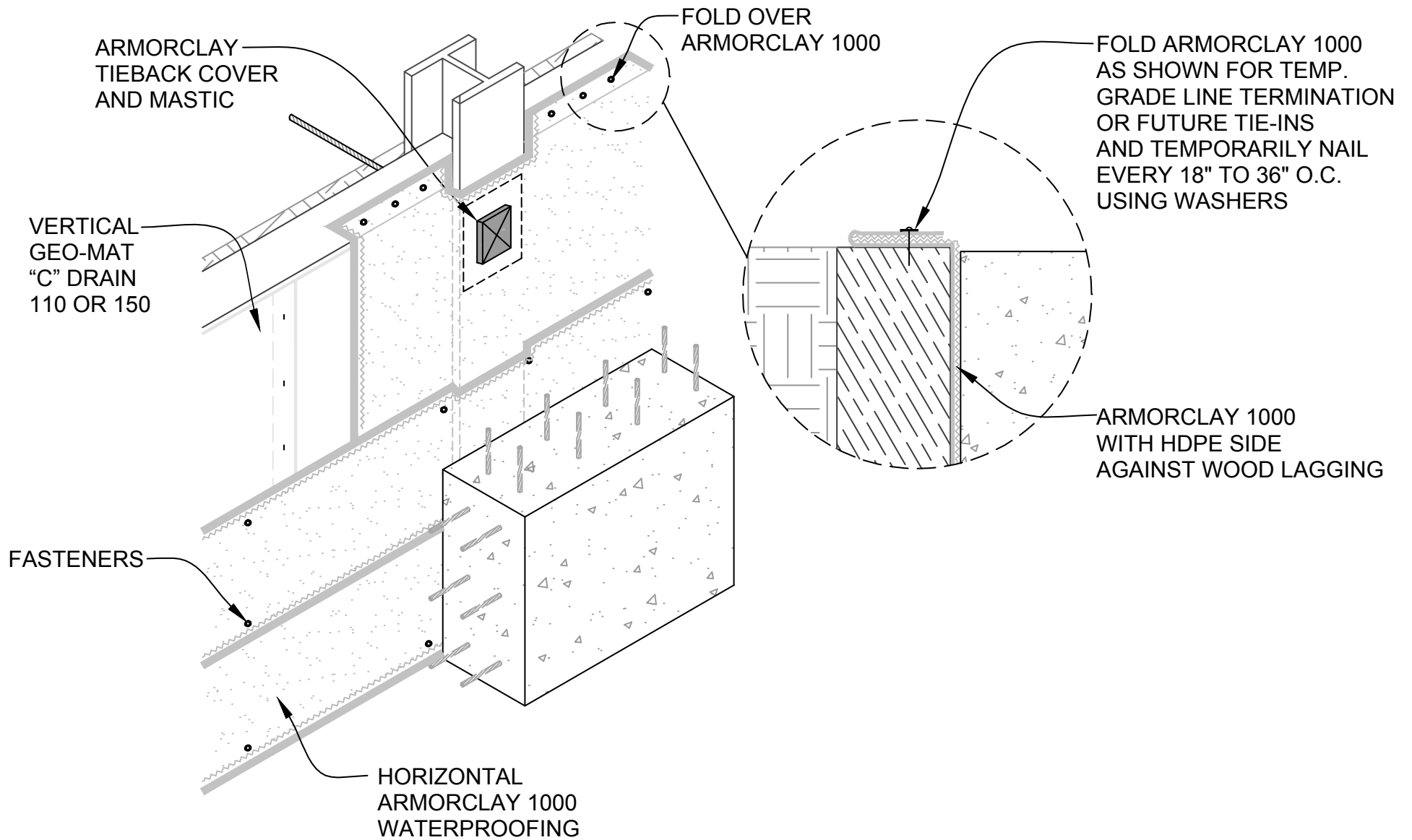
ARMORCLAY
TIEBACK COVER
AND MASTIC

HORIZONTAL
ARMORCLAY 1000
WATERPROOFING

B-2

DIRECT WATERPROOFING
APPLICATION TO LAGGING

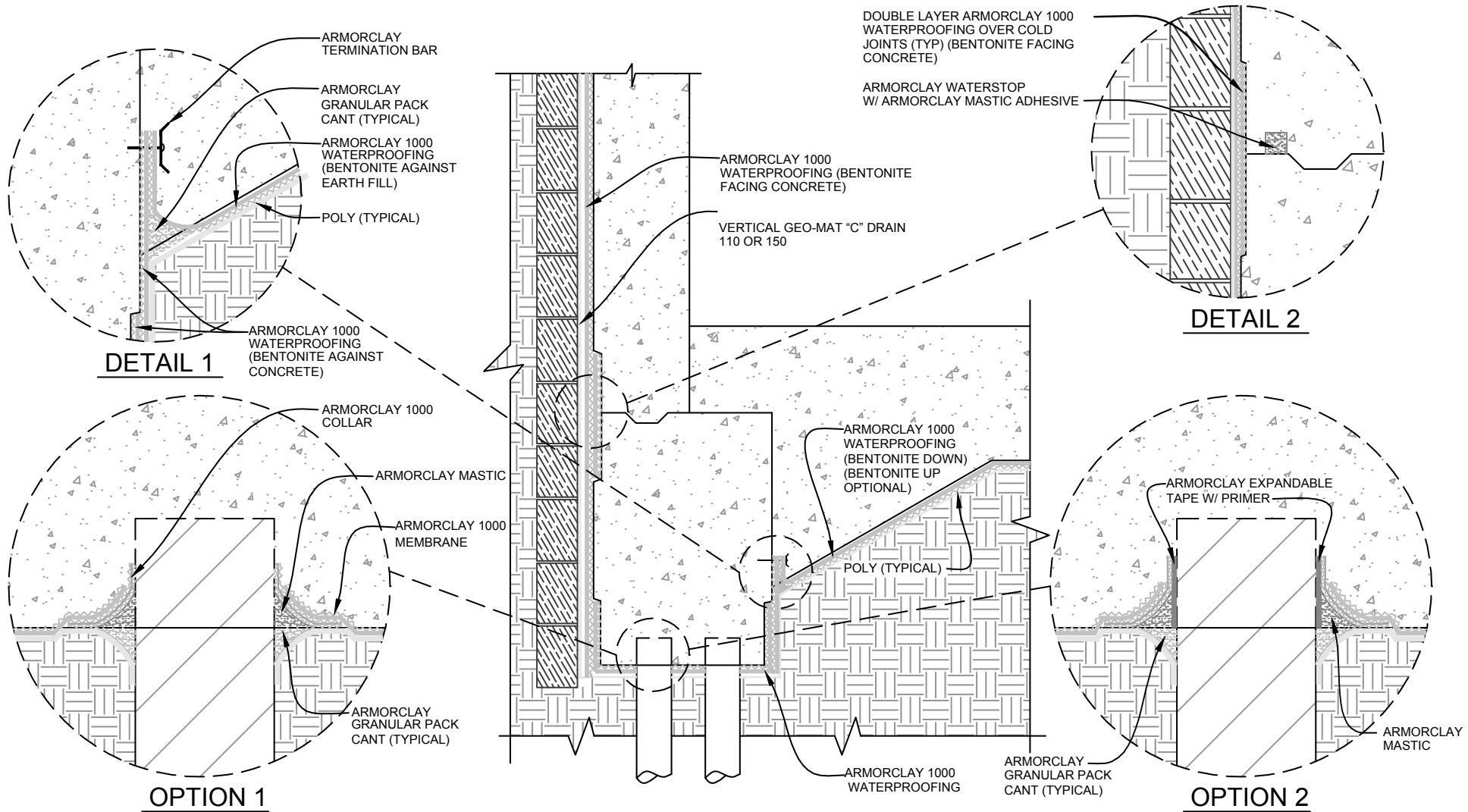




B-3

**DIRECT WATERPROOFING
APPLICATION TO LAGGING**



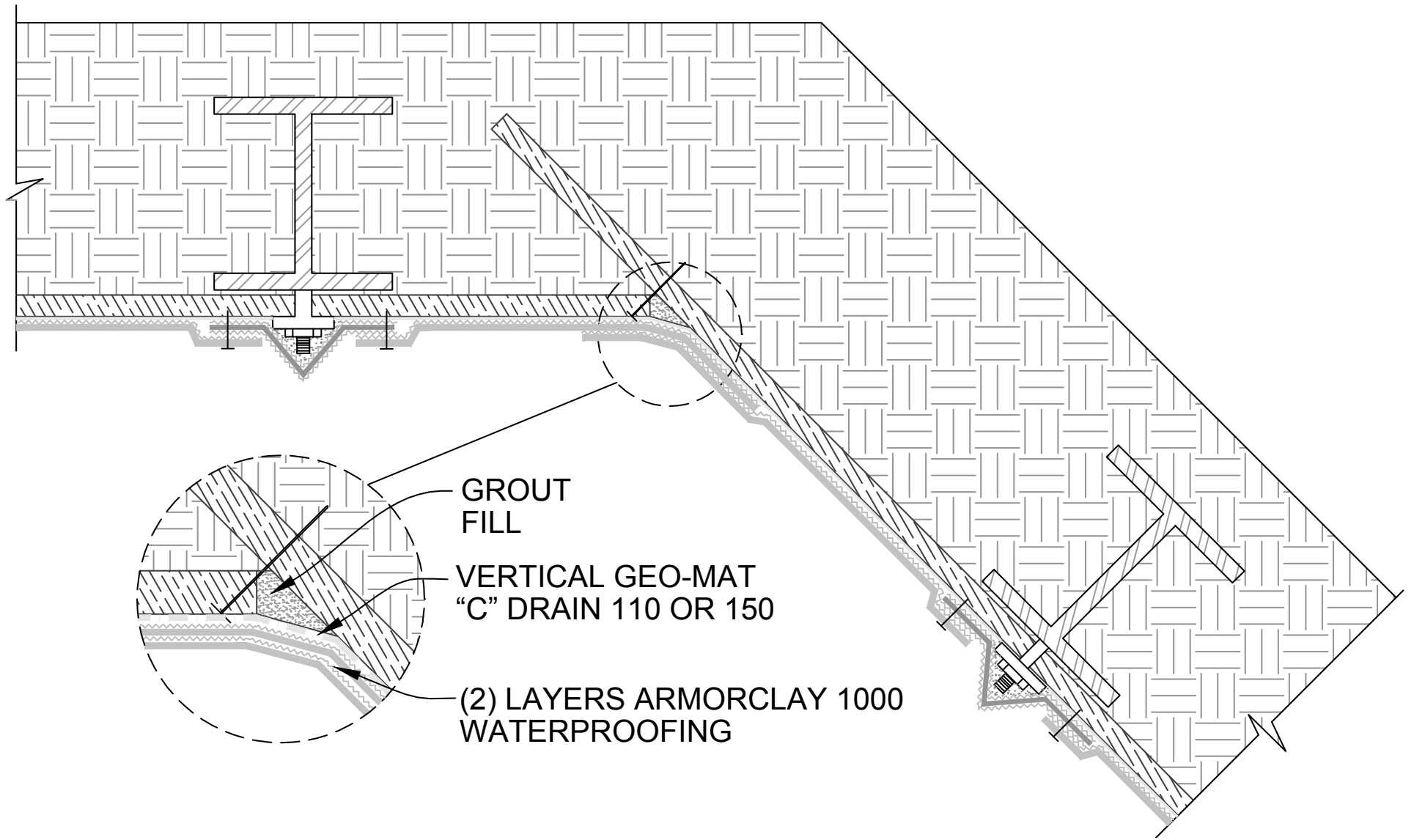


DETAIL 1

DETAIL 2

OPTION 1

OPTION 2



GROUT
FILL

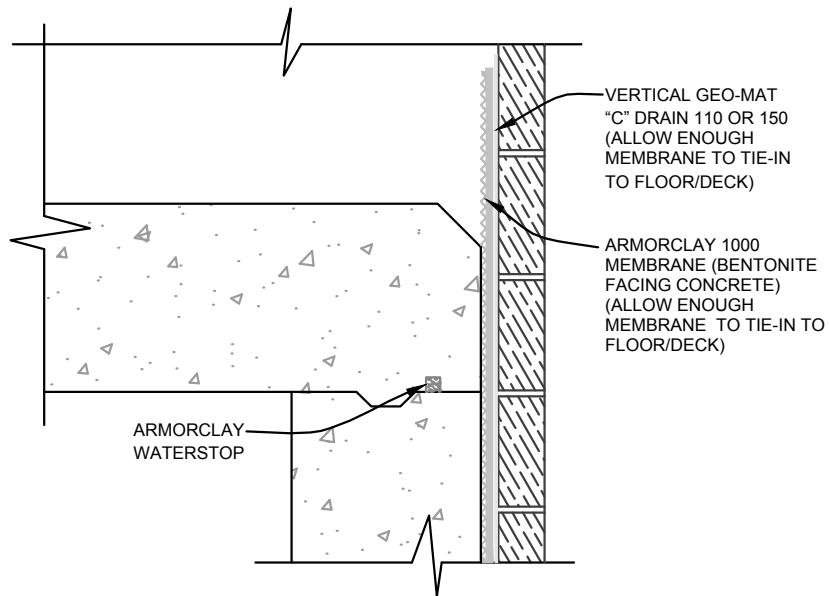
VERTICAL GEO-MAT
"C" DRAIN 110 OR 150

(2) LAYERS ARMORCLAY 1000
WATERPROOFING

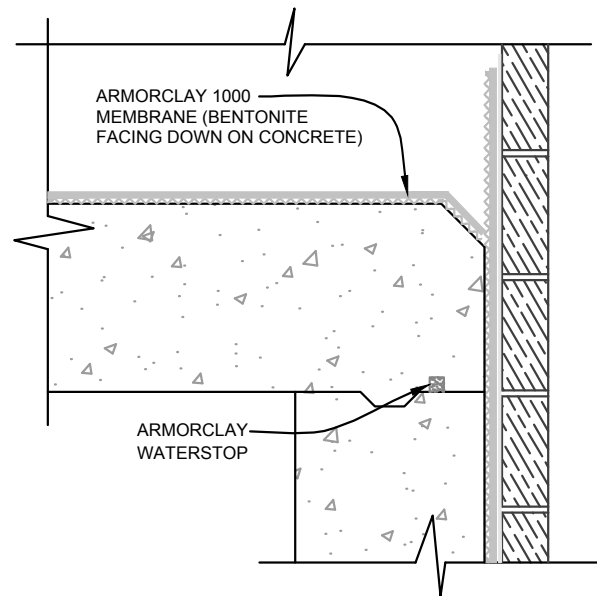
B-5

INSTALLATION COVERING
OBTUSE ANGLED CORNER

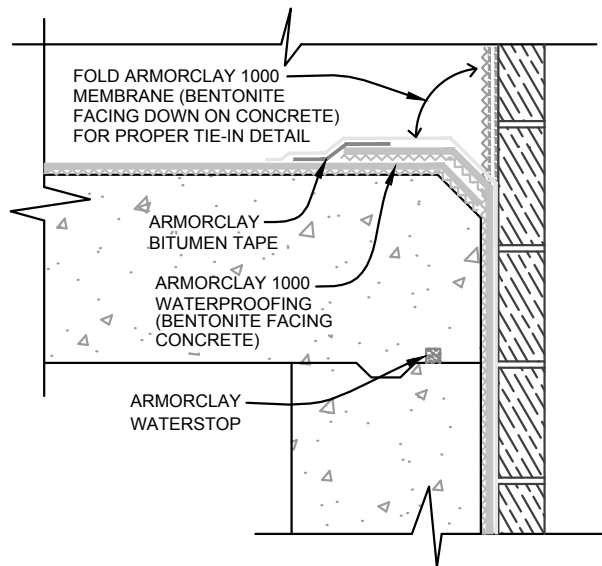




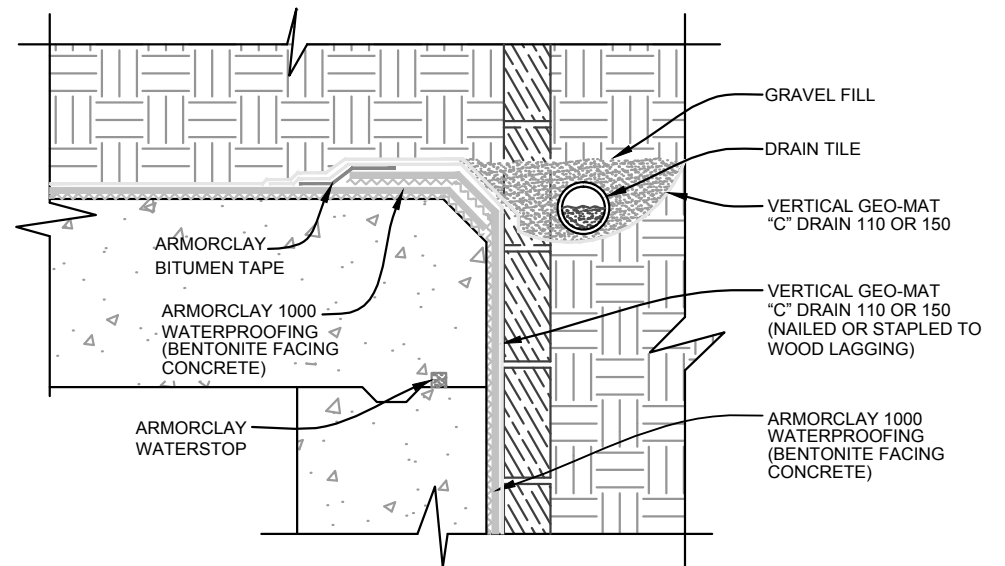
STEP #1



STEP #2



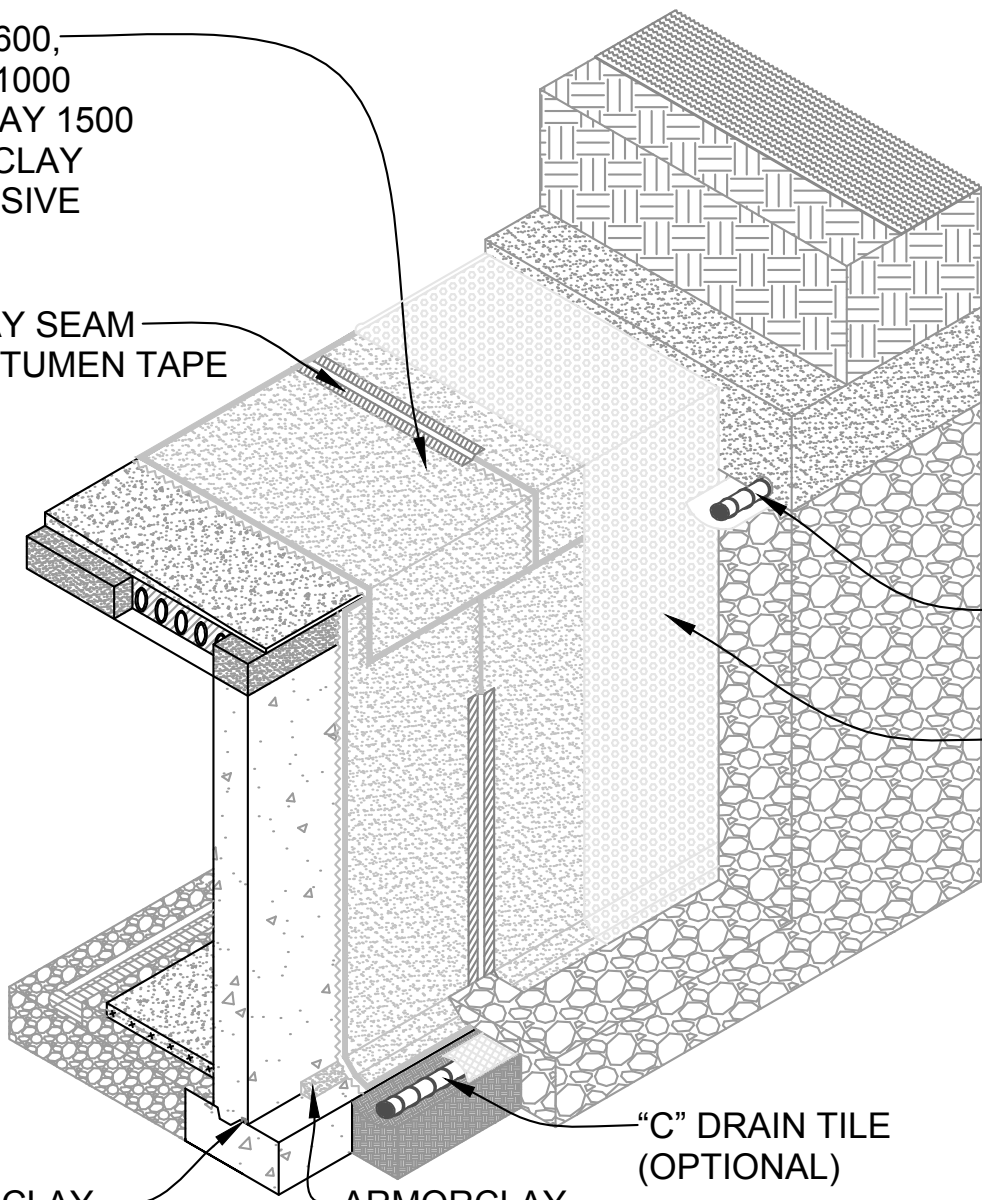
STEP #3



STEP #4

ARMORCLAY 600,
ARMORCLAY 1000
OR ARMORCLAY 1500
WITH ARMORCLAY
MASTIC ADHESIVE

ARMORCLAY SEAM
TAPE OR BITUMEN TAPE



DRAIN TILE

VERTICAL GEO-MAT
"C" DRAIN 150
(OPTIONAL)

"C" DRAIN TILE
(OPTIONAL)

ARMORCLAY
WATERSTOP

ARMORCLAY
GRANULAR
PACK (2" CANT)

B-7

TYPICAL UNDERGROUND
WALL SECTION



GEO-MAT "C" DRAIN
150 OR 400
(OPTIONAL)

ARMORCLAY 600,
ARMORCLAY 1000 OR
ARMORCLAY 1500
WITH ARMORCLAY
MASTIC ADHESIVE

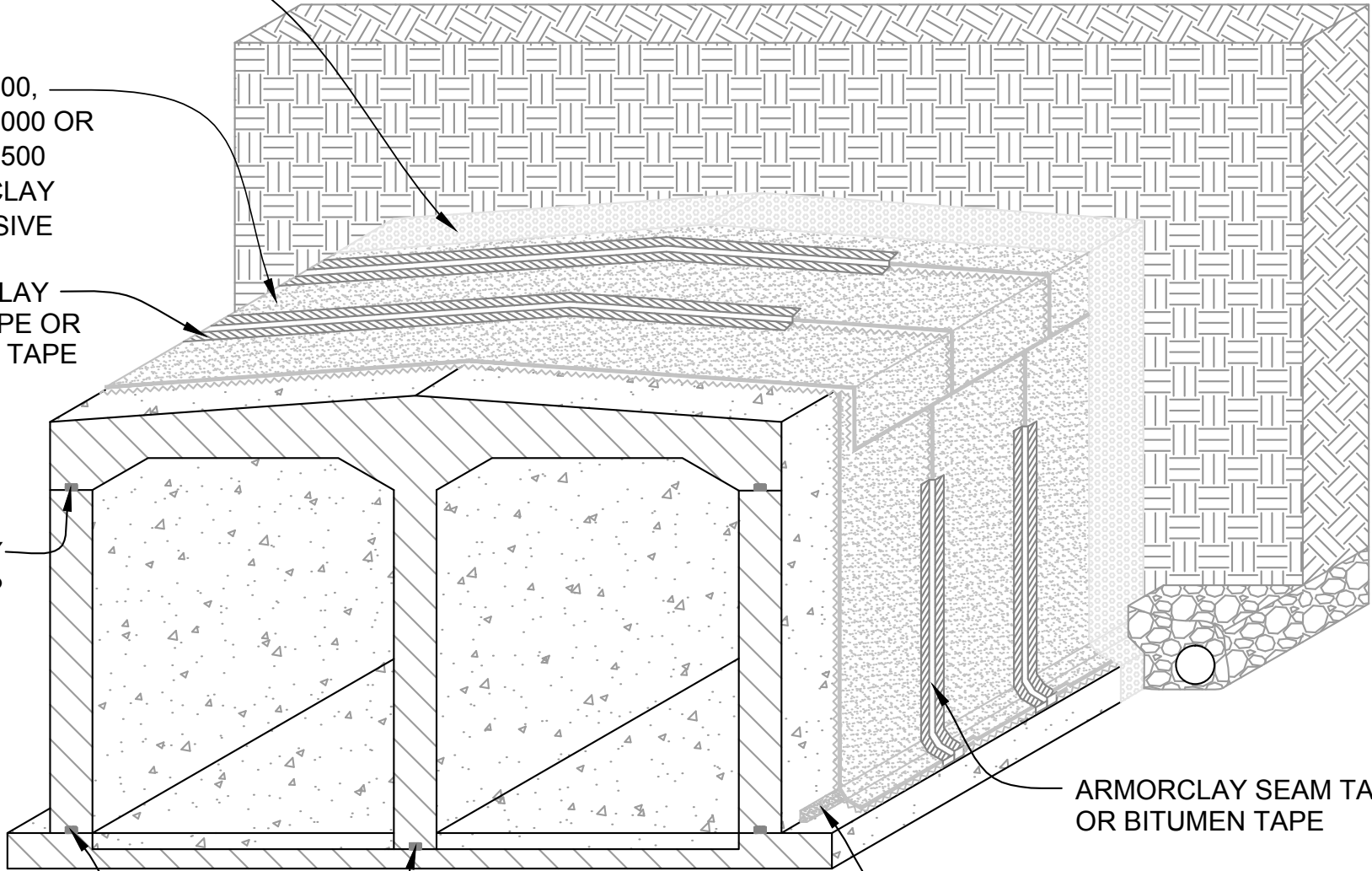
ARMORCLAY
SEAM TAPE OR
BITUMEN TAPE

ARMORCLAY
WATERSTOP

ARMORCLAY SEAM TAPE
OR BITUMEN TAPE

ARMORCLAY
WATERSTOP

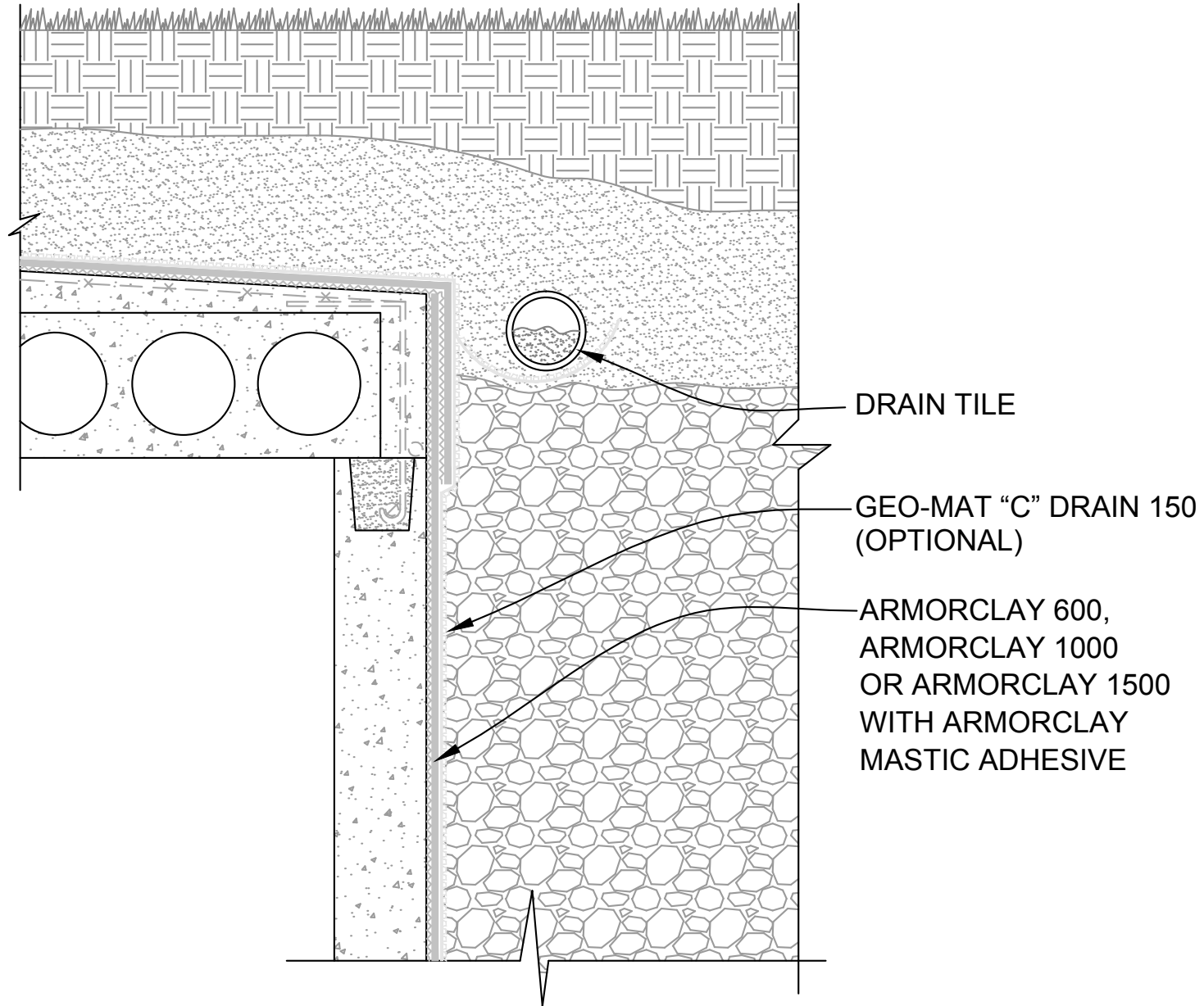
ARMORCLAY
GRANULAR PACK
(2" CANT)



B-8

CUT AND COVER
SUBWAY OR TUNNEL

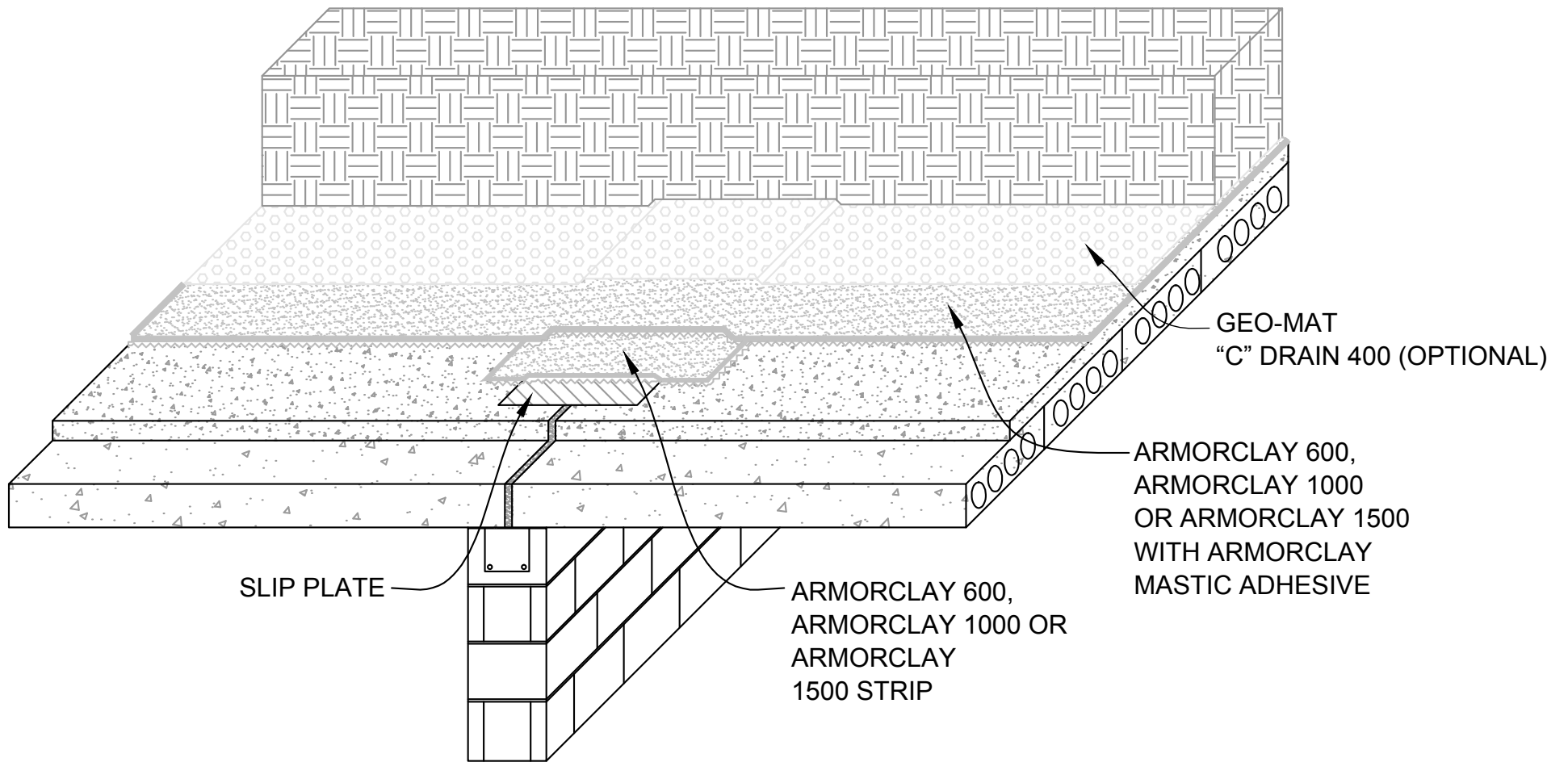




B-9

ROOF/WALL TRANSITION DETAIL
SHOWING OPTIONAL SURFACE DRAIN





B-10

**WATERPROOFING ON
PRE-STRESSED PLANK**



ARMORCLAY 600,
ARMORCLAY 1000
OR ARMORCLAY 1500 STRIP

GEO-MAT
"C" DRAIN 400
(OPTIONAL)

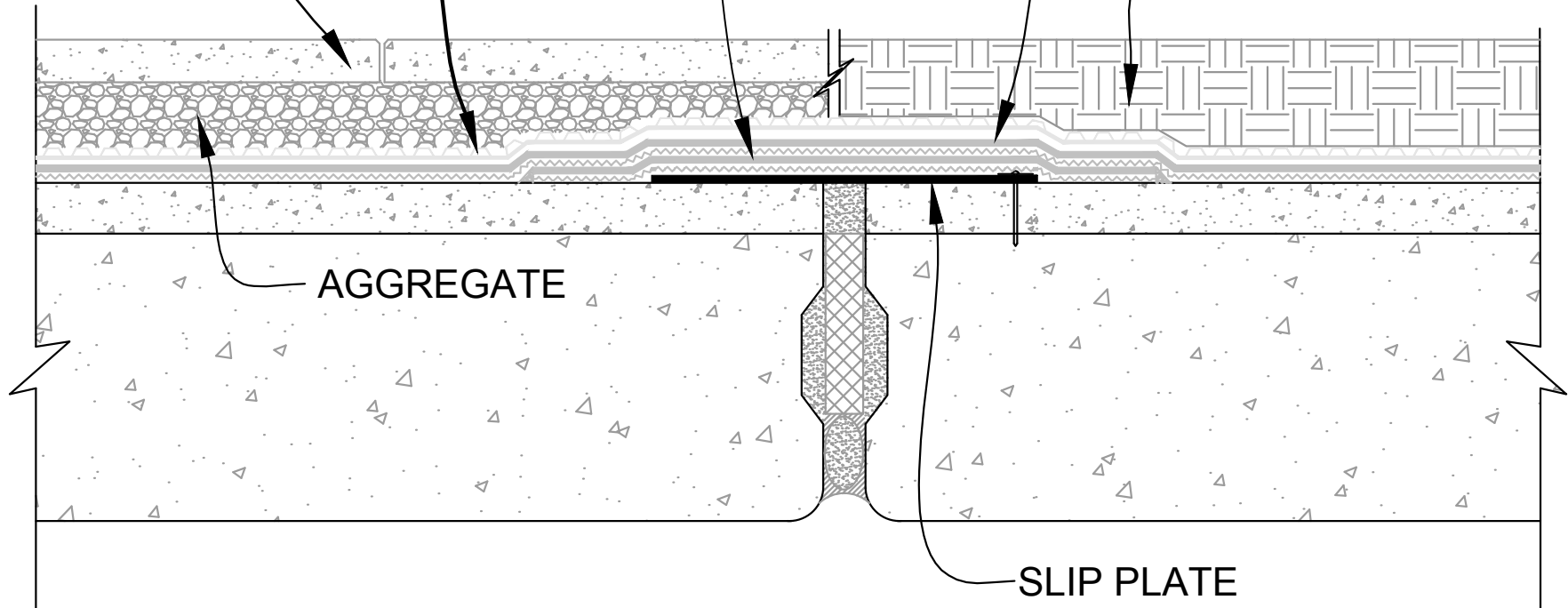
PAVERS

ARMORCLAY 600,
ARMORCLAY 1000
OR ARMORCLAY 1500
WITH ARMORCLAY
MASTIC ADHESIVE

EARTH

AGGREGATE

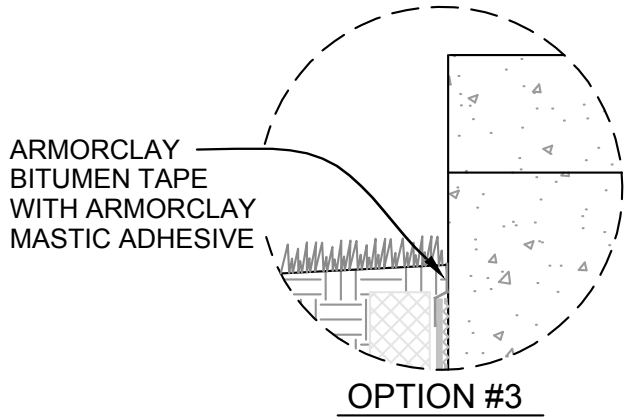
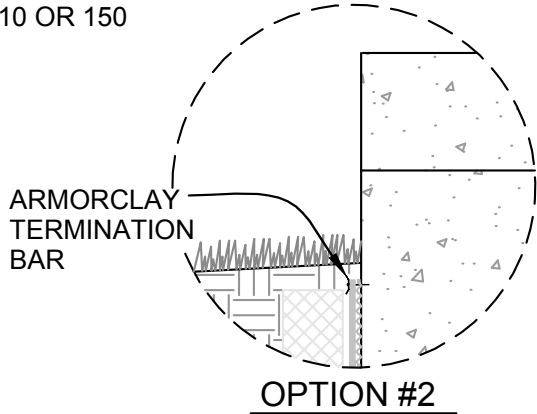
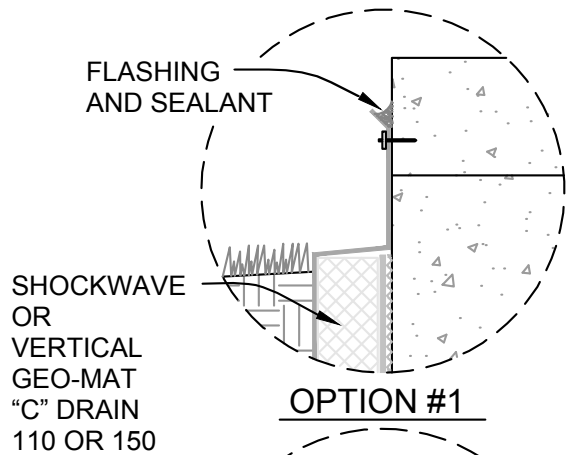
SLIP PLATE



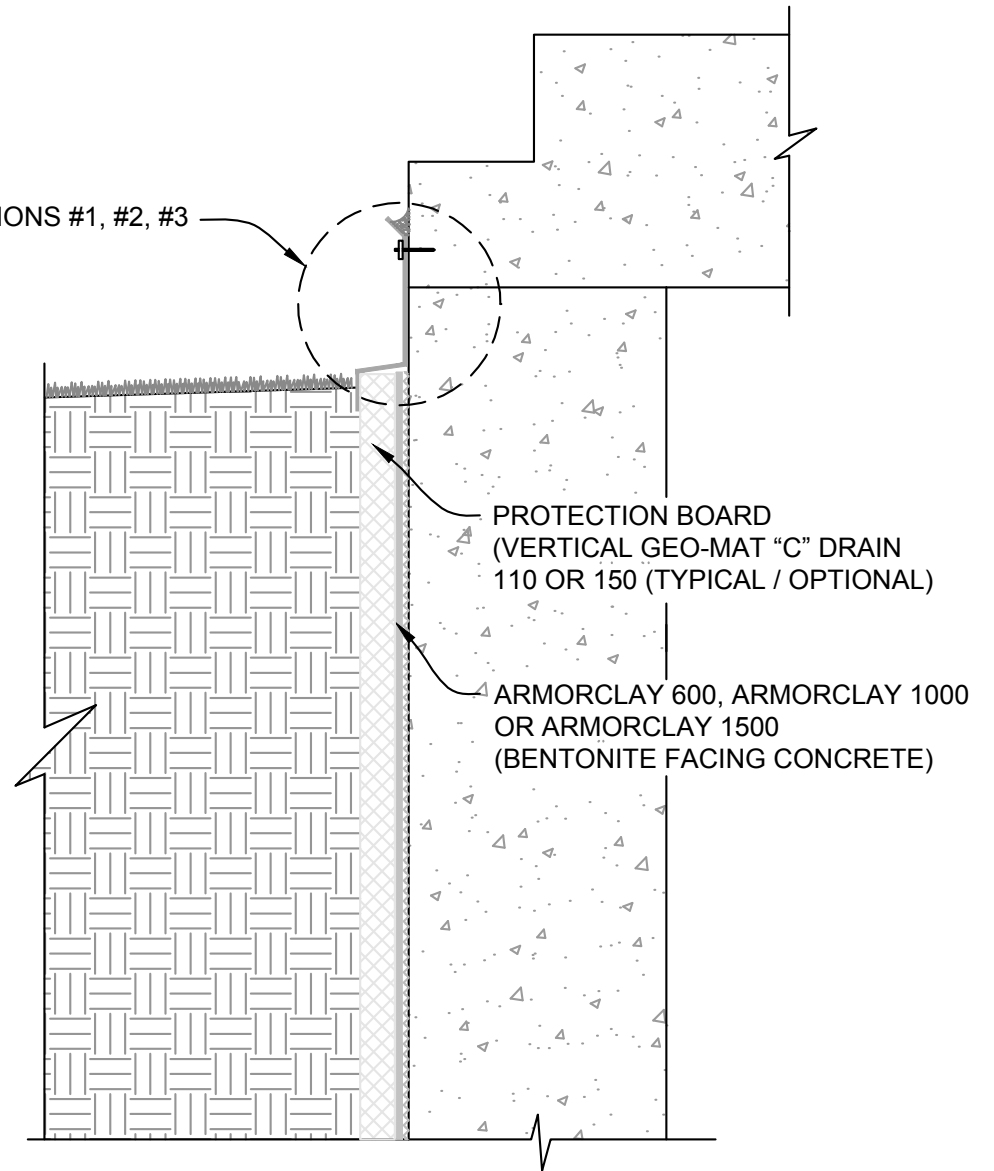
B-11

THERMAL BREAK
(EXPANSION OR ISOLATION JOINT)





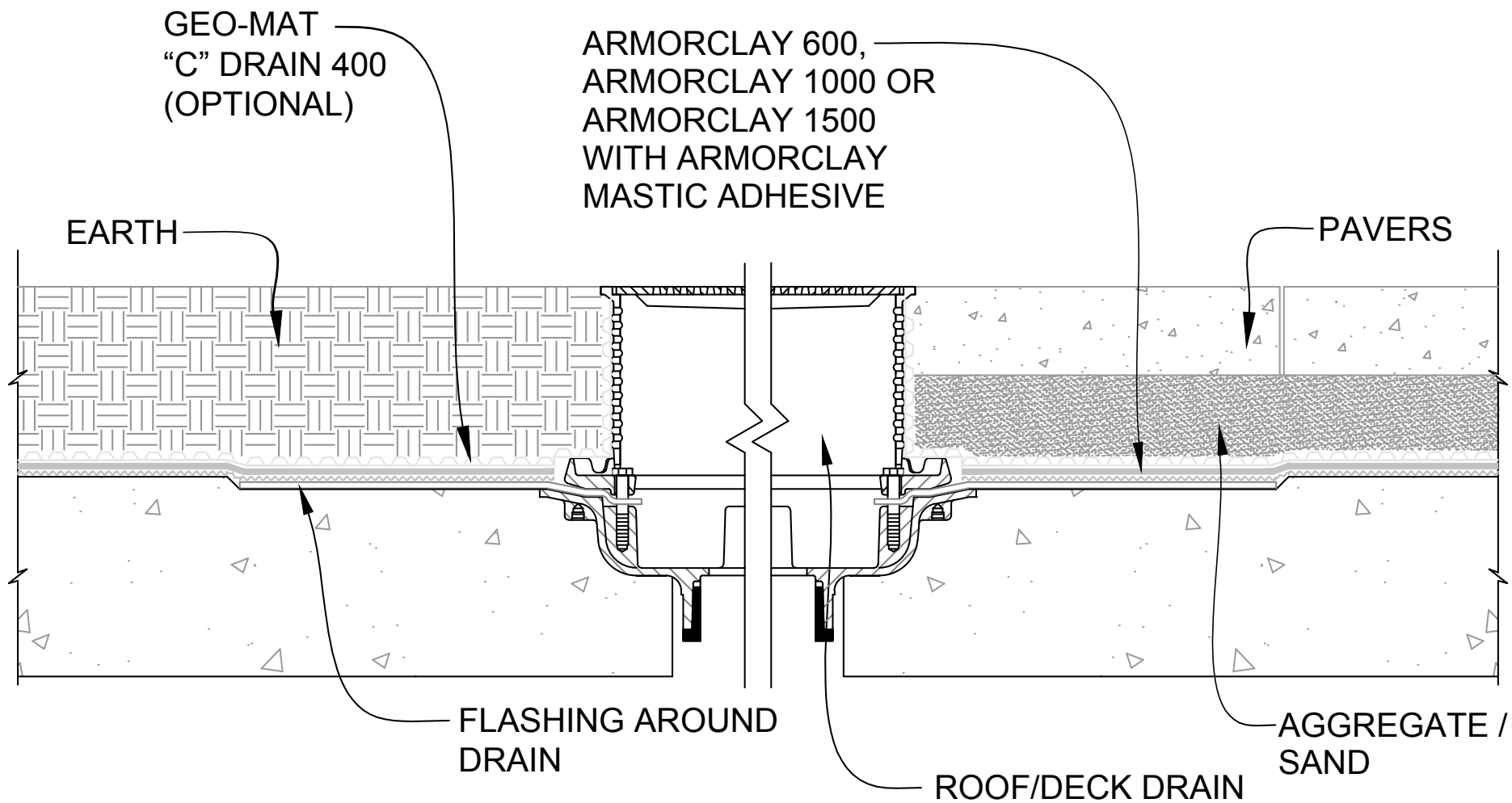
SEE OPTIONS #1, #2, #3



B-12

**GRADE LINE
TERMINATION**

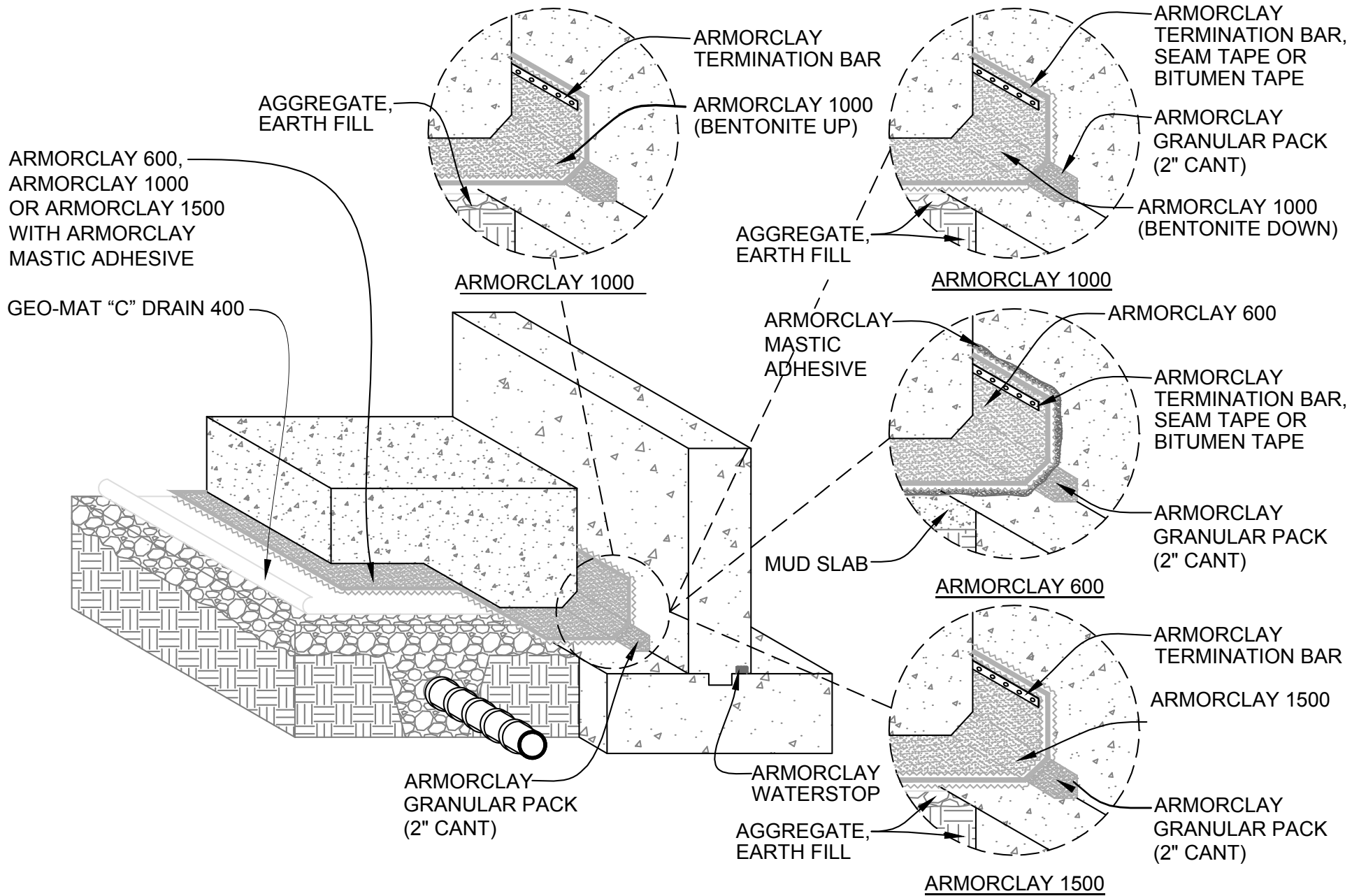




B-13

TYPICAL DRAIN DETAIL

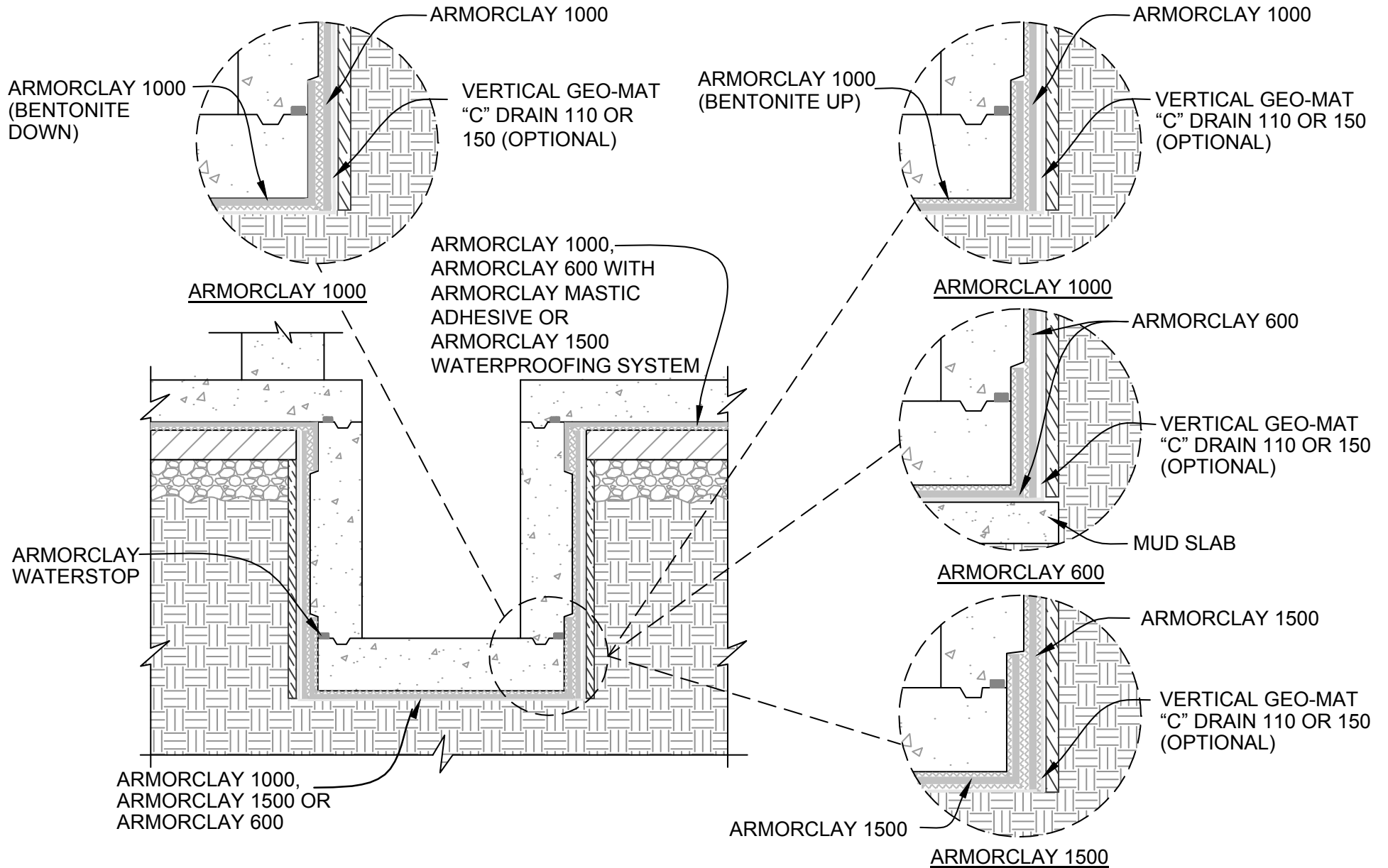




B-14

FLOOR TO WALL TRANSITION
WITH BELOW FLOOR DRAINAGE



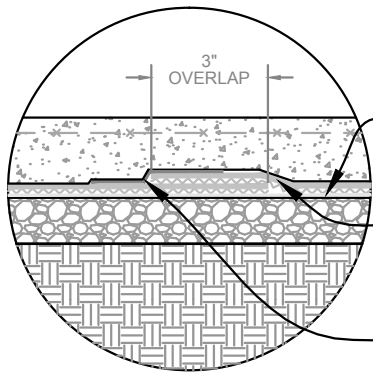


B-15

ELEVATOR PIT CROSS SECTION DETAIL
 ALL SEAMS ADHERABLE WITH ARMORCLAY MASTIC ADHESIVE



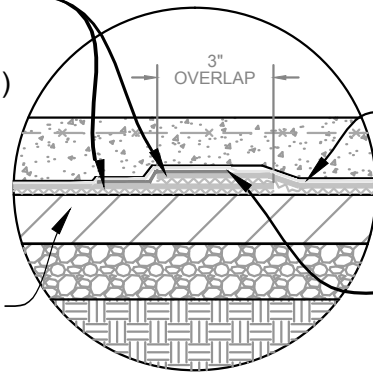
ARMORCLAY 1000



TYPICAL OVERLAP

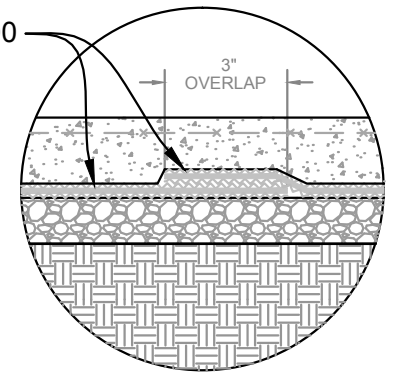
ARMORCLAY 600 WITH ARMORCLAY MASTIC ADHESIVE (BENTONITE DOWN)

ARMORCLAY 600

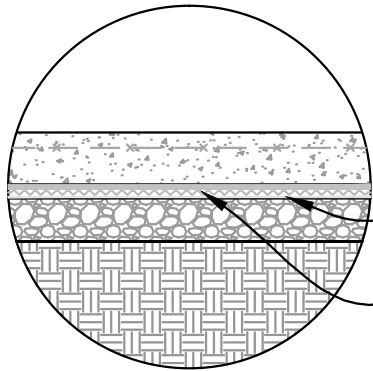


TYPICAL OVERLAP

ARMORCLAY 1500

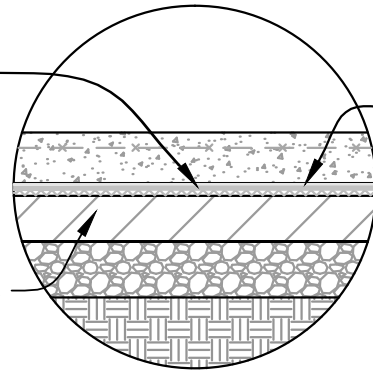


TYPICAL OVERLAP



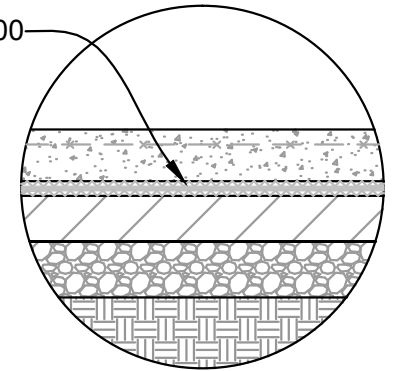
TYPICAL UNDER FLOOR

ARMORCLAY 600 WITH ARMORCLAY MASTIC ADHESIVE (BENTONITE DOWN)

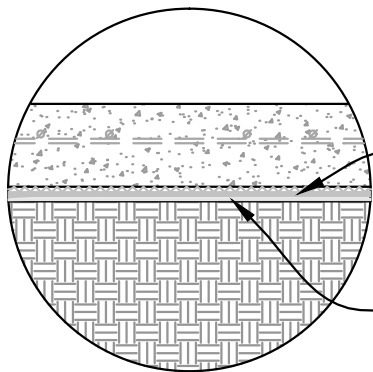


WITH MUD SLAB

ARMORCLAY 1500

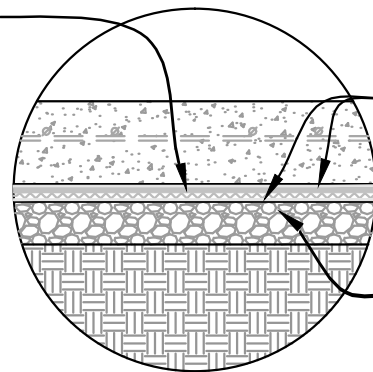


WITH MUD SLAB



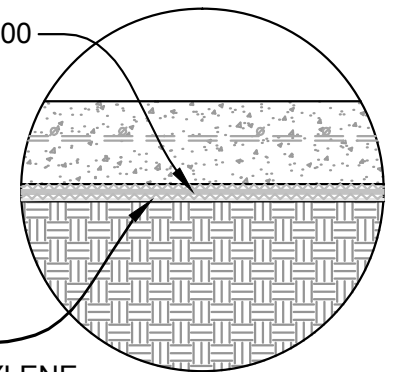
WITHOUT MUD SLAB

ARMORCLAY 600 WITH ARMORCLAY MASTIC ADHESIVE (BENTONITE DOWN)



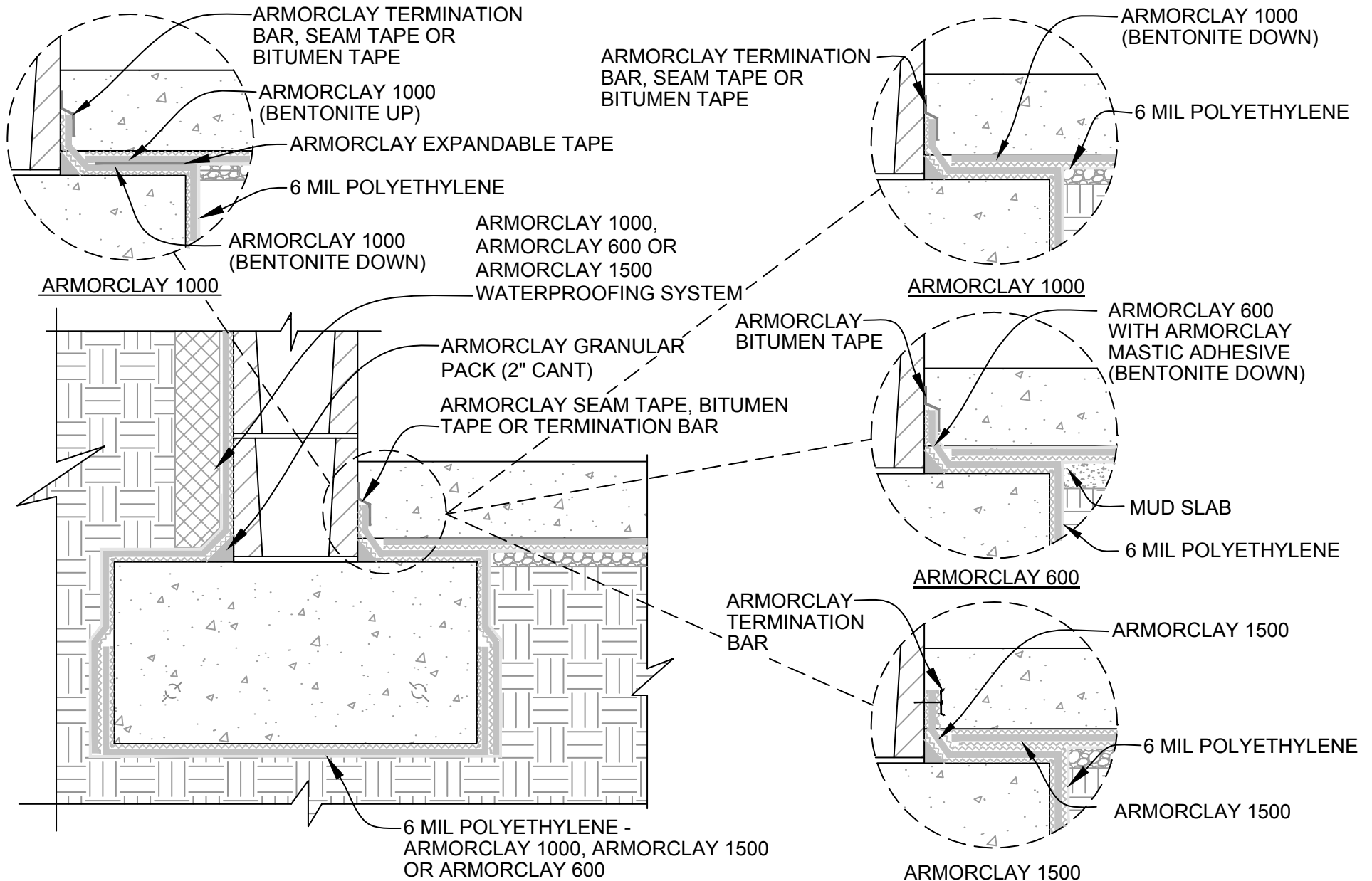
WITHOUT MUD SLAB / PROTECTION SHEET

ARMORCLAY 1500



6 MIL POLYETHYLENE (TYPICAL)

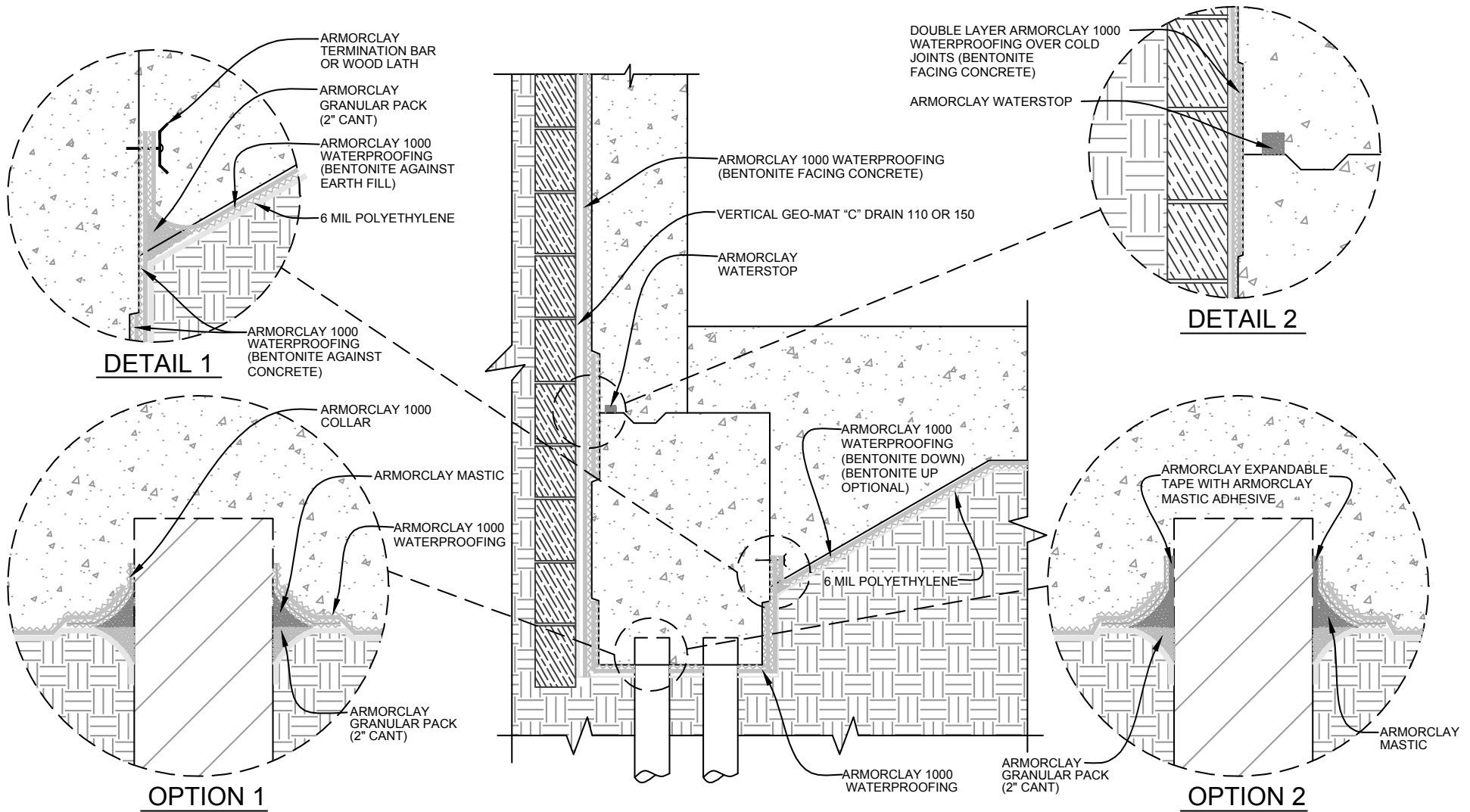
WITHOUT MUD SLAB



B-17

FOOTING TO FLOOR TRANSITION
CROSS SECTION



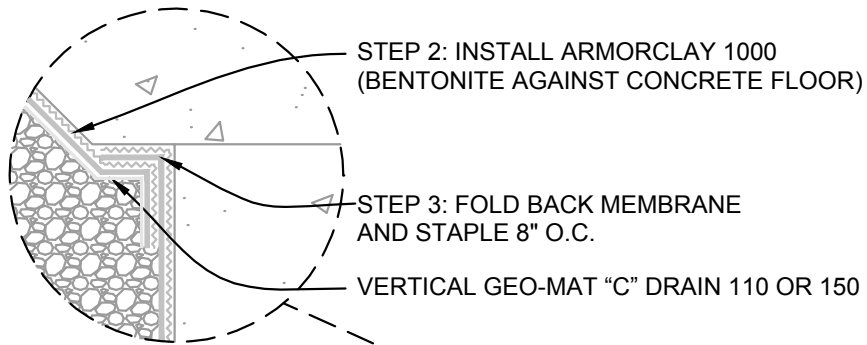


B-18

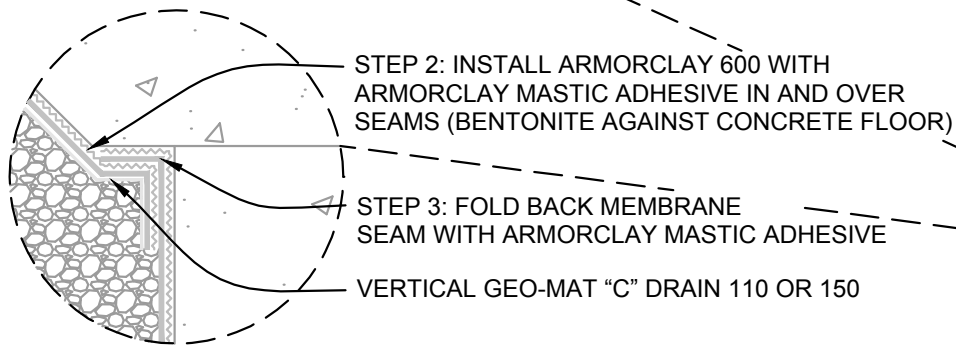
WATERPROOFING AROUND EXTERIOR PILECAPS

NOTE: ARMORCLAY 600 AND ARMORCLAY 1500 ALTERNATIVE DRAWINGS ALSO AVAILABLE

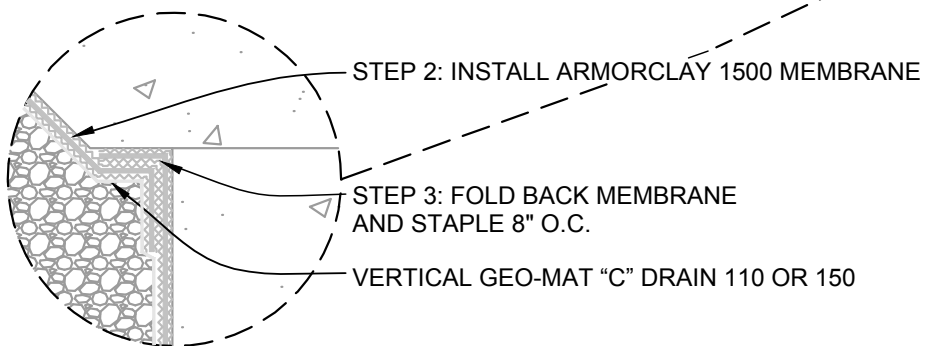




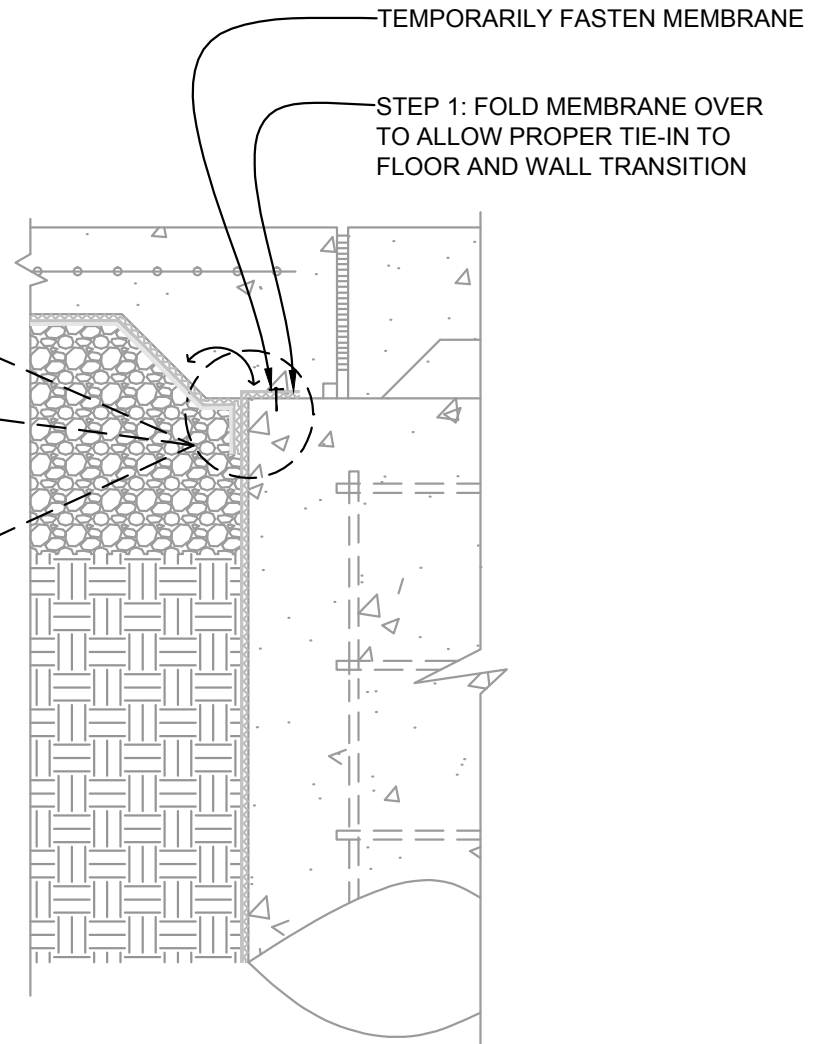
ARMORCLAY 1000

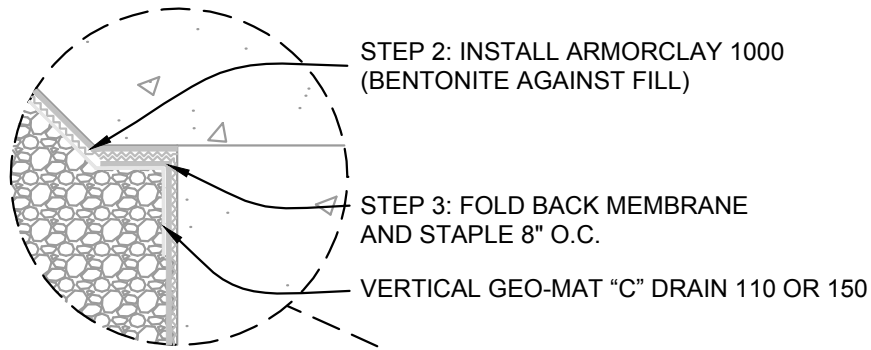


ARMORCLAY 600



ARMORCLAY 1500



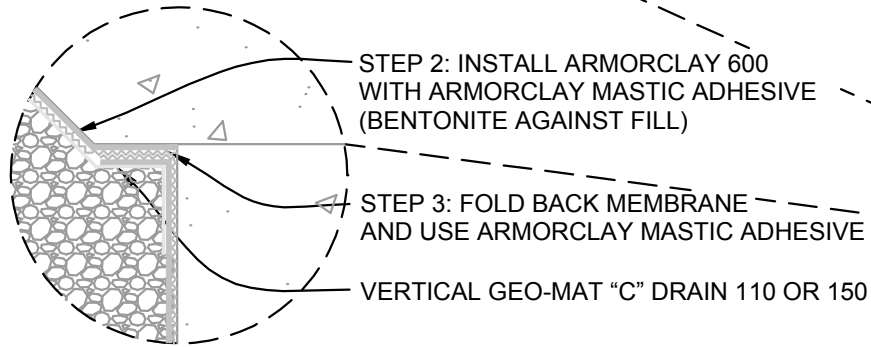


STEP 2: INSTALL ARMORCLAY 1000
(BENTONITE AGAINST FILL)

STEP 3: FOLD BACK MEMBRANE
AND STAPLE 8" O.C.

VERTICAL GEO-MAT "C" DRAIN 110 OR 150

ARMORCLAY 1000

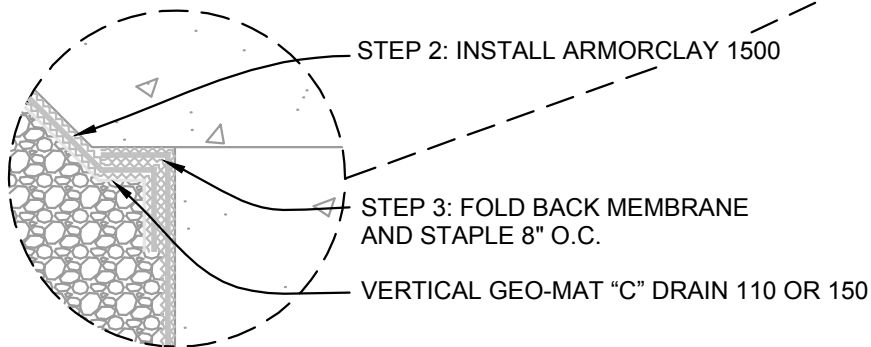


STEP 2: INSTALL ARMORCLAY 600
WITH ARMORCLAY MASTIC ADHESIVE
(BENTONITE AGAINST FILL)

STEP 3: FOLD BACK MEMBRANE
AND USE ARMORCLAY MASTIC ADHESIVE

VERTICAL GEO-MAT "C" DRAIN 110 OR 150

ARMORCLAY 600

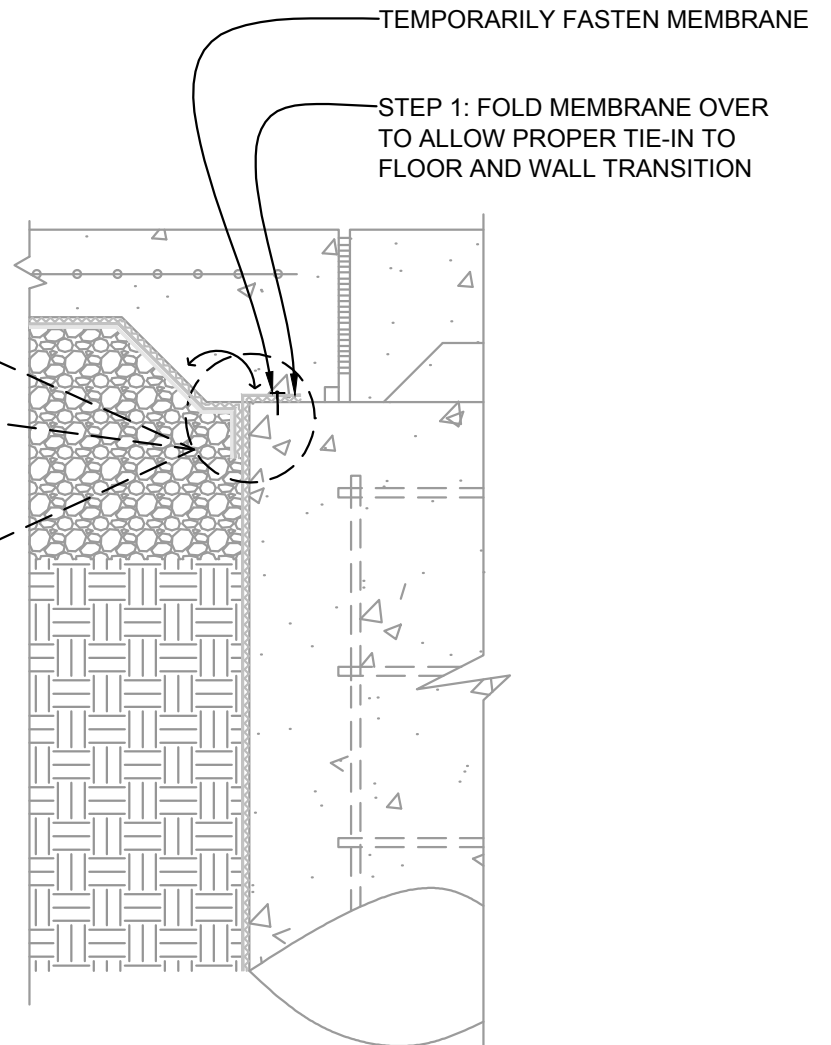


STEP 2: INSTALL ARMORCLAY 1500

STEP 3: FOLD BACK MEMBRANE
AND STAPLE 8" O.C.

VERTICAL GEO-MAT "C" DRAIN 110 OR 150

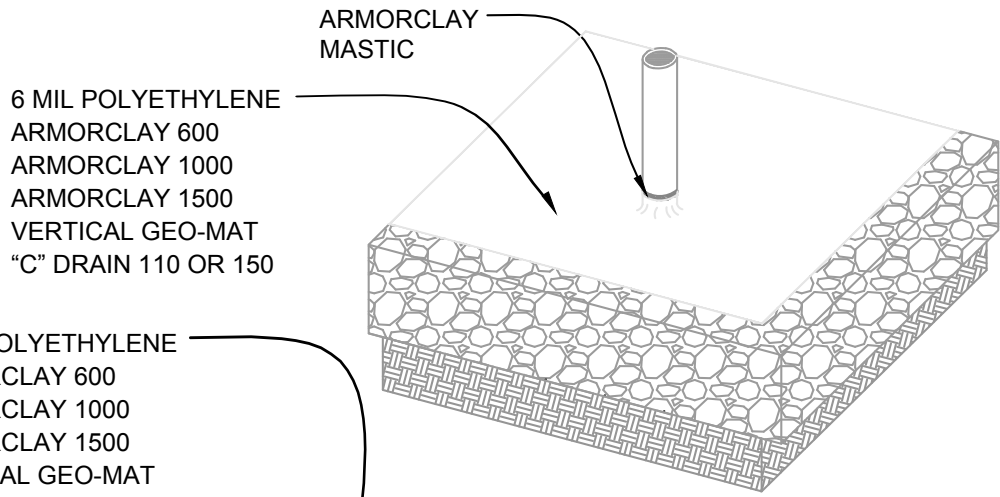
ARMORCLAY 1500



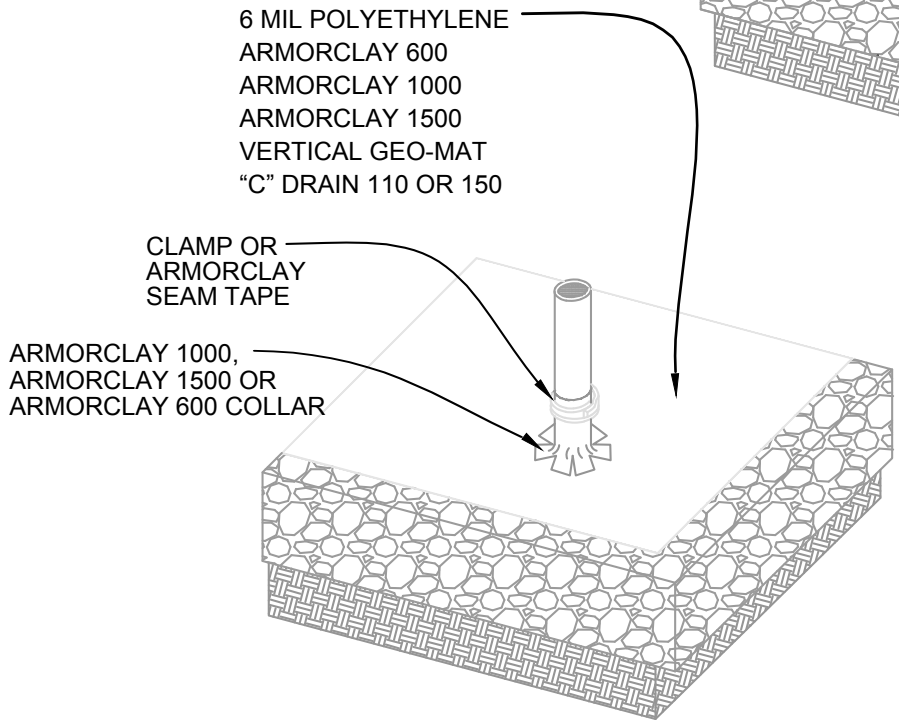
B-20

**BENTONITE DOWN / MEMBRANE UP
WATERPROOFING PILECAP BELOW FOOTING**

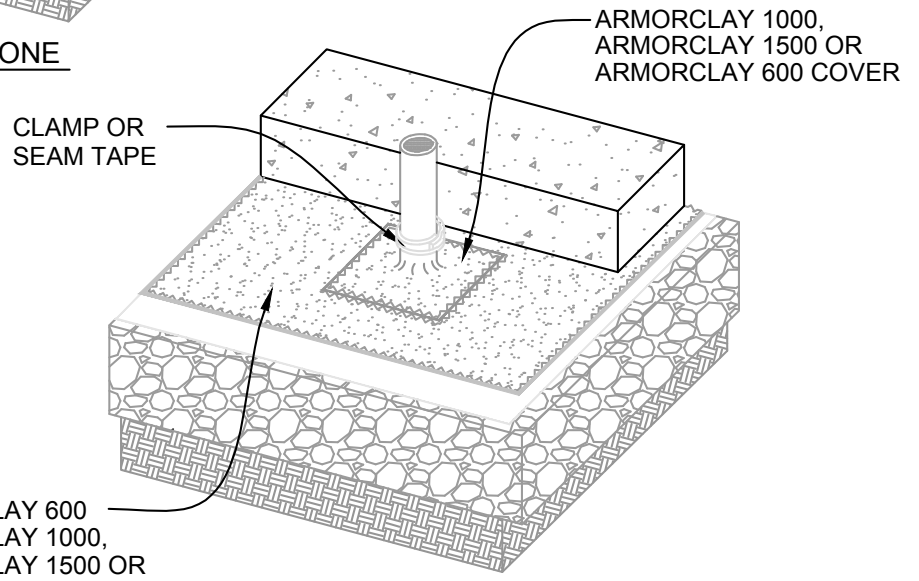




STEP ONE



STEP TWO

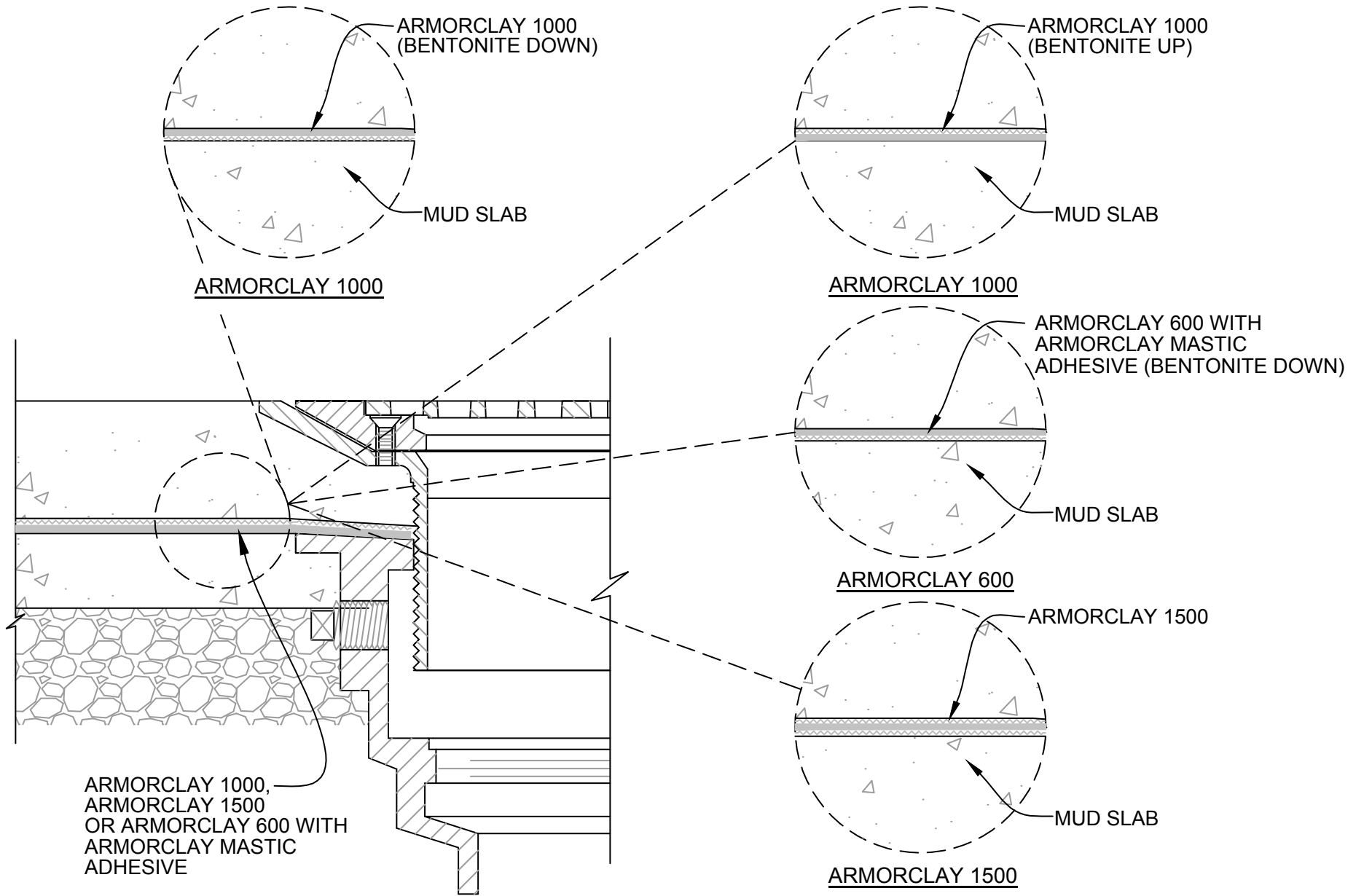


STEP THREE

B-21

UNDER SLAB
PIPE PENETRATION (TYPICAL)





B-22

TYPICAL DRAIN DETAIL

