



**WATERPROOFING &  
BUILDING PRODUCTS**



**RESIDENTIAL  
PRODUCTS**



**COMMERCIAL  
PRODUCTS**



**RESIDENTIAL**

**COMMERCIAL**

# **RESIDENTIAL & COMMERCIAL PRODUCTS CATALOG**



**Taking the "LEED" on a greener approach  
to Residential and Commercial Foundation  
Waterproofing, Drainage, Insulation and  
Building Products**

# Mar-flex Waterproofing Products

## Product Catalog

### Table of Contents/Water-Based Products Expiration Date/Return Policy

#### Residential & Commercial

Mar-flex Residential 3 Step System.....	3
Residential Dampproofing.....	4
Residential Fusion Dampproofing & Waterproofing Products.....	5
Commercial Dampproofing/Vapor/Air Barriers/ Accessories.....	6-7
Residential Waterproofing / Mastic .....	8-11
Commercial/Residential Masonry Sealer.....	12
Commercial Waterproofing (Spray,Sheet,Bentonite).....	11-16
Commercial/Residential Drainage & Insulation Boards .....	17-22
Commercial/Residential Drainage Tile.....	23
Commercial Drainage Mats .....	24
Residential Egress Window Wells/ Standard Window Wells.....	25-27

#### Concrete Products

Control Joint Systems/Foundation Vents .....	28
Crack Injection Products .....	29-31

#### Equipment / Accessories

Material Handling/Spray Accessories & Kits/ Tips & Hoses .....	32-39
--	-------

#### Contractor Supplies

Safety & Protective Equipment .....	40-41
-------------------------------------	-------

#### Freight Information/Credit

Terms/Return Policy.....	42
--------------------------	----

Order Form.....	43
-----------------	----

#### Expiration Date

##### (Water-Based Products)

The date is meant to be a "best when used by" date to aid you in rotating stock. The (6) month shelf life is a general guideline and is not meant to imply that the material is not saleable at this date. If the product is stored according to our specifications and has exceeded the 6 month guideline, it should be visually inspected to ensure its saleable condition.

##### Batch Dating:

The first two numbers represent product type.

- 01 Mar-flex 5000 WB
- 02 QuickSeal WB
- 03 Basix WB
- 04 Dampproofing WB
- 10 FUSION UV WB
- 13 DampFUSION WB
- 14 LiteFUSION WB

The last six numbers represent the date packaged:

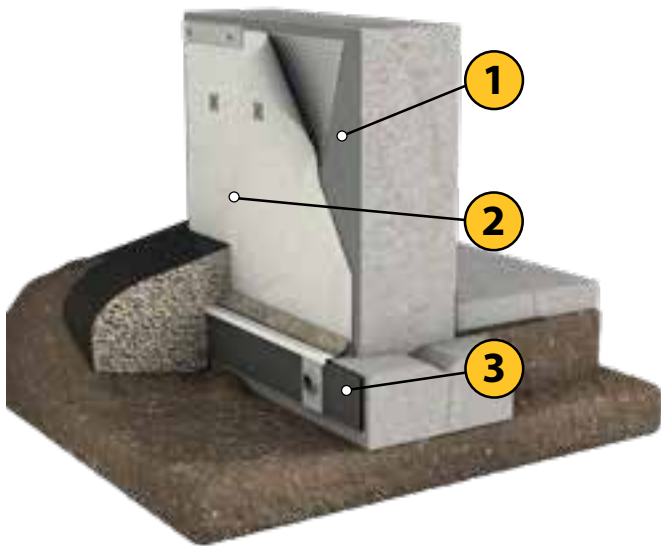
Example: 02071516 (02 - 07/15/16) represents QuickSeal packaged on July 15, 2016

#### Return Policy

We will normally accept returned products under the following conditions:

- Prior written authorization including RGA number from Mar-flex is obtained
- The products are returned within 30 days from the original date of the invoice
- The products are in new and saleable condition
- A 25% restocking fee plus freight will be added on all returns
- Returns not accepted on electrical replacement parts

## The Mar-flex Residential 3 Step System



### Waterproofing: The Mar-flex 3-Step System

Mar-flex developed its 3-step system to protect the poured foundation wall of a home and eliminate the devastating effects of water – including mold and mildew. The result? Decades of dry, worry-free lower level living.

- 1 Waterproofing membrane seals wall**  
First, a highly-impermeable membrane is applied to the exterior concrete walls. This specially formulated spray coating is the first line of defense in sealing water out of the basement.
- 2 Drainage board protects and insulates wall**  
After the membrane is applied, a high-quality drainage board is installed to protect the coating, while helping channel water away from the home's foundation.
- 3 Drainage tile transports water away from foundation**  
Finally, drainage tile is installed along the footer/foundation walls to channel water into the sump/drainage system and transport water away from the basement.

1



Dampproofing

Basix™

QuickSeal™

Mar-Flex 5000™



TopGun Membrane

2



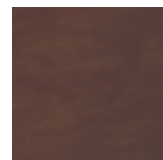
TopGun Drainage & Insulation Board



ShockWave



Geo-Mat/  
Geo-Mat PLUS



Drain & Dry Board with Ecos Technology

3



Mar-flex Geo Drain Tiles



Waterproofing and Building Products



# Residential

## Foundation Dampproofing

### Dampproofing & Foundation Coating Water-Based



**Mar-flex Dampproofing Water Based** is a heavy-bodied asphalt emulsion protective coating used when dampproofing is required. It forms a smooth, tough, almost rubber-like film when dry. Mar-flex Dampproofing has moderately good resistance to temperature changes, is flexible at low temperatures, has excellent weatherability and resists water penetration.

The durable film bonds to most clean, dry and firm surfaces. All surfaces to be coated must be clean, dry, sound; free from oil, grease, rust, scale, loose paint and dirt. Mar-flex Dampproofing is compatible with Mar-flex Drainage and Insulation Boards.

#### Application

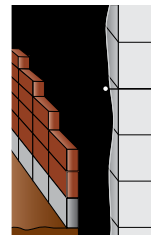
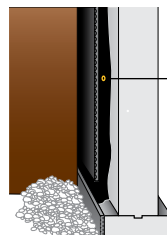
Application will depend on condition and porosity of surface to be coated. Dampproofing applications should be made at a rate of approximately 2 gallons/100 ft.<sup>2</sup>. This product should be applied as received. Keep container covered when not in use. Material should be spray applied with a suitable airless spray equipment. Application may also be accomplished manually with a brush or roller. See installation instructions for complete details.

#### Code Compliance

Mar-flex Dampproofing complies with ASTM D 1227-95, Type 2, Class 1 and ASTM D 1187, Type 1.

#### Uses

Mar-flex Dampproofing is recommended for dampproofing below-grade, vertical basement walls of poured concrete or unit masonry construction. It serves as a vapor barrier on the exterior face of the interior walls of above-grade exterior masonry cavity walls. It also excels as a utility coating on posts, pilings and other metal surfaces set into the ground.



BGD-36120  
5 Gallon Bucket



BGD-36125  
55 Gallon Drum  
Each or 4/Pallet



BGD-36123  
330 Gallon Tote



BGD-36129  
6,000 Gallon Bulk

### Dampproofing & Foundation Coating Solvent-Based ~~DISCONTINUED 6-2022~~

**Mar-flex Dampproofing Solvent Based** is a heavy-bodied cutback asphalt protective coating used when lower temperature application dampproofing is required. It forms a smooth, tough, almost rubber-like film when dry. Mar-flex Dampproofing has moderately good resistance to temperature changes, is flexible at low temperatures, has excellent weatherability and resists water penetration. The durable film bonds to most clean, dry and firm surfaces. All surfaces to be coated must be clean, dry, sound; free from oil, grease, rust, scale, loose paint and dirt. Mar-flex Dampproofing & Foundation Coating is compatible with Mar-flex Drainage and Insulation Boards.

#### Uses

Mar-flex Dampproofing is recommended for dampproofing below-grade, vertical basement walls of poured concrete or unit masonry construction. It serves as a vapor barrier on the exterior face of the interior walls of above-grade exterior masonry cavity walls. It also excels as a utility coating on posts, pilings and other metal surfaces set into the ground.

#### Application

Application will depend on condition and porosity of surface to be coated. Dampproofing applications should be made at a rate of approximately 2 gallons per 100 ft.<sup>2</sup>. This product should be applied as received. Keep container covered when not in use. Material should be spray applied with a suitable airless spray equipment. Application may also be accomplished manually with a brush or roller. See installation instructions for complete details.



BGD-36115  
55 Gallon Drum  
Each or 4/Pallet



BGD-36118  
6,000 Gallon Bulk

### DampFUSION™ Water Based Dampproofing



#### Mar-Flex DampFUSION Water Based

Mar-flex DampFUSION is an excellent water-based acrylic dampproofing membrane approved for masonry, block, pre-cast and poured concrete wall foundations. It will stop water vapor and protect against leaks.

Mar-flex DampFUSION is a spray-on membrane, so it dries as a seamless, monolithic coating. It can be applied to pre-existing damp walls and the top of the foundation wall. It has no odor and will dry to a gray color to blend with the color of concrete. DampFUSION is compatible with Mar-flex drainage and insulation boards.



RWD-01-5  
5 Gallon Bucket



RWD-01-55  
55 Gallon Drum  
Each or 4/Pallet

Dampproofing is often confused with waterproofing. Dampproofing simply slows down water penetration but does not completely waterproof a foundation. It is generally very effective in stopping water vapor transmission.

### LiteFUSION™ Water Based Waterproofing

#### LiteFUSION Water Based

Mar-flex LiteFUSION is an economical water-based acrylic waterproofing membrane for use when hydrostatic pressure exists. It has the ability to bridge cracks that might later develop in a foundation, and can protect from the dangers of moisture, which can cause mold and mildew.

Mar-flex LiteFUSION is specifically designed for waterproofing pre-cast, poured and masonry foundation walls. Mar-flex Lite FUSION is a spray-on membrane, so it dries as a seamless, monolithic coating. It has no odor and will dry to a gray color to blend with the color of concrete. LiteFUSION is compatible with Mar-flex drainage and insulation boards.

Unlike dampproofing, a waterproofing membrane is designed to stop water infiltration and be extremely effective when applied on the exterior of a foundation system.



RWW-01-5  
5 Gallon Bucket



RWW-01-55  
55 Gallon Drum  
Each or 4/Pallet

### FUSION UV™ Water Based Waterproofing

#### MEMBRANE/combined with BOARD gives you a longer WARRANTY\*

Fusion UV	None	20 years
Fusion UV	TopGun Board	Limited Lifetime
Fusion UV	Shockwave	Limited Lifetime
Fusion UV	GeoMat+	Limited Lifetime
Fusion UV	Drain & Dry	Limited Lifetime

\* New Residential Construction

#### Fusion UV™ Water Based

Fusion UV™ is a 100% virgin polymer waterproofing membrane that can be applied to any foundation wall. Its formulation sprays easily, producing a flexible, seamless seal that resists freeze-thaw cycles. Fusion UV™ is available in UV resistant gray.

#### An industry-leading warranty

Use the chart below to select the system and warranty that best meets your poured wall waterproofing needs. Complete warranty and details available upon request.



RWW-02-05  
5 Gallon Bucket



RWW-02-55  
55 Gallon Drum  
Each or 4/Pallet



ICC Code Compliant



Waterproofing  
and Building  
Products

# Commercial

## Exterior Commercial Vapor Barrier/Dampproofing

### ArmorBlock Vapor Barrier/Dampproofing



- Water-Based – CMB-36120 (5gal)**
- CMB-36125 (55gal)**
- CMB-36127 (330gal)**
- CMB-36129 (6000gal bulk)**

ArmorBlock 361 WB is a commercial grade heavy bodied emulsion asphalt protective coating used when a VaporBarrier/Dampproofing is required.



#### Packaging

ArmorBlock 361 WB is available in 5-Gallon Buckets & 55-Gallon Drums, 330gal totes and 6000gal bulk.

#### Uses

ArmorBlock 361 WB membrane is recommended for dampproofing below-grade basement walls of poured concrete or unit masonry construction. It serves as a vapor retarder on the exterior face of the interior walls of above-grade exterior masonry cavity walls. It excels as a utility coating on posts, pilings and other metal surfaces set into the ground.

ArmorBlock 361 WB can be spray, brush or roll applied to any vertical or horizontal surface.

### Accessories

#### ArmorBlock

#### ArmorMastic 200 Solvent-Based – ARMT-00200

ArmorMastic 200 is a heavy-bodied trowel grade coating. It is excellent for the patching tie holes, filling honeycombed areas in both rough and smooth masonry surfaces prior to application of a variety of Mar-flex Commercial Products.



#### Uses

Mar-flex's ArmorMastic 200 is the most versatile heavy-bodied trowel grade coating available. This product is excellent for patching tie holes, filling in honeycombed areas in both rough and smooth masonry surfaces, and surface flaws. ArmorMastic200 remains flexible during freeze-thaw cycles, and can be applied during any season. You can patch all outside below grade wall ties with AM200.

Can be used with a variety of Mar-flex Commercial Products including ArmorSheet, ArmorBlock 361 and ArmorMembrane 363 and the full Armor Series line.

#### Armor 700 Solvent-Based Primer – ASBP-70005

Armor 700 SB Primer is a solvent-based penetration asphalt primer used for the preparation of all types of surfaces previous to the application of sheet membranes and hot or cold asphalt where application temperatures of 20°F or more are present.

#### Uses

Designed for use as a prime coat for concrete, gypsum, masonry, brick and metal surfaces over which waterproofing asphaltic products are to be applied. This solution readily penetrates pores and seals dusty masonry surfaces to provide a firm base for such applications.



#### Armor 710 Water-Based Primer – AWBP-70105

The Mar-flex 710 WB Primer is water-based polymer modified primer for self-adhering membranes. The 710 WB Primer penetrates pores and dries fast to provide a tacky, firm substrate for adhesion of the membranes.

#### Uses

The 710 WB Primer is suitable for use over asphalt, wood, plywood, gypsum board and concrete surfaces.



# Armor Air Barrier



**CWAB-12005 (5gal)**  
**CWAB-120055 (55gal)**

1200p Liquid Applied Air Barrier

1200p Vapor Permeable, water-based, Liquid Applied AirBarrier is an acrylic membrane that cures to form a seamless membrane around the building envelope.

**Uses**

1200p is intended as a breathable air barrier for all types of cavity wall construction. condensation on in the wall assembly.



- Low Odor (water-based)
- Breathable - high water vapor-permeance
- Seals around penetrations and brick ties
- UV resistant

### Accessories ArmorAirBarrier

**ArmorFlash** is designed to be used in conjunction with all Armor Series products.

CETS-0475 (4" x 75') CETS-1875 (18" x 75')  
CETS-0675 (6" x 75') CETS-2475 (24" x 75')  
CETS-1275 (12" x 75')

Rolls per box varies per size  
4"-9 rolls, 6"-6 rolls, 12"-3 rolls, 18"-2 rolls, 24"- 1 roll

**Uses**

ArmorFlash Transition Strips are designed to be used as a surface transition strip with AirBarrier Assemblies.



**Armor 1200 Primer Water-Based**  
CWPR-12205



Questions?  
Call Mar-flex Today!  
**800 498 1411**



# Residential

## Waterproofing/Mastic

### Basix WB & SB Waterproofing/All Season Mastic

#### Basix WB & SB™

Basix Water Base & Solvent Base™ Waterproofing is a seamless modified polymer waterproofing membrane. Basix WB & SB offers the new homeowner an affordable alternative to upgrade from entry level waterproofing. It also provides them with peace of mind that their biggest investment is protected and they will have a safe and dry living environment.

#### Uses

Basix WB & SB are recommended for new construction waterproofing of all below-grade basement walls or poured concrete or unit masonry construction.

Mar-flex Basix WB & SB can be used as a spray only or as part of a system.

#### Two System Components

Mar-flex allows you to customize your waterproofing system by matching the right coating to the right board.

#### For drainage plus R-value:

TopGun Board, Shockwave 1' or 2' Boards, or Drain & Dry,

#### For drainage with no R-value:

Geo-Mat™

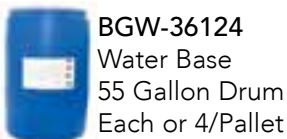


#### 362 All Season Mastic

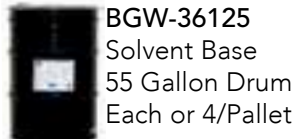
362 All Season Mastic is a heavy bodied trowel grade coating. It is excellent for patching tie holes, filling in honeycombed areas in both rough and smooth masonry surfaces.

- Remains flexible during freeze-thaw cycles
- Can be used during any season
- Ready to use
- Color – Black
- Consistency – Rubber coating
- ASTM D-4586 Type I
- ASTM D-3409

Actual coverage rate will vary depending on the thickness of product applied. All surfaces should be free from oil, grease, rust and any other debris. Can be trowel or hand applied over wall ties, honeycombs or any surface flaw. Remove below grade wall ties inside the basement and out. Patch all outside below grade wall ties with 362 Mastic.



**BGW-36124**  
Water Base  
55 Gallon Drum  
Each or 4/Pallet



**BGW-36125**  
Solvent Base  
55 Gallon Drum  
Each or 4/Pallet



**BGW-36123**  
Water Base  
330 Gallon Tote



**BGW-36129 - Water Base**  
6000 Gallon Bulk

**BGM-36205**  
5 Gallon Bucket

**BGM-36201**  
1 Gallon Pail  
(6 gal pack minimum)





## Mar-flex QuickSeal™ Water Based Emulsion Waterproofing



### QuickSeal™ Water Based

An affordable upgrade from entry level waterproofing, QuickSeal™ is a modified polymer emulsion membrane that can be applied to any foundation wall. Its special formulation produces a seal that prevents water from seeping through the walls.

### An industry-leading warranty

Use the chart below to select the system and warranty that best meets your poured wall waterproofing needs. Complete warranty and details available upon request.

MEMBRANE/combined with BOARD gives you a longer WARRANTY*		
QuickSeal	None	10 years
QuickSeal	TopGun Board*	20 years
QuickSeal	Shockwave	20 years
QuickSeal	GeoMat+	30 years
QuickSeal	Drain & Dry	20 years

\* New Residential Construction

QuickSeal's special formulation produces a seal that prevents water from seeping through the walls.



**BGW-36134**  
55 Gallon Drum  
Each or 4/Pallet



**BGW-36133**  
330 Gallon Tote



**BGW-36139**  
6,000 Gallon Bulk

## Mar-flex QuickSeal™ Solvent Based Waterproofing

### QuickSeal™ Solvent Based

An affordable upgrade from entry level waterproofing, QuickSeal™ is a modified polymer membrane that can be applied to any concrete foundation wall. Its special formulation produces a seal that prevents water from seeping through the walls.

### An industry-leading warranty

Use the chart above to select the system and warranty that best meets your poured wall waterproofing needs. Complete warranty and details available upon request.



**BGW-36135**  
55 Gallon Drum  
Each or 4/Pallet



ICC Code Compliant



Waterproofing  
and Building  
Products

### Mar-flex 5000™ Water Based Emulsion



#### Mar-flex 5000™ Water Based

Years in development, this heavy-duty, elastomeric emulsion membrane can be applied to any wall foundation. Its special formulation sprays easily and predictably, producing a viscous, flexible, seamless seal that resists freeze-thaw cycles. The result? Homeowners no longer have to put up with wet basements.

#### An industry-leading warranty

Use the chart below to select the system and warranty that best meets your poured wall waterproofing needs. Complete warranty and details available upon request.

MEMBRANE/combined with BOARD	gives you a longer WARRANTY*		THICKNESS
Mar-flex 5000	None	15 years	
Mar-flex 5000	TopGun Board*	40 years 50 years 60 years	.75" 1.1875" 2.375"
	*Lifetime with TopGun Membrane		
Mar-flex 5000	Shockwave	50 years 60 years	1" 2"
Mar-flex 5000	GeoMat+	40 years	
Mar-flex 5000	Drain & Dry	40 years 50 years 60 years	.75" 1.1875" 2.375"

\* New Residential Construction



ICC Code Compliant



BGW-36152  
5 Gallon Bucket



BGW-36154  
55 Gallon Drum  
Each or 4/Pallet



BGW-36153  
330 Gallon Tote



BGW-36159  
6,000 Gallon Bulk

### Mar-flex 5000™ Solvent Based

#### Mar-flex 5000™ Solvent Based

Years in development, this heavy-duty, elastomeric membrane can be applied to any concrete foundation wall. Its special formulation sprays easily and predictably, producing a viscous, flexible, seamless seal that resists freeze-thaw cycles. The result? Homeowners no longer have to put up with wet basements.

#### An industry-leading warranty

Use the chart above to select the system and warranty that best meets your poured wall waterproofing needs. Complete warranty and details available upon request.



BGW-36155  
55 Gallon Drum  
Each or 4/Pallet

### Mar-flex 5000™ Solvent Based Trowel Grade

#### Mar-flex 5000 Solvent Based Trowel Grade

A single component, rubber reinforced asphalt that forms an elastomeric waterproof coating as well as an air barrier. The dried film cures to a tough 40-mil flexible finish and will resist variations in temperature and weather. When applied to interior above grade cavity wall structures, the protective coating helps to control moisture and inhibit air leakage in buildings as specified in several building codes. Mar-flex 5000 SB Trowel Grade has excellent resistance to acids, alkalis and salts in the soil and will not deteriorate.



BGT-36515  
5 Gallon Bucket

Coverage approximately 10 square feet per gallon.

#### Uses

Mar-flex 5000 SB Trowel Grade is used as a waterproof coating on exterior above or below grade surfaces such as masonry, spray polyurethane foam, wood, stone, brick and concrete. It can also be used as an air barrier/vapor barrier when applied in exterior/interior above grade assemblies.

### TopGun Water-Based Waterproofing Membrane



#### Description

The Mar-flex TopGun Water-Based Elastomeric Emulsion Exterior Below-Grade Waterproofing Membranes are tested and proven membranes that can be applied over almost any clean, dry, sound substrate. It features our highest Residential "Limited-Lifetime" warranty and is a waterproofing industry product leader.

#### Uses

TopGun WB is recommended for new construction waterproofing of all below-grade basement walls of poured concrete or ICF walls. TopGun WB can be used as a membrane spray only or as part of a system using the new TopGun Drainage Board.

#### Leeds Data

Mar-flex TopGun WB membrane is considered a GREEN product and can be used toward LEEDS building credits.



**BGW-36954**  
55 Gallon Drum  
Each or 4/Pallet



**BGW-36953**  
330 Gallon Tote



**BGW-36959**  
6,000 Gallon Bulk

Mar-Flex TopGun Water-Based Spec Sheet		
Properties	Method	Results
Color		Black
Total Solids		78%
Application Method		Spray
Application Range		20° to 130° F
Elongation @ 73.4° F	(ASTM D-412 Method A)	4485% min.
Crack Bridging Ability	(ASTM C-836)	10 cycles; no failure
Wind Driven Rain Resistance to Hydrostatic Head Pressure	(Federal Spec TT-C-555B, Par 4.4.7 ASTM D5385)	No Water Infiltration Passed @6psi/13.9ft of head press.
Total Cure Time		24 hrs.
Weight/Gallon		7.5 lbs,
Coverage Rate		20-25-sqft/gal
Tensile Strength	(ASTM-C-719)	48 psi min.
Water Vapor Permeance/ Transmission	(ASTM E-96)	0.35 perms (g/h-sq.ft.-in.Hg) 0.11 (grains/sq.ft./h)
Mold Growth/Bacterial Attack		No Degradation
Membrane		60 mil wet thickness
Adhesion to Concrete		No Adhesion Loss

\*Commercial Warranties Available



# Commercial/Residential

## Commercial Grade Fluid Applied Waterproofing/Masonry Sealer

### ArmorMembrane

#### ArmorMembrane™ 363 WB

**Water-Based - BGC-36312 (5gal)  
BGC-36314 (55gal)  
BGC-36316 (330gal)**

ArmorMembrane 363 Water-Based Commercial Grade Waterproofing is a tested and proven membrane for commercial applications.

##### Features / Benefits

- Creates a seamless membrane
- Effectively coats rough and porous surfaces
- Safe, non-flammable and low odor
- Seals around fasteners



#### ArmorMembrane™ 363 SB

**Solvent-Based - BGC-36315 (55gal)**

ArmorMembrane 363 Solvent-Based Waterproofing is a tested and proven membrane for commercial applications.

##### Features / Benefits

- Creates a seamless membrane
- Effectively coats rough and porous surfaces
- Seals around fasteners



#### Accessories ArmorMembrane

##### ArmorMastic 200 Solvent-Based - ARMT-00200

ArmorMastic 200 is a heavy-bodied trowel grade coating. It is excellent for patching tie holes, filling in honeycombed areas in both rough and smooth masonry surfaces prior to application of a variety of Mar-flex Commercial Products.

##### Uses

ArmorMastic 200 is the most versatile heavy-bodied trowel grade coating available. This product is excellent for patching tie holes, filling in honeycombed areas in both rough and smooth masonry surfaces, and surface flaws. ArmorMastic 200 remains flexible during freeze-thaw cycles, and can be applied during any season. You can patch all outside below grade wall ties with AM200.



Can be used with a variety of Mar-flex Commercial Products including ArmorSheet, ArmorBlock 361 and ArmorMembrane 363 and the full Armor Series line.

### Armor Masonry Sealer Commercial/Residential

#### ArmorMasonry Sealer™

##### ArmorMasonry Sealer – CWSS-0005

Mar-flex ArmorMasonry Sealer is a waterbase solution of Potassium Methyl Silanetriolate, developed to treat a wide range of masonry and stone surfaces and provide long lasting water repellency.

##### Uses

Imparts water repellency to a wide variety of substances by reducing water absorption into the substrate. Reduced spalling due to freeze-thaw and efflorescence, thereby increasing the life of the substrate. It's colorless and non-yellowing protection preserves the natural appearance of the substrate. Penetrating and breathable within a Low VOC formula. Nonflammable.

**Packaging:**  
5-Gallon Bucket

##### ADVANTAGES:

- Water-based, low odor
- Ready to use
- V.O.C. Compliant
- Excellent beading for improved aesthetics
- Will not change the traction or skid resistance of a surface
- No color change; will not darken surface
- Strong chemical bond to the substrate
- Excellent vapor transmission
- Dries quickly, re-open to traffic in 1-2 hours
- Excellent alkali resistance





## ArmorSheet Commercial/Residential Waterproofing



**Packaging:**

36" x 66.7' (0.91 m x 20.3 m)  
200 sqft (18.5 m2)  
72 lbs (32.7 kg)  
**Each or 25 rolls per pallet**

**ASSM-39600**

ArmorSheet 600 is a premium 60 mil prefabricated self-adhering sheet-type waterproofing membrane. It is comprised of a tough multi-layer cross-laminated film that is coated with a rubberized asphalt adhesive. A release liner protects the adhesive and is removed as the membrane is installed. ArmorSheet 600 is intended as a multi-purpose waterproofing membrane for use in sub-grade applications and under siding, exterior plaster, as a through wall flashing or anywhere it will be protected from long-term ultraviolet exposure. ArmorSheet 600 adheres aggressively to most clean, dry substrates including metal, wood vinyl, masonry, ICF foundations with a film/foil surface, and rigid insulation boards. ArmorSheet 600 may be used to waterproof foundations and other below grade structures, plaza decks, balconies, under siding, and exterior plaster. This premium system bonds to the substrate and self-seals around nails, staples and other fasteners to prevent damage caused by water penetration.

**USES / FEATURES**

Foundation wall, floor and planter waterproofing, under stucco and at head, sill, chimney shoulder, pot shelves, parapets and pony walls. Use for sealing SIPS building panels and around doors, windows and other potential leak areas. Waterproofs ICF foundations that are coated with a film/foil surface, from damage. ArmorSheet 600 offers the contractor and property owner these extra features: Uniform thickness for dependable protection. Self-seals around fasteners including nails, staples and screws. High strength, high elongation, flexible – accommodates expansion and contraction of the substrates Protects ICF foundations and insulation boards from damage during backfill. Outer film surface is compatible with most construction sealants. Eliminates leaks – multiple layers of protection seal out water Rubberized asphalt won't crack or dry. Aggressively adheres – ArmorSheet 600 sticks in cool weather to common building materials for ease of application and to eliminate movement of water under the membrane.



**Packaging:**

36" x 75' (0.91 m x 22.8 m)  
225 sqft (20.9 m2)  
59 lbs (26.7 kg)  
**Each or 25 rolls per pallet**

**ASSM-39400**

ArmorSheet 400 is an all-purpose 40 mil prefabricated self-adhering sheet-type waterproofing membrane. It is comprised of a high-tensile polyester film that is coated with a layer of specially formulated rubberized asphalt adhesive. A release sheet protects the asphalt and is removed as the membrane is installed. ArmorSheet 400 is engineered to be a multi-purpose waterproofing sheet suitable for use under siding and exterior plaster. ArmorSheet 400 adheres aggressively to most clean, dry substrates including metal, wood vinyl and masonry. The special ArmorSheet 400 polymer modified waterproofing compound self-seals around punctures such as nails, screws and staples. This all-purpose system bonds to the substrate and seals around fasteners to help prevent damage caused by water penetration.

**USES / FEATURES**

Uniform thickness for dependable protection. Self-seals around fasteners including nails, staples and screws. Compatible with most construction sealants and primers. Eliminates Leaks – multiple layers of protection seal out water. Rubberized asphalt won't crack or dry. Aggressively adheres to most clean, dry surfaces including metal, wood, vinyl and masonry for ease of application and to eliminate movement of water under the membrane.

### Accessories ArmorSheet

**Armor 700 Solvent-Based Primer - ASBP-70005**

The Mar-flex 700 SB Primer is a solvent based penetration asphalt primer used for the preparation of all types of surfaces previous to the application of sheet membranes and hot or cold asphalt where application temperatures of 20°F or more are present.

It is especially designed for use as a prime coat for concrete, gypsum, masonry, brick and metal surfaces over which waterproofing asphaltic products are to be applied. This solution readily penetrates pores and seals dusty masonry surfaces to provide a firm base for such applications.

All surfaces to be primed must be dry and free from dust, dirt, oil, grease and any other foreign matter.



**Armor 710 Water-Based Primer - AWBP-70105**

The Mar-flex 710 WB Primer is water-based polymer modified primer for self-adhering membranes. The 710 WB Primer penetrates pores and dries fast to provide a tacky, firm substrate for adhesion of the membranes.

The 710 WB Primer is suitable for use over asphalt, wood, plywood, gypsum board and concrete surfaces.

All surfaces to be primed must be dry and free from dust, dirt, oil, grease and any other foreign matter.



**Waterproofing  
and Building  
Products**

### ArmorClay Bentonite Waterproofing

#### ArmorClay 600

##### ACBS-30600

ArmorClay 600 waterproofing membrane combines the thermal stability and high performance of a cross-laminated HDPE sheet with the long-term sealing of bentonite clay. Installation is fast and efficient - bonding tightly to the recommended Spray Adhesive. **NO NAILING IS REQUIRED.** It is non-toxic, fire resistant, and emits no solvents or VOC's. ArmorClay 600 will have unsurpassed life expectancy and provide waterproof protection equal to the life of the structure.



##### Packaging:

39" x 37' (0.99 m x 11.2 m)  
120 sqft (11 m<sup>2</sup>) standard rolls.  
72 lbs (32.7 kg)  
**Each or 25 rolls per pallet**

##### Uses

Waterproofing membrane designed for use on below-grade or split-slab structures. It is excellent for use on poured and ICF foundation walls, tunnels, plaza and parking decks. It is designed for easy installation with ArmorClay Mastic Adhesive depending on the project.

#### ArmorClay 1000

##### ACBS-31000

A multi-layer waterproofing membrane consisting of bentonite, virgin high-density polyethylene, and a protective layer of non-woven polypropylene. The tough HDPE membrane provides the primary waterproofing envelope while the expandable bentonite clay provides the self-sealing reassurance under hydrostatic conditions. The polypropylene fabric protects the bentonite from exposure to inclement weather and direct installation of shotcrete.



##### Packaging:

42" x 21.5' (1.1 m x 6.6 m)  
75 sqft (7 m<sup>2</sup>) standard rolls.  
75 lbs (34 kg)  
**20 rolls per pallet only**

##### Uses

Waterproofing membrane is used on structures below grade and is especially effective where the water-proofing is applied before the walls or floor are poured. ArmorClay 1000 is effective for blindside installation such as lagging, under floors, and elevator pits or standard installations such as backfilled wall, decks/tunnels. It has outstanding performance when used under conditions of high water head pressure.

#### ArmorClay 1500

##### ACBS-31500

The ultimate multi-layered waterproofing system that has bentonite clay on both sides of virgin HDPE membrane and a thin scrim of polypropylene to protect the bentonite from exposure to the elements. This system will form waterproof barriers to both sides of the HDPE. It combines the swelling properties of Bentonite clay with the strength and protection of virgin HDPE sheets to form two layers of self-sealing waterproofing, for the toughest projects even under hydrostatic conditions. Because both Bentonite and the HDPE membrane are very stable, ArmorClay 1500 waterproofing will provide long-lasting protection for your building.



##### Packaging:

42" x 14.3' (1.1 m x 4.4 m)  
50 sqft (4.6 m<sup>2</sup>) standard rolls.  
75 lbs (34 kg)  
**20 rolls per pallet only**

##### Uses

Waterproofing membrane is used on structures below grade and is especially effective where the waterproofing is applied before the walls or floor are poured such as blindside installation lagging, under floors, and elevator pits. It has outstanding performance when used under conditions of high water head pressure. Can be used as a complete system with many Mar-flex Commercial Drainage Boards and Mats as well.

ArmorClay Bentonite Accessories

Accessories  
ArmorClay



**TieBack Cover – ACBS-27278**

The ArmorClay Tieback Cone is a waterproof assembly made from ArmorClay1500, a 20-mil HDPE sheet with bentonite on both sides. The two-piece assembly (cone-shaped cover and a flange cover) is filled with ArmorClay Mastic to complete the waterproofing detail. The Cone is pre-assembled to provide a simple and quick waterproofing detail for tie-backs. The cone shape, flange cover, and mastic fill contribute to form a secure waterproof cover that is strong enough to withstand shotcrete, yet simple enough for field alterations. The ArmorClay Tieback Cone is designed for use with ArmorClay1000 and 1500 waterproofing systems. (Sold Individually)



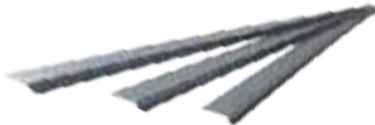
**Granular Pack – ACBS-00030**

Bentonite is volcanic ash that absorbs several times its weight in water, causing it to expand, and thus prevent further water penetration. ArmorClay Granular Packs are 30 lb. bags of premium granular bentonite for use as fill, a cant along horizontal-to vertical transitions, and other loose bentonite applications. The Granular Packs are designed to be more manageable for the applicator on the job site, with handle on the bag to make the bentonite easier to carry and apply. (Sold Individually)



**Waterstop – 1/2"-ACBS-60550 / 3/4"- ACBS-60575**

ArmorClay Waterstop is used to seal static construction joints in concrete footings, walls, floors, tunnels, parking and plaza decks and to prevent water migration. ArmorClay Waterstop has superior performance when used under conditions of extreme water head pressure. Standard rolls sizes are: 1/2" x 1" x 15' (1.27 cm x 2.54 cm x 4.6 m) & 3/4" x 1" x 15' (1.9 cm x 2.54 cm x 4.6 m) (Sold in 5 rolls per box quantities)



**Termination Bar – GM-48280**

Termination bar is a high strength vinyl/plastic strip designed for attaching and sealing ArmorClay membranes and drainage layers at their termination points. Termination bar is 2.5" wide, 6'6" long and edging for caulking and sealing. (Sold 50 per box)



**Bitumen Tape – ACBS - 04100**

ArmorClay Bitumen Tape consists of a 4-mil cross laminated HDPE sheet laminated to 26 mils of Butyl Rubber and release liner. Uses include: Protect seams of multiple ArmorClay waterproofing systems from fluid and vapor transmission. ArmorClay Bitumen tape may be used on all grade line termination. (Sold 6 rolls/case)



**Seam Tape – ACBS-03180**

ArmorClay Seam Tape is PVC-backed rubber-adhesive seam tape to protect the joint on ArmorClay waterproofing membranes. It forms a strong bond (25oz/in) and will simultaneously cover nail holes along the overlap. The tape will provide a contiguous surface after installation. The Seam Tape comes in rolls 3" wide x 36 yards long. (Sold 16 rolls/case)



**Solvent-based Mastic - 2gal pail - ACBS-36202**  
**5gal pail - ACBS-36205**  
Modified Bentonite Paste. (Pails sold individually)



**Water-based Mastic Adhesive – 2gal pail – ACBS-68002**  
**5gal pail – ACBS-68005**

Waterbase acrylic mastic adhesive. (Pails sold Individually)

## ArmorClay Bentonite Waterproofing



**Use ArmorClay with Mar-flex commercial grade waterproofing products for unmatched protection and superior warranties.**

### Why Bentonite?

ArmorClay bentonite products and accessories are a tested and proven solution for commercial waterproofing applications.

Bentonite clay expands when wet, absorbing several times its weight in water and makes for a very stable, below-grade solution.

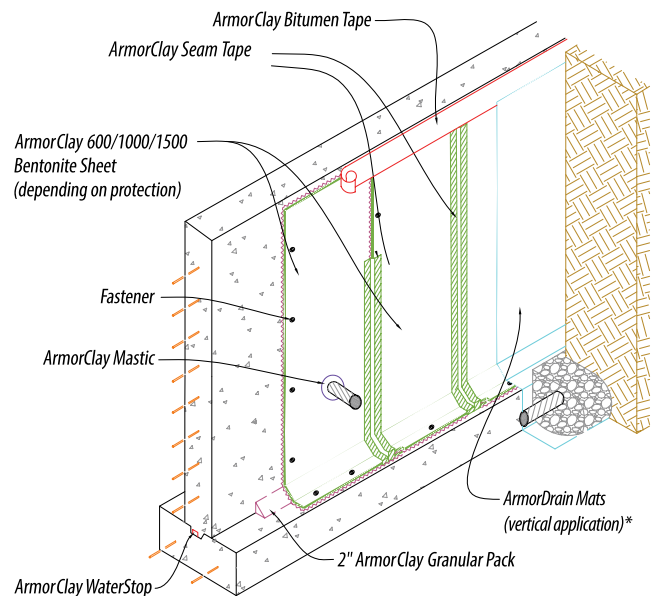


### ADVANTAGES:

- Strong cross-laminated HDPE
- Self-sealing bentonite layer
- Easy installations with ArmorClay Adhesive
- Adhesion to concrete
- Adjustable placement
- Longevity: life of the structure
- No VOC—solvent free

### ArmorClay Products:

- ArmorClay 600
- ArmorClay 1000
- ArmorClay 1500
- ArmorClay Bitumen Tape
- ArmorClay Granular Pack
- ArmorClay Mastic
- ArmorClay Mastic Adhesive
- ArmorClay Seam Tape
- ArmorClay Termination Bar
- ArmorClay Tieback Cone
- ArmorClay WaterStop



*\*For horizontal applications, use "C" Drain 400 Drainage Board*





## TopGun Protection and Drainage Board

**NEW  
PRODUCT**

### TopGun Protection and Drain Board

Mar-flex TopGun Board is a semi-rigid board made from a blend of 70% recycled synthetic fibers; its unique design promotes effective water drainage while still retaining the board's R-Value. Lifetime Residential Warranties available.

The TopGun Board, when installed from the footing to the sill plate, addresses a major source of energy consumption; the conditioned but uninsulated basement and lower levels of a home. It also acts as a drainage medium to channel ground moisture away from the structure's foundation and into the building's drain tile system, while at the same time, protecting the Mar-flex waterproofing membrane, especially during backfilling and other construction activity.



Product Specifications:	Size/Pallet	Pcs./Pallet	Ft. <sup>2</sup> /Pallet	R-Values	Drainage
.75" TopGun Board	.75" x 3' x 4'	64	768	3.1	Up to 74 gal/hr/lin. ft.
1.1875" TopGun Board	1.1875" x 3' x 4'	40	480	5.0	Up to 118 gal/hr/lin. ft.
2.375" TopGun Board	2.375" x 3' x 4'	20	240	10.0	Up to 237 gal/hr/lin. ft.

### .75" TopGun Board

.75" TopGun Board has 64 pieces per pallet that are 3' x 4' with an R-Value of 3.1. Each pallet contains 768 square feet. Sold by the pallet, 64 pallets per truck load.

.75"



DM-48375

### 1.1875" TopGun Board

1.1875" TopGun Board has 40 pieces per pallet that are 3' x 4' with an R-Value of 5.0. Each pallet contains 480 square feet. Sold by the pallet, 64 pallets per truck load. **1.1875"-also available in 4'x8' sheets-DM-48415**

1.1875"



DM-48400

### 2.375" TopGun Board

2.375" TopGun Board has 20 pieces per pallet that are 3' x 4' with an R-Value of 10.0. Each pallet contains 240 square feet. Sold by the pallet, 64 pallets per truck load. **2.375"-also available in 4'x8' sheets-DM-48450**

2.375"



DM-48425



Waterproofing  
and Building  
Products

### ShockWave™ Drainage & Insulation Board



Shockwave is the newest innovation in waterproofing. Designed as a superior drainage board with unsurpassed features that address the needs of applicators, builders and homeowners.

Shockwave is made of environmentally green closed-cell, cross-linked foam. Shockwave protects the wall and membrane during the backfill process with its CRM (crush resistant memory) which allows it to bounce back to its original configuration when compressed. Shockwave effectively channels water away from the foundation walls.



#### NEW PALLET INFORMATION

Product Specifications:	Size/Pc.	Pcs./Pallet	Ft. <sup>2</sup> /Pallet	Drainage
1" Shockwave	1" x 3' x 4'	40	480	50/gal/hr/lin. ft.
2" Shockwave	2" x 3' x 4'	20	240	101/gal/hr/lin. ft.

#### 1" Shockwave

1" Shockwave has 40 pieces per pallet that are 3' x 4'. Each pallet contains 480 square feet.

Sold by the pallet,

64 pallets/truckload.



DM-48325

#### 2" Shockwave

2" Shockwave has 20 pieces per pallet that are 3' x 4'. Each pallet contains 240 square feet.

Sold by the pallet,

64 pallets/truckload.



DM-48350

### GEO-MAT™ Products

#### Mar-flex GEO-MAT™ Products



Mar-flex Geo-Mat rolls are made of high density polyethylene (HDPE) which offers strong resistance to hydrostatic pressure and excellent drainage.

Mar-flex Geo-Mat rolls feature dimples that are aligned along vertical and horizontal axis to rapidly channel water from grade to the footer drainage system.

Geo-Mat or Geo-Mat Plus can be used as a foundation dampproofing as well as a sheet waterproofing material in certain instances. In areas where there is low hydrostatic pressure, for example when a drainage system is installed, the Geo-Mat products can be considered for use as a waterproofing membrane.

Geo-Mat is considered a GREEN product and can be used toward LEEDS building credits.

Mar-flex Geo-Mat accessories are available to professionally complete any job.

Material	Color	Roll Height	Roll Length	Compression Resistance	Drainage Capacity	Rolls/Pallet
Geo-Mat HC	Gray	4', 6'9", & 8'	50'	5515 psf.	18 gal/min/ft	12 Rolls
Geo-Mat Plus	Gray	4', 6', & 8'	50'	5515 psf.	18 gal/min/ft	9 Rolls

#### Mar-flex GEO-MAT™ HC

Mar-flex Geo-Mat HC is a high density, high compression polyethylene drainage roll used for dampproofing and sheet waterproofing. Stud shaped dimples provide an air chamber between roll and wall which keeps wall dry. Mar-flex Geo-Mat HC is resistant to saline solutions, alkalis and acids.

Roll Size: 4', 6'9" & 8' x 50' 200/337.5/400 sq. ft./roll Each or 12/Pallet



GM-48204 – 4'x50'  
GM-48255 – 6.9'x50'  
GM-48260 – 8'x50'



#### Mar-flex GEO-MAT™ Plus

Mar-flex Geo-Mat Plus is a high density polyethylene (HDPE) roll with an attached Tyvar geotextile. Mar-flex Geo-Mat Plus is placed polyethylene side against the waterproofing membrane allowing the filter mat to protect against back fill, soil sediment and obstructions.

Mar-flex Geo-Mat Plus is a protection and drainage roll used in conjunction with Mar-flex's waterproofing membranes to form one of Mar-flex's Waterproofing Systems.

Roll Size: 4', 6' & 8' x 50' 200/300/400 sq. ft./roll Each or 9/Pallet



GM-48274 – 4'x50'  
GM-48272 – 6'x50'  
GM-48270 – 8'x50'



#### Code Compliance

ICC Evaluation Service, Inc. (ICC-ES) has issued evaluation report ESR-3062 on the Mar-flex 5000™, Fusion™ and QuickSeal™ Waterproofing Membranes, Geo-Mat HC™ and Geo-Mat Plus™ Drainage Rolls. ICC-ES finds that, subject to the conditions set forth in ESR-3062, the membranes comply with the International Building Code (IBC) and the International Residential Code (IRC), or are suitable alternatives to what is specified in the codes.



Waterproofing and Building Products

### GEO-MAT™ Products

### Composite Drainage Mats

#### Geo Clip

Geo Clip is designed to be used in conjunction with Mar-flex Geo-Mat and Geo-Mat Plus to speed installation. The Geo Clip's prongs help distribute weight to secure board after nail is inserted into preformed center nail hole.



GM-48277

Generally 80-100 clips used per 8'x 50' foot roll.

500/box

#### Mar-flex Armor Drain 110

Mar-flex Armor Drain 110 is a medium-duty dimpled core bonded to a single layer of non-woven filter fabric. Designed as a residential composite drainage system.



DP-48325

Roll Size: 4'x 50'  
200 sq. ft./roll  
Thickness: .40"



Each or 8/Pallet

#### Termination Bars

Termination bars are designed to be used in conjunction with Mar-flex Geo-Mat & Geo-Mat Plus, or any other sheet products requiring termination bars. The termination bar protects the top edge of the product at grade level from soil penetration between roll and wall.



GM-48280

50 (6'6") Termination bar/box  
325' per box

#### Fasteners

Fastens product to surface, providing an additional bond until backfilled. May be installed into concrete with hammer.

- |        |                    |  |
|--------|--------------------|--|
| 1"     | 500/box – AI-28132 | • Armor Drain 110/150  |
| 1-1/4" | 500/box – AI-28134 | • 3/4" Drain & Dry/FiberDrain<br>Geo-Mat Products<br>ArmorDrain 400          |
| 1-1/2" | 500/box – AI-28136 | • 1-3/16" Drain & Dry/FiberDrain<br>• 1" Shockwave GeoDrain Tile<br>6" & 12" |
| 2-1/2" | 500/box – AI-28138 | • 2-3/8" Drain & Dry/FiberDrain<br>• 2" Shockwave                            |

AI-28132



AI-28134



AI-28136



AI-28138



#### ArmorFlash

ArmorFlash 6" is designed to be used in conjunction with Mar-flex Geo-Mat during dampproofing applications. The ArmorFlash seals overlaps and other critical points on flat side of roll.



CETS-0675

Roll Size: 6" x 75'  
6 rolls/box

Questions?  
Call Mar-flex Today!

**800 498 1411**



### Drain & Dry Board with Ecosse Technology

#### Ecosse Drain & Dry Board™

Ecosse Drain & Dry Boards are made with Ecosse Technology that converts bio-based materials into an inert polymer that bonds mineral wool strands together, eliminating the formaldehyde and phenols found in traditional binders and insulations. The Drain & Dry Board comes in several sizes. These boards offer protection for the waterproofing or dampproofing membrane during backfilling operations, and offer good drainage properties and thermal insulation. Drain & Dry is also LEED accredited.

Ecosse Drain & Dry boards are compatible with any of the Mar-flex waterproofing or dampproofing membranes.

Ecosse Drain & Dry boards should be installed from the top of the footing to the grade line and are applied shortly after membrane application and before backfilling operations start.



Product Specifications:	Size/Bundle	Pcs./Bundle	Ft. <sup>2</sup> /Bundle	R-Values	Drainage
3/4" Drain & Dry Board	3/4" x 3' x 4'	18	216	3.1	Up to 65 gal/hr/lin. ft.
1-3/16" Drain & Dry Board	1-3/16" x 3' x 4'	12	144	5.0	Up to 125 gal/hr/lin. ft.
2-3/8" Drain & Dry Board	2-3/8" x 3' x 4'	6	72	10.0	Up to 190 gal/hr/lin. ft.

#### 3/4" Drain & Dry Board™

3/4" Drain & Dry Board has 18 pieces per bundle that are 3' x 4' with an R-Value of 3.1. Each bundle contains 216 square feet. Sold by the bundle, 232 bundles per truck load.

3/4"



DM-48200

#### 1-3/16" Drain & Dry Board™\*

1-3/16" Drain & Dry Board has 12 pieces per bundle that are 3' x 4' with an R-Value of 5.0. Each bundle contains 144 square feet. Sold by the bundle, 232 bundles per truck load.

**\*Full truckloads only**

1 3/16"



DM-48225

#### 2-3/8" Drain & Dry Board™\*

2-3/8" Drain & Dry Board has 6 pieces per bundle that are 3' x 4' with an R-Value of 10.0. Each bundle contains 72 square feet. Sold by the bundle, 232 bundles per truck load.

**\*Full truckloads only**

2 3/8"



DM-48250



Waterproofing  
and Building  
Products

### Geo Drain 12" Drainage Tile/Accessories

#### Mar-flex Geo Drain Tile 12"

Mar-flex Geo Drain Tile 12" is a three dimensional, high-flow, drainage core that is wrapped with a non-woven filter fabric. It is designed to replace conventional gravel covered pipe drainage around foundation and retaining walls. However, Mar-flex recommends gravel backfill in high silt/clay or sandy areas.

Each or 8/pallet or 7/pallet if LTL  
Roll Size: 12" x 165' Thickness: 1"



DAP-52300



#### 12" End Out Connector

A 12" end out connector is used to make the connection from Mar-flex Geo Drain 12" to a corrugated 4" plastic pipe.

10/box



DAP-52305

#### 12" Side Out Connector

A 12" side out connector is used to make an in line connection of the Mar-flex Geo Drain 12" with a 4" outlet.

10/box



DAP-52310

#### 12" Corner Connector

A 12" corner connector is used to connect two sections of Mar-flex Geo Drain 12" on either an inside or outside corner.

10/box



DAP-52320

#### 12" Splice Connector

A 12" splice connector is used to connect two sections of the Mar-flex Geo Drain 12" either vertically or horizontally.

10/box



DAP-52325



Questions?  
Call Mar-flex Today!  
**800 498 1411**

### Geo Drain 6" Drainage Tile/Accessories

#### Geo Drain 6" Tile

Mar-flex Geo Drain Tile 6" is a three dimensional, high-flow, drainage core that is wrapped with a non-woven filter fabric. It is designed to replace conventional gravel covered pipe drainage around foundation and retaining walls. However, Mar-flex recommends gravel backfill in high silt/clay or sandy areas.

Roll Size: 6" x 165' Thickness: 1"

Each or 16/Pallet or  
15/Pallet if LTL



DAP-52200



#### 6" Splice Connector

A 6" splice connector is used to connect two sections of the Mar-flex Geo Drain 6" either vertically or horizontally.

10/box



DAP-52220

#### 6" End Cap

A 6" end cap is used to cover the cut end of the Mar-flex Geo Drain 6".

10/box



DAP-52225

#### 6" End Out Connector

A 6" end out connector is used to make the connection from the Mar-flex Geo Drain 6" to a corrugated 4" plastic pipe.

10/box



DAP-52205

#### 6" Step-down Connector

A 6" step-down connector is used to connect two sections of Mar-flex Geo Drain 6" on a vertical stepped foundation.

10/box



DAP-52230

#### 6" Side Out Connector

A 6" side out connector is used to make an in line connection of the Mar-flex Geo Drain 6" with a 4" outlet.

10/box



DAP-52210

#### 6" Corner Connector

A 6" corner connector is used to connect two sections of Mar-flex Geo Drain 6" on either an inside or outside corner.

10/box



DAP-52235

# Commercial

## Heavy Duty Horizontal and Vertical Drainage

### Armor Drain

#### **ArmorDrain** 110

##### **Vertical Mat – DP-48325**

ArmorDrain 110 is an impermeable polymeric sheet that while under heat and pressure is formed into a dimpled drainage core. The core is then bonded to a single layer of non-woven filter fabric. The filter fabric retains soil and sand particles as well as freshly placed concrete or grout, allowing water to pass into the drainage core.



##### **Purpose**

ArmorDrain 110 is engineered to provide ample strength to protect waterproofing membranes against back fill soil and sediment and to provide excellent drainage capabilities providing hydrostatic relief.

AD 110 is ideal for basement foundations, retaining walls, planters or bridge abutments.

##### **Advantages**

- 11,000 psf of protection
- Resistance to hydrostatic pressure
- High flow dimpled drainage core
- Protects waterproofing membrane
- Easy installation

#### **ArmorDrain** 150

##### **Horizontal and Vertical Mat – DP-48350**

ArmorDrain 150 is an impermeable polymeric sheet that while under heat and pressure is formed into a dimpled drainage core. The core is then bonded to a single layer of non-woven filter fabric. The filter fabric retains soil and sand particles as well as freshly placed concrete or grout, allowing water to pass into the drainage core.



##### **Purpose**

ArmorDrain 150 is used as a protection and drainage roll and is engineered to provide ample strength to protect membranes against back fill soil and sediment and to provide excellent drainage capabilities.

##### **Advantages**

- 15,000 psf of protection
- Higher compressive strength for greater depth
- Strong resistance to hydrostatic pressure
- High flow dimpled drainage core
- Protects waterproofing membrane
- Easy installation

#### **ArmorDrain** 400

##### **Horizontal Mat – DP-48375**

ArmorDrain 400 is a heavy duty, high density polyethylene geonet drainage core. Its ridges are heat fused to a layer of non-woven filter fabric with an added layer of heavy duty grey fabric bonded to the back.



##### **Purpose**

ArmorDrain 400 is ideal under slabs, planters and roof gardens, retaining walls, foundation walls, and bridge abutments.

Because of the crush proof nature of the geonet, drainage composites can be used in the most extreme cases where heavy loads and/or heavy vehicular traffic are abundant.

##### **Advantages**

- 40,000 psf of protection
- Crush resistant
- Relieves hydrostatic pressure
- HDPE Geonet Drainage Core
- Protects waterproofing membrane
- Easy installation

#### **Accessories** ArmorDrain

**GeoClip** is designed to be used in conjunction with Armor Drain to speed installation. The Geo Clip's prongs help distribute weight to secure board after nail is inserted into preformed center nail hole.

GM-48277

500/box



**Termination bars** are designed to be used in conjunction with ArmorDrain. The termination bar protects the top edge of the product at grade level from soil penetration between roll and wall.

GM-48280

50 (6'6") Termination bar/box





**SlateWell/DuraWells Egress Window Wells**

**SLATEWELLS DISCONTINUED 4/22**

**SLATEWELL**

EGRESS WINDOW WELLS AND ACCESSORIES

SlateWell Egress Window Wells are designed to meet building code requirements for below grade living spaces and are fabricated with a simulated slate texture that looks and feels like real slate.

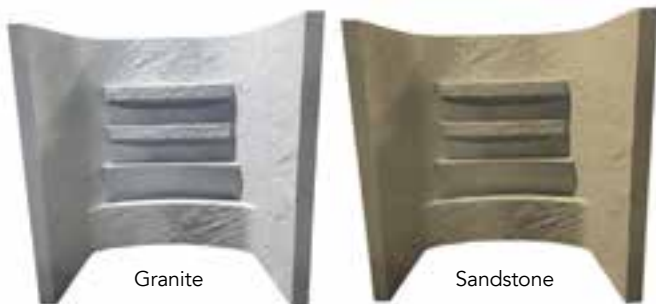
They come in two designer colors to coordinate with other Mar-flex window wells.

Part No.	Height	Inside		Weight
		Width	Projection	
WW-48160/Granite	60"	56"	41"	96lbs.
WW-48060/Sandstone				
WW-48172/Granite	72"	56"	41"	112lbs.
WW-48072/Sandstone				

\*Installation hardware kit Part #WW-44180 (\*Sold Separately)  
\*Must be used to validate warranty

**KEY FEATURES**

- Ease of escape/entry - Protruding Steps
- Durability - Well thickness superior to other brands
- Aesthetic - Realistic look of slate



Granite

Sandstone

**Optional Cover and Grate also available:**

Clear Cover



WW-48000

Rebar Grate



WW-48002 - Bronze  
WW-48004 - Gray

**DURAWELLS**

EGRESS WINDOW WELLS AND ACCESSORIES

DuraWell's one-piece design keeps your window well safe from the elements. No need to worry about rust or rot, it will withstand it all. Resembles real stone and fills your basement with natural light. DuraWell utilizes a built-in ladder and steps to promote safe and easy emergency exit. It is engineered with strong, lightweight materials to make installation easier than ever.

Part No.	Height	Inside		Weight
		Width	Projection	
WW-45048/Sandstone	48"	70"	40"	55lbs.
WW-45148/Slate				
WW-45060/Sandstone	60"	70"	40"	65lbs.
WW-45160/Slate				
WW-45072/Sandstone	72"	70"	40"	75lbs.
WW-45172/Slate				

\*Installation hardware kit Part #WW-44180 (\*Sold Separately)  
\*Must be used to validate warranty

**KEY FEATURES**

- Safe: Egress Code Compliant
- Built-in steps every 12"
- Durable: No Rust, Rot or Deterioration
- Appealing: Real Stone Appearance
- Easy Installation: Strong, Light-Weight Material, One Piece Design
- Available in 2 colors: Sandstone and Slate

Available in 3 Heights from 48" to 72"

36", 84" and 96" available by special order only



**Optional Cover and Grate also available:**

Clear Cover



WW-45000

Rebar Grate



WW-45002 - Bronze  
WW-45004 - Gray



**Waterproofing and Building Products**

# Residential

## Egress Window Wells

### Stonewells Stone Textured Egress Window Wells



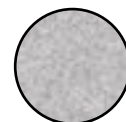
Mar-flex Stonewells™ are fitted with a simulated rock texture that looks and feels like real stone at a fraction of the cost. The built-in steps provide easy egress in case of a life threatening emergency.

75" Width x 49½" Projection at top x 64½" Height  
66" Inside Width, 34" Inside Projection at bottom

- Fine stone texture
- Provides escape with built-in steps
- Meets building codes for below-grade living space egress
- Let in more natural light
- Accommodates 3-5' casement or slider windows
- One piece unit, no assembly required
- Dual wall design offers higher backfill rating
- Won't rust or dent like metal
- Enhances your homes value
- Optional Polycarbonate cover eliminates weeds, pests, and rainwater
- Maintenance Free
- Comes in two designer colors to coordinate with Mar-flex RhinoWells™

\*Installation hardware kit  
Part #WW-44180 (\*Sold Separately)  
\*Must be used to validate warranty

Each or 6/Pallet



Speckled Granite



Speckled Sandstone



WW-44430



WW-44440

Back View

### Egress Window Well Accessories

#### Stonewells Cover

Clear window well cover designed to fit Mar-flex Stonewells™ window wells.



WW-44450

#### RhinoWells Egress Window Well Cover

Egress clear covers are designed to fit all RhinoWells.

WW-44170



#### RhinoWells Steel Egress Window Well Rebar Grate

Steel Egress Window Well Rebar Grate easily secures to the top of the RhinoWells. Primer gray color to blend with well color.

WW-44176



### Landscapes™ No-Maintenance Standard Window Wells



**DISCONTINUED 10-2022..call for remaining stock levels.**

Mar-flex Landscapes™ No-Maintenance Window Wells take lower level living to the next level with features designed to brighten your basement and increase the curb appeal of your home.

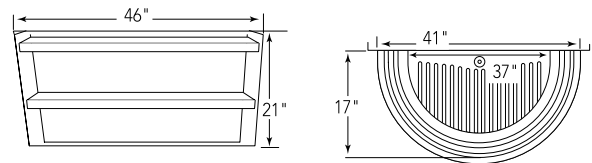
- Won't rust or dent like metal
- Features a built-in floor for maintenance-free construction
- Install easily - no specialty hardware needed
- Includes a drain kit

#### Landscapes™ well (Small)

46" Width x 17" Projection x 21" Height

Includes drain kit. Standard fasteners may be used for window well installation; no specialty hardware required.  
 Inside Width at Top: 41"  
 Inside Width at Bottom: 37"

Each or 25/Pallet



Sandstone – WW-42056

Granite – WW-42058

#### Landscapes™ well cover (Small)

Clear window well cover designed to fit Landscapes™ Window Well (Small).

Each or 4/box



WW-42140

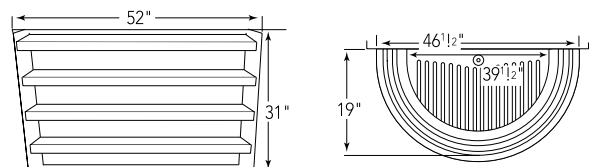
#### Landscapes™ well (Large)

52" Width x 19" Projection x 31" Height

Includes drain kit. Standard fasteners may be used for window well installation; no specialty hardware required.

Inside Width at Top: 46-1/2"  
 Inside Width at Bottom: 39-1/2"

Each or 20/Pallet



Sandstone – WW-42110

Granite – WW-42115

#### Landscapes™ well cover (Large)

Clear window well cover designed to fit Landscapes™ No-Maintenance Window Well (Large).

Each or 3/box

WW-42145



# Concrete Products

## Control-Joint Systems/Foundation Vents

### Mar-flex Control-Joint Systems/Foundation Vents



The **Mar-flex Control-Joint System** is designed to eliminate "Random Shrinkage Cracks" by creating vertical control-joints on both sides of the foundation walls. To ensure further protection, a watertight, outside control-joint is created when filled with Mar-flex Waterstop Elastomeric Sealant and protected by Mar-flex Fiberglass Fabric Reinforcement. Residential basements require foundation walls that are watertight and waterproofed. The Mar-flex Control-Joint System provides an economical, easy to use system for eliminating "Random Shrinkage Cracks" which are generally unavoidable, uncontrollable, unsightly and will leak water if not planned for ahead of time.



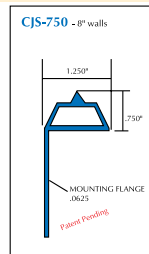
- Isolates shrinkage cracking and eliminates "Random Shrinkage Cracking"
- Reusable plastic extrusion, which easily attaches to the edge of any concrete forming system
- Installed in pre-planned locations in the foundation wall
- The "V" point creates "inducement" for shrinkage cracking in a vertical line
- Available in 4' and 5' lengths, with 2" mounting flange
- Pre-punched for easy use with different brands of forms

#### CJS-750 Control-Joint Extrusion

.750" Height for 8" wall thickness. 2" mounting flange. Includes 13 splice connectors.

25/box

CJS-42140 4' – 2" Flange  
CJS-42150 5' – 2" Flange

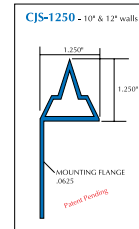


#### CJS-1250 Control-Joint Extrusion

1.250" Height for 10" and 12" wall thickness. 2" mounting flange. Includes 13 splice connectors.

25/box

CJS-42340 4' – 2" Flange  
CJS-42350 5' – 2" Flange



Welcome to the future of foundation ventilation – and possibly the last vent you will ever need.

#### VORTEX Manual Vent

Vent features easy-to-access controls that allow user to adjust airflow. Adjusts from 7.5 to 10 inches and fits 8, 9 and 10 inch walls, nominal or full size.

Dimensions: 19-1/4" W x 11-1/4" H  
Clear Vent Area-(CVA) 31.4 -Screen included.

Each or  
60/Pallet



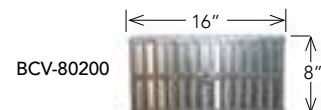
BCV-80150



- Adjustable and telescopic for maximum versatility
- Less SKU/inventory headaches
- High-density polyethylene construction

#### Replacement Manual Vent Screen

Replacement manual screen fits BCV-80150



BCV-80200



### Crack Injection & Foundation Repair Kits

#### 30' Refillable Contractor Crack Injection Start Up Kit

Start-up kit provides basic materials and supplies for repair of cracks of approximately 30 lineal feet.

**Kit Contents:**

- IAT-64114 - Dual Cartridge Crack Injection Gun (1)
- IA-68160 - Quick Set Surface Port Paste (3)
- IA-68100 - Quick Foam Fine (3)
- IA-68168 - Quick Set Urethane Adhesive (1)
- IA-68180 - Static Mixers (3)
- IA-68210 - Retaining Nuts (3)
- IA-68280 - Universal Surface/Corner Mounts (50)
- IA-68220 - Quick Hose Injection Assembly (4) Safety Goggles (1) Gloves (5 Pair) Plastic Trowel (1) Wire Brush (1) Tool Box (1)



IAT-64100

#### Single Use Crack Repair Kit (Polyurethane/Epoxy)

The Polyurethane kit includes the materials and accessories for low-pressure injection and repair of approximately 6-8 lineal feet. (Up to 6' for the Epoxy kit)

- Mar-flex Port Paste (1 jar 8oz. Part A, 1 jar 8oz. Part B)
- Wooden Sticks (2) Surface Ports and Caps (12)
- Mar-flex Injection Polyurethane/Epoxy Resin 1:1 (2 single cartridges) 3/8":24 Mixing Nozzles (2) Injection Hose Assembly with plastic shut-off valve (1) Latex Gloves (2 Pair)
- Plastic Trowel (1) Goggles (1)
- Wire Brush (1) Drop Cloth (1)
- Tool required: Standard Single Cartridge Caulking Gun



IAT-64250 Polyurethane Repair Kit - 6' to 8'  
\*IAT-64255 Epoxy Repair Kit - up to 6'  
\*Special Order Only

#### Stitch Kit - Single/Triple

Mar-flex Grids (Stitch Kits) are a pre-impregnated, bidirectional carbon fiber grid for use as a near surface reinforcement for crack stitching and strengthening of concrete foundation structures. The grids are installed using Mar-flex resin to form a carbon fiber reinforced polymer system.

**Uses**

- Structural Retrofit & Upgrades
- Crack reinforcement & strengthening (increasing service life)
- Use on concrete foundation walls and floors

**The Single | Stitch Kit includes:**

- (10) Carbon fiber stitches
- (1) Tubeset of hi-mod gel
- (2) Green sulzer mixers

**The Triple | Stitch Kit includes:**

- (30) Carbon fiber stitches
- (3) Tubeset of hi-mod gel
- (6) Green sulzer mixers

\*Dual Cartridge Gun Required.

The Single - Stitch Kit is designed to reinforce up to 10' of lineal crack. **IA-68166**

The Triple - Stitch Kit is designed to reinforce up to 30' of lineal crack.



IA-68167



Waterproofing and Building Products

# Concrete Repair

## Crack Injection Urethanes & Injection Epoxies

### Urethanes

#### Quick Foam Fine Urethane (2 Part)

Quick Foam Fine is a hydrophobic polyurethane liquid with a 600 cps. Designed for water infiltration or ex-filtration. Cartridges contain product and catalyst that once introduced to water, reacts forming a closed cell barrier that prevents water infiltration. Designed to be used on cracks that are hairline and larger.

6 (1:1 cartridges)/box  
Mixing nozzle IA-68180, and retaining nut IA-68210 recommended



IA-68100

#### Quick Foam Broad Urethane (1 Part)

Quick Foam Broad is a hydrophilic polyurethane liquid with a 100 cps. Designed for water infiltration or ex-filtration. The dual cartridge comes with one side empty. Water is placed in the empty side and then when mixed with water, the product reacts within 30 seconds, creating a closed cell-barrier that prevents water infiltration. Best suited for cracks that are 1/8" or wider which are actively leaking.

6 (1:0 cartridges)/box  
Mixing nozzle IA-68180, and retaining nut IA-68210 recommended



IA-68120

### Port Paste/Epoxies

#### Quick Set Surface Port Paste

Quick Set Surface Port Paste is a 2 component smooth epoxy adhesive designed to seal the surface of a crack and to attach ports to masonry surfaces.  
6 (1:1 cartridges)/box



IA-68160

#### Quick Set Surface Seal & Peel

Quick Set Surface Seal & Peel is a two component, solvent free, paste adhesive. It is used as a fast-curing removable surface sealer and to attach ports in epoxy and urethane foam crack repair. Cured product does not require sanding or grinding for removal from the wall.  
6 (1:1 cartridges)/box



IA-68165

#### Low Viscosity Epoxy Crack Filler

Low viscosity & moisture insensitivity makes this an excellent product for the injection of dry or damp cracks. With a 200 cps it is designed for cracks that are hairline and larger.  
8 (2:1 cartridges)/box  
Mixing nozzle IA-68190, and retaining nut IA-68210 recommended



IA-68140

#### \*Anchor Epoxy

High strength, fast setting, 2-component epoxy adhesive. 100% solids. Ideal for anchoring bolts, dowels and reinforcing rebar in concrete.  
12 (1:1 cartridges)/box  
12 static mixing nozzles and retaining nuts included.



\*IA-68170

#### \*Special Order Only

Questions?  
Call Mar-flex Today!  
**800 498 1411**

### Injection Ports & Accessories

#### Universal Surface/Corner Mounts

Mounts are designed for surface/corner mounted low pressure crack injection. Surface/corner ports are suitable for both epoxy and urethane materials. Flush mounts to both flat and corner concrete surfaces.



250/box

IA-68280

#### 1/4" : 24 Quick Mix Static Mixer

Static mixers designed to be used with cartridge systems. Recommended to be used with Quick Foam Fine (IA-68100), Quick Foam Broad (IA-68120)

24/box



IA-68180

#### 1/4" : 32 Quick Mix Static Mixer

Static mixers designed to be used with cartridge systems. Recommended to be used with Low Viscosity Epoxy Crack Filler (IA-68140).

24/box



IA-68190

#### Retaining Nuts

Threaded nuts to hold mixing nozzle onto dual cartridge during crack injection process.



10/bag

IA-68210

#### Flexible Quick Hose Injection Assembly

Flexible hose assembly to get to those hard to reach injection ports. One end connects to mixing nozzle, other end attaches to port. Can be used with either epoxy or urethane materials.

10/box

IA-68220



#### Low-Pressure Drill-In Port

Designed to be used on hairline and actively leaking cracks. Suitable for use with static mixers. Length is 3-3/4". Requires a 5/8" diameter drilled hole. Internal ball bearing prevents back-flow of material during injection.

100/bag



IA-68230

#### Dual Cartridge Crack Injection Gun

Easy front loading with rear tube seals to prevent leaking. Kit included to convert gun from 1:1 to 2:1 applications.

IAT-64114



#### Putty Knives

1-1/2" plastic, disposable putty knives. Ideal for hand mixing and applying surface port paste.

25/box

IAT-64210



#### Stir Dish

Clear stir dishes, suitable for mixing surface port paste.

200/box

IAT-64215



#### Wall Preparation Brush

Composite handle wire brush removes loose and scaled material from both smooth and rough masonry surfaces.

IAT-64225



#### Hypo-Allergenic Gloves

Ambidextrous, disposable latex gloves ideal for use with Crack Injection materials. 6 mil Nitrile

100 pieces/box

IAT-64240



Waterproofing and Building Products

# Equipment

## Spray Guns/Accessories

### Spray Guns/Accessories

#### Titan RX-Apex Spray Gun

Titan RX-Apex High Pressure Airless Spray Gun with working pressure of 5000psi and built in swivel.

SA-08020



#### Pump Lubricant

Lubrication for center shaft piston for all spray equipment & 1:1 Fast Flo® pump. Helps to prevent material from adhering to the pump piston rod.

8 oz. bottle



MI-12350

#### High-Pressure Hose Reel Swivel

Connects hose to electric hose reel to prevent kinks in hose; swivels 360°.



MI-12420

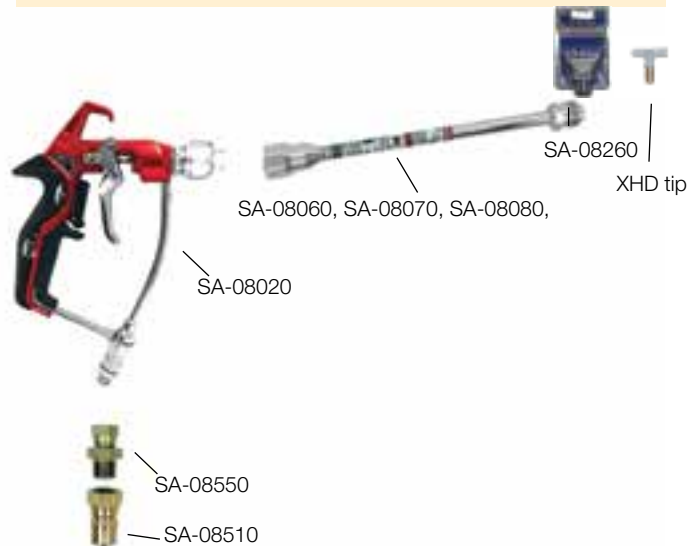
#### Spray Wand/RAC Housing & Tip



#### Spray Gun Set-Up with Standard Swivel



#### Spray Gun/Extension





### Spray Accessories

#### Spray Gun Set up with a "Z" Swivel



#### Gun Wand Extension 10"

An industry standard, extension designed to be used in conjunction with spray guns and Reverse-A-Clean™ housing and tips.



SA-08060

#### Gun Wand Extension 40"

An industry standard, extension designed to be used in conjunction with spray guns and Reverse-A-Clean™ housing and tips.



SA-08070

#### High Pressure Spray Wand 86"

Custom applicator wand designed for ease of application of waterproofing products. High pressure wand with ball valve release. Accepts a variety of tips for different viscosity materials. Made to use with Reverse-A-Clean™ housing and tip which are not included.



SA-08050

#### Gun Wand Extension 60"

An industry standard, extension designed to be used in conjunction with spray guns and Reverse-A-Clean™ housing and tips.



SA-08080

#### 78" Wand Grip and Tube

This 78" wand is the replacement tube for the 86" high-pressure spray wand.



SA-08055

#### Angle Spray Nozzle Kit

Used on the 40" & 60" wand extensions and 86" high-pressure spray wand. Allows for 180° travel of spray tip, use in conjunction with the Reverse-A-Clean™ housing and tip.



SA-08085

### Spray Accessories

#### Graco XHD Reverse-A-Clean™ Housing

Heavy-duty Reverse-A-Clean™ air-less spray tip housing assembly. Fits standard Reverse-A-Clean™ tips and standard spray gun fittings.



SA-08260

#### Graco XHD Tip/Housing Seal Kit

Replacement seals for XHD tip and Guard.

(5)/pack

SA-08263



#### Graco XHD Heavy-Duty Reverse-A-Clean™ Air-less Spray Tip

The first number indicates the pattern width. This number is then doubled indicating the width of the spray pattern when held 12" away from wall. The second set of numbers indicates the orifice diameter. This number determines the rate of atomization, which can affect drying times and coverage rates.

- SA-08273 XHD Reverse-A-Clean Tip #631
- SA-08275 XHD Reverse-A-Clean Tip #635
- SA-08279 XHD Reverse-A-Clean Tip #639
- SA-08282 XHD Reverse-A-Clean Tip #727
- SA-08283 XHD Reverse-A-Clean Tip #731
- SA-08285 XHD Reverse-A-Clean Tip #735
- SA-08287 XHD Reverse-A-Clean Tip #739



Contains 1 tip and 1 seal

- Water-based Tip Recommendations:**
- Tip #631-635, #731, #735 - Mar-flex 5000 WB or QuickSeal WB
  - Tip #727, #731 - Dampproofing WB

- Solvent-based Tip Recommendations:**
- Tip #635, #735 - Mar-flex 5000 SB or QuickSeal SB
  - Tip #727, #731 - Dampproofing SB



### Spray Accessories

#### Spray Gun Swivel

Swivel designed for convenience and comfort of applicator. Alleviates kinks in hoses. Female end fits standard spray gun.

SA-08300



#### "Z" Spray Gun Swivel

"Z" spray gun swivel designed for ease of application and comfort of applicator's wrist and arms. Alleviates kinks in hoses by rotating 360° both horizontally and vertically.

SA-08310



#### Spray Wand Adapter

Spray wand tip adapter with a 7/8" thread.

Used to convert the 86" spray wand for use with a Reverse-A-Clean™ housing and spray tip.

SA-08320



#### 3/8" High-Pressure Ball Valve

SA-08340 3/8" female pipe thread.

SA-08340



### Spray Hoses

#### 3/8" X 25' Hose

Replacement hose for Mar-flex spray equipment excluding the Hydra M 4000.

3/8" inside diameter by 25' high-pressure airless hose with 1/2" male JIC to 3/8" male pipe.



SA-08400

#### 3/8" X 25' Hose with Insulation and Abrasion Sleeve

Replacement hose for Mar-flex spray equipment excluding the Hydra M 4000.

3/8" inside diameter by 25' high-pressure airless hose with 1/2" male JIC to 3/8" male pipe, insulation and protective abrasion sleeve.



SA-08410

#### 3/8" X 50' Hose

Replacement hose for Mar-flex spray equipment excluding the Hydra M 4000. 3/8" inside diameter by 50' high-pressure airless extension hose with 3/8" male and female quick disconnects.



SA-08420

# Equipment

## Spray Hoses

### Spray Hoses

#### 1/2" X 125' Hose

Replacement hose for Mar-flex spray equipment excluding the Hydra M 4000. 1/2" inside diameter by 125' high-pressure airless hose with 1/2" male pipe to 1/2" female JIC.



SA-08440

#### Hose Insulation

150' of hose insulation. Helps maintain proper temperature of product. Fits all of our spray hoses available from Mar-flex, use in conjunction with abrasion sleeve.



SA-08460

#### 1/2" X 125' Hose with Insulation and Abrasion Sleeve

Replacement hose for Mar-flex spray equipment excluding the Hydra M 4000. 1/2" inside diameter by 125' high-pressure airless hose with 1/2" male pipe to 1/2" female JIC, insulation and protective abrasion sleeve.



SA-08450

#### Abrasion Sleeve

250' of abrasion sleeve. Use in conjunction with hose insulation, protects hose from job site damage.



SA-08470



### Spray Hoses

#### **3/8" X 50' Hose with Insulation and Abrasion Sleeve**

Replacement hose for Mar-flex spray equipment excluding the Hydra M 4000. 3/8" inside diameter by 50' high-pressure airless extension hose with 3/8" male and female quick disconnects, insulation and protective abrasion sleeve.



SA-08430

### Hydra M 4000 Hoses

#### **3/8" X 25' Hose with Insulation and Abrasion Sleeve - High-Pressure**

Hydra M 4000 replacement hose. 3/8" inside diameter by 25' 5,000 psi airless hose with 1/2" male JIC to 1/2" male pipe, insulation and protective abrasion sleeve. Designed to be used with Hydra M 4000.



SA-08415

#### **1/2" X 125' Hose with Insulation and Abrasion Sleeve - High-Pressure**

Hydra M 4000 replacement hose. 1/2" inside diameter by 125' 5,000 psi airless hose with 1/2" male pipe to 1/2" female JIC, insulation and protective abrasion sleeve. Designed to be used with the Hydra M 4000.



SA-08455

### Spray Hose Connectors

#### Quick Disconnect Female

Quick disconnect female to be used in conjunction with quick disconnect male.

SA-08500 3/8"  
SA-08520 3/4"



SA-08500 SA-08520

#### 3/8" Male Pipe to 3/8" Male Pipe Connector

Connects 3/8" quick disconnect male to 3/8" ball valve.



SA-08555

#### Quick Disconnect Male

Quick disconnect male to be used in conjunction with quick disconnect female.

SA-08510 3/8"  
SA-08530 3/4"



SA-08510 SA-08530

#### 1/4" Female Pipe to 3/8" Male Pipe

Connects 1/4" end of 86" spray wand to 3/8" ball valve.



SA-08565

#### Female JIC to Male Pipe Connector

Connects spray gun swivel to standard spray gun.

1/4" Female JIC to 3/8" Male Pipe



SA-08550



Questions?  
Call Mar-flex Today!

**800 498 1411**

### Material Handling

#### Maintenance Items

##### Complete Transfer Pump Utilizing Parts

- 1:1 Transfer Pump MH-16200
- 3/4" Quick Disconnect Female SA-08520
- 24" Transfer Pump Hose MI-12520



##### GRACO 1:1 FAST FLO® Pump Air Rebuild Kit

Rebuild kit for air motor unit. Includes seals and gaskets.

MI-12500



##### SpeeFlo® S5 Spray Gun Repair Kit

Designed for repairing spray gun when seepage of material occurs and springs are weakened. Tungsten carbide ball valve and seat replacement.

MI-12620



##### GRACO 1:1 FAST FLO® Transfer Pump Lower- Rebuild Kit

Rebuild kit for lower unit. Includes seals and gaskets.

MI-12510



##### SpeeFlo® S5 Spray Gun Repack Tool

Assists in installing gun repair kit (MI-12620). Sleeve protects packings on needle, allowing seals to slide in.

MI-12625



##### 55 Gallon Drum Band Heater

120V, 3" wide heater that wraps around a 55 gallon metal drum, includes a 6' three prong power cord and a built-in thermostat with temperature range settings of 50° to 400° F.



MH-16310

##### Heavy-Duty Drum Heater

120V metal drum band heater. Equipped with two thermostat ranges that include three wattage settings, a spring loaded toggle clamp to snugly fit drum, and a 6' power cord with a three prong plug for grounded electrical operation.

MH-16320



##### 55 Gallon Drum Blanket

Designed to maintain heat during transport to jobsite. Recommended for Water-based and Solvent-based products.

MH-16325



### Safety & Protective Equipment

#### Hooded Coverall

Hooded coverall, durable, breathable protection with elastic arm and leg bands.

25/box

S/PE-56150L (Large)  
S/PE-56150XL (Extra Large)  
S/PE-56150XXL (Extra-Extra Large)



#### Shoe Covers

One size fits most, slips easily over shoes. Prevents tracking of material onto clean floors. Excellent for crack repair.

50/box

S/PE-56175



#### Particulate Respirators

Particulate respirator is NIOSH certified under CFR84 regulation to have filter efficiency level of 95% or greater against particulate aerosols free of oil. Up to 10X PEL. Exhale valve lets workers breath easy and stay cool.

10/box



S/PE-56400



#### Double Dipped PVC Gloves

Double dipped PVC gloves provide protection from solvents, resins, paints and dyes.

12 pair/pack



S/PE-56300

#### PVC Gloves

Inexpensive, multi-use, general purpose utility gloves with full plastic coating over the entire palm providing enhanced protection and longer wear.

12 pair/pack.

S/PE-56305



### Applicator Items

#### Wet Mil Gauge

Standard measuring tool for gauging proper thickness of spray-applied membranes.

10/pack

AI-28110



#### BreakAway Knives

Disposable knives, great for cutting drainage board. Just BreakAway blade as needed to obtain a new cutting edge.

25/box

AI-28130



Safety & Protective Equipment

Complete respirator utilizing parts 8000 Respirator Face Piece S/PE-56410, Organic Vapor Cartridge S/PE-56415, P-100 Particulate Filter S/PE-56420 and Hepa Piggy Back Adaptor S/PE-56425.



P-100 Particulate Filter

P-100 particulate filter protects against dusts, fumes, mists, radio nuclides, radon daughters and asbestos containing dusts and mists.

5 pair/box



8000 Respirator Face Piece

Soft, durable half face piece conforms to the contour of your face.



Hepa Piggy Back Adaptor

Hepa piggy back adaptor.

5 pair/box



Organic Vapor Cartridge

Organic vapor cartridge.

5 pair/box



Questions? Call Mar-flex Today! 800 498 1411





# Freight Information/Credit Terms/Return Policy

## Order / Freight Information

Regardless of order size, we will always locate the best shipping terms to meet your timing and delivery requirements. You may use your own delivery service as well. Just notify our shipping department for details.

Mar-flex uses various shipping methods to best serve your transportation needs.

### Credit Terms & Conditions

Credit Terms are Net 30 subject to approval (unless otherwise noted). Any amount remaining unpaid after such date will incur a service charge of 1.5% (monthly) on the unpaid balance, until paid in full, plus any and all collections costs and attorney fees incurred to collect unpaid balances.

Sales and/or use taxes will be collected where applicable to current tax regulations. The collection of sales and/or use taxes is subject to change in order to comply with state regulations. All orders are subject to acceptance.

Every effort has been made to ensure the accuracy of the information contained in this catalog. Because of our constant efforts to offer the very best products, we reserve the right to change product specifications and/or prices without notice.

**All credit card transactions, including payments on accounts, will incur a 3% service charge.**

### Return Policy

We will normally accept returned products under the following conditions:

- Prior written authorization including RGA number from Mar-flex Waterproofing Products is obtained.
- Products must be returned within 30 days from the original date of the invoice.
- Products must be in new and saleable condition.
- Products must be normal stock for us (not special or custom order).
- A 25% restocking fee plus return freight costs will be deducted from any credit.
- Returns are not accepted on electrical replacement parts.

**F.O.B. Carlisle, Ohio 45005**



Questions?  
Call Mar-flex Today!

**800 498 1411**

# ORDER FORM

**COPY and FAX or EMAIL to**  
 FAX: 513-422-7282 or email: info@mar-flex.com

**OR CALL TOLL FREE 1-800-498-1411**

Office Hours: Monday-Friday 8:00 a.m. - 5:00 p.m. E.S.T.  
 Shipping/Receiving Hours: Monday-Friday 8:00 a.m. - 4:00 p.m. E.S.T.

1. SOLD TO:	2. SHIP TO: (If different than #1)
Company Name:	Company Name:
Street Address:	Street Address:
City/State/Zip:	City/State/Zip:
Phone:	Phone:
Buyers Name/Title:	

Quantity	Item #	Item Description	Unit Price	Total Price

**SHIPPING POLICY**

Your order is shipped from the nearest Mar-flex location or dealer. However, should your order exceed size or weight limits, "Common Carrier" (LTL) will be selected and generally has a 48hr turnaround. Back ordered items to ship F.O.B. from origin at customer's expense.

**RUSH SHIPMENTS/SPECIAL INSTRUCTIONS**

Please request Next Day Air, 2nd or 3rd Day, preferred truck line, or special instructions. We will promptly take care of your needs.

**CREDIT TERMS & CONDITIONS**

Credit Terms are net 30 subject to approval (unless otherwise noted). Any amount remaining unpaid after such date will incur a service charge of 1.5% (monthly) on the unpaid balance, until paid in full, plus any & all collection costs & attorney fees incurred to collect unpaid balances.

Sales and/or use taxes will be collected where applicable to current tax regulations. The collection of sales and/or use taxes is subject to change in order to comply with state regulations. All orders are subject to acceptance.

Every effort has been made to ensure the accuracy of the information contained in the Mar-flex catalog. However, because of our constant efforts to offer you the very best products we must reserve the right to change product specifications & prices without notice.

F.O.B. Carlisle, Ohio 45005

Subtotal		
Tax		
Shipping		Call for options & amounts
Total Amount		

## Return Policy

- We will normally accept returned products under the following conditions:
- Prior written authorization including RGA number from Mar-flex is obtained
  - The products are returned within 30 days from the original date of the invoice
  - The products are in new & saleable condition
  - The products are normal stock for us (not special or custom order)
  - A 25% restocking fee plus freight will be added on all returns
  - Returns not accepted on electrical replacement parts.

Mar-flex uses a variety of shipping methods to best suit your transportation needs.



Waterproofing and Building Products



## Mar-flex offers the best waterproofing products in the industry.

### Mar-flex® Waterproofing & Building Products

We are a USA family-owned innovative manufacturer of residential and commercial foundation waterproofing, air barriers and related basement products. We offer unsurpassed quality and reliability with time tested solutions for the building industry.

### Everything you need to do the job right

Mar-flex goes the extra step to help you from start to finish with an array of products and accessories, egress and non-egress window wells, perimeter drainage, telescopic vents and control-joints. Architects and Contractors alike can rely on Mar-flex for:

- Industry leading warranties
- Hands-on training right in your area
- Job site support
- Sales support to help your market
- LEED certifications
- Specifications and CAD details, available at Mar-flex.com

### Mar-flex guarantee

Mar-flex guarantees quality and versatility — delivering solutions that go above and beyond what you would normally expect. Mar-flex offers a full range of products to perform the job from start to finish. All Mar-flex products are backed by warranties because we stand behind our manufacturing process.

### Complete waterproofing systems

Mar-flex has set the industry standard for offering superior water-based and solvent-based waterproofing membranes, an extensive “green” product assortment, and a wide range of drainage and insulation boards to complete the job based on your markets’ needs.



Printed on recycled paper

## Try the complete line of Mar-flex Residential and Commercial products:

**Foundation Waterproofing Products | Foundation Products | Concrete Repair  
Concrete Anchor Epoxies | Drainage Boards | Egress Window Wells | Standard Window Wells  
Sealers/Mastics | Control Joint Systems | Vortex Vents | Contractor Supplies**

**Order Today! Contact Mar-flex for the dealer nearest you.** 800-498-1411 | 513-422-7285 | Fax 513-422-7282 | Mar-flex.com